



# CCRC Legislative Guide: Maps and District Investments



Do you know a parent in need of child care? A family of four earning \$7,900/mo may qualify. Scan the QR code for more information.



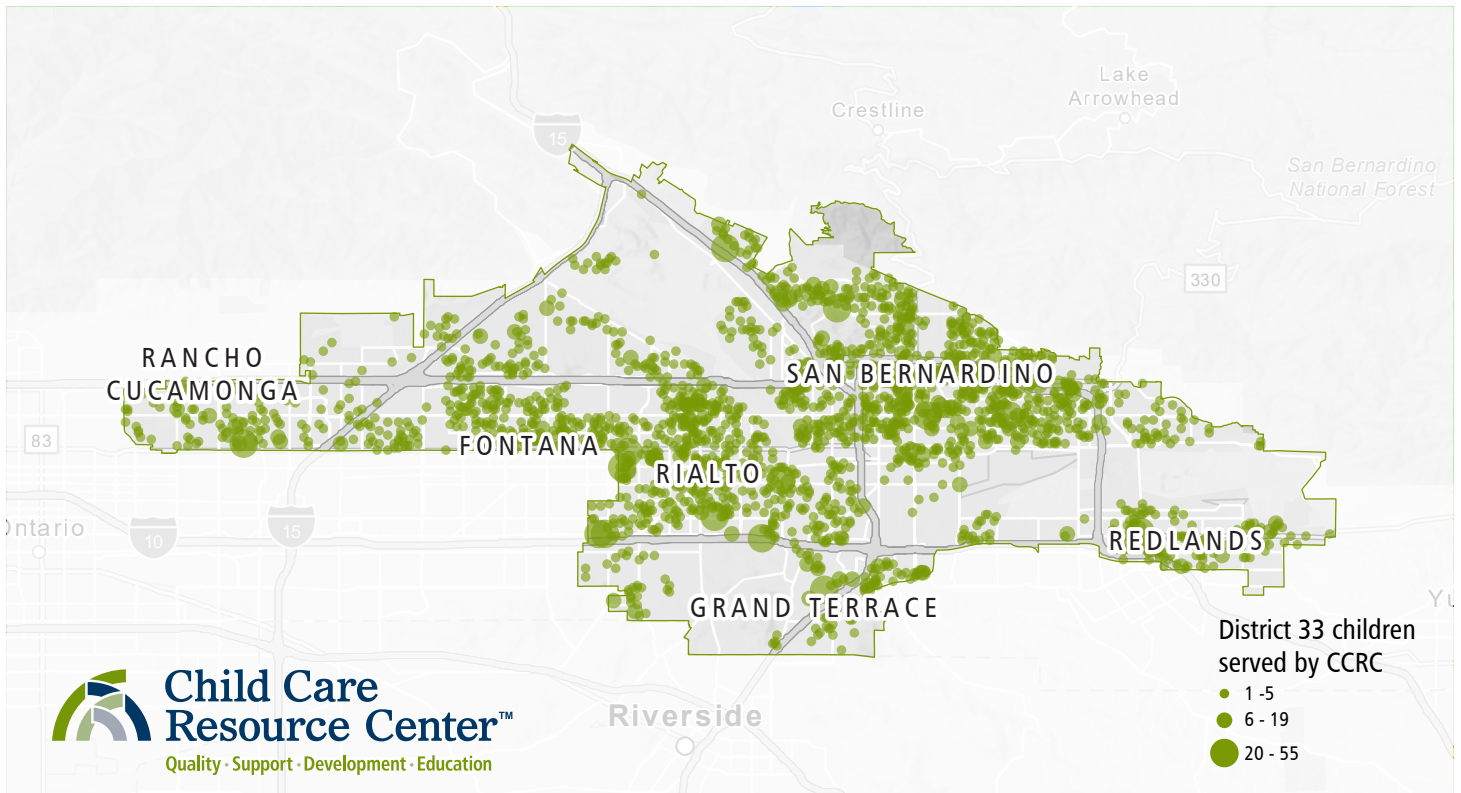
Scan the QR code to explore CCRC's legislative data dashboard including charts, maps, and more.







# Pete Aguilar · Congressman · District 33



Congressman Pete Aguilar was elected in 2014 and represents the 33rd Congressional District, which includes the cities of Redlands, San Bernardino, and Loma Linda.

Congressman Aguilar represents over 763,000 constituents. Prior to joining the U.S. House of Representatives, he served as the Mayor of Redlands, where he gained a reputation for

bipartisanship and his commitment to improving the community. Congressman Aguilar currently serves as the Chair of the House Democratic Caucus.

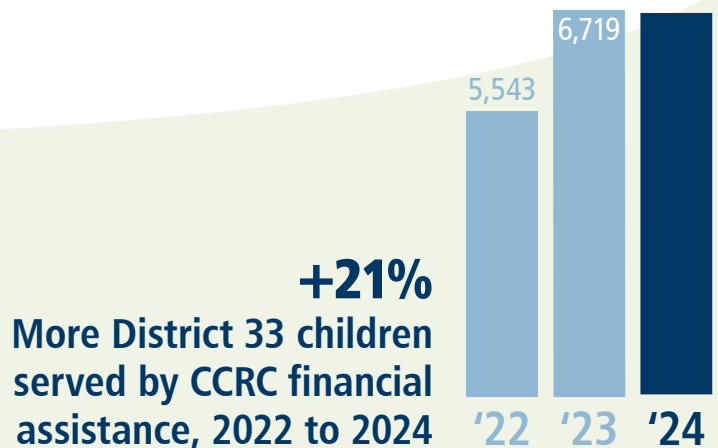
**3,669**  
Families served by CCRC

**\$120.9m**  
Total family earnings

**1,870**  
Providers receiving CCRC  
child care financial assistance

**\$70m**  
Invested in community  
child care providers

**6,689**  
children



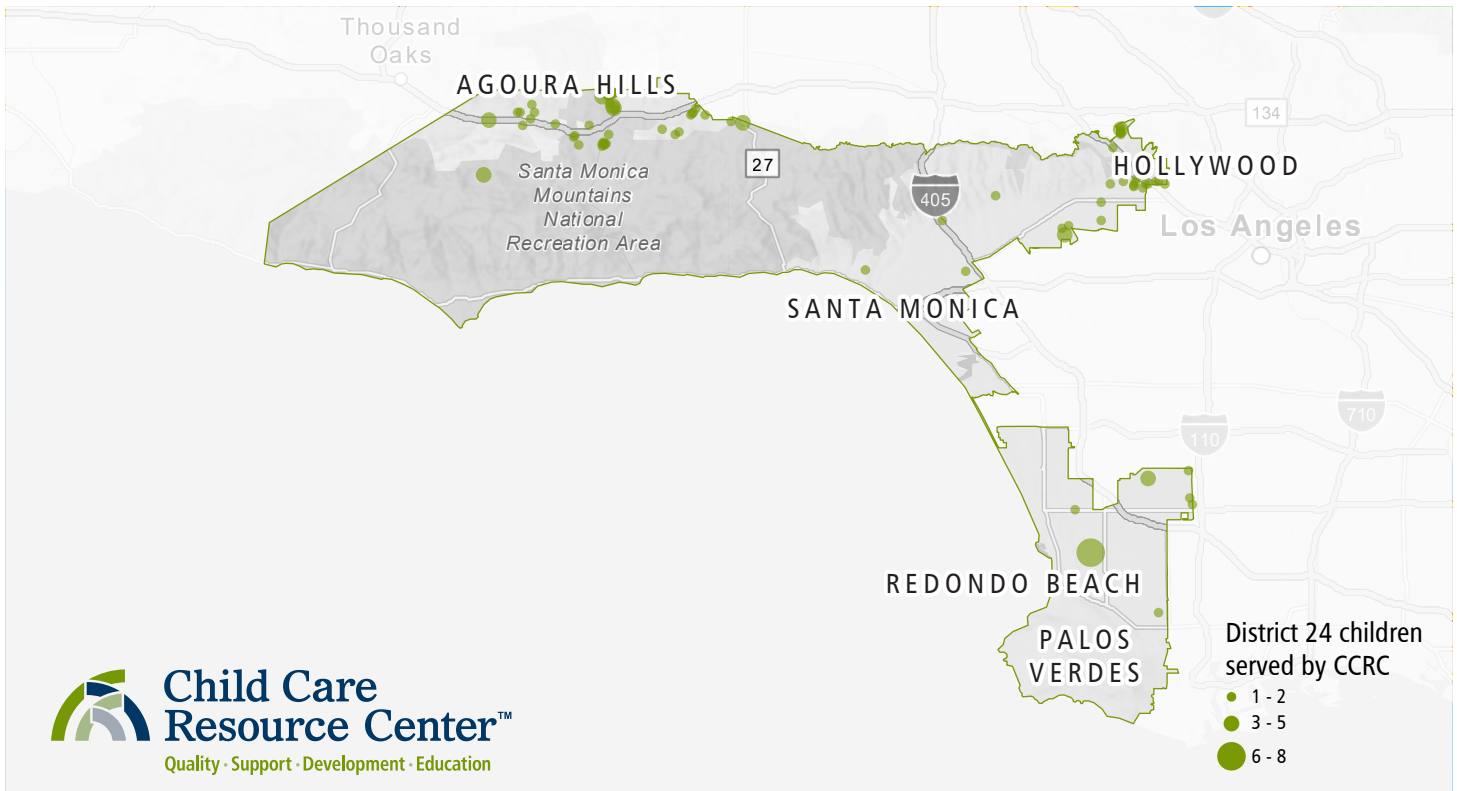
Do you know a parent in need of child care? A family of four earning \$7,900/mo may qualify. Scan the QR code for more information.



Scan the QR code to explore CCRC's legislative data dashboard including charts, maps, and more.



# Ben Allen · State Senator · District 24



Senator Ben Allen was elected in 2014 and represents the 24th District in the California State Senate, which includes Agoura Hills, Calabasas, and Hidden Hills. Senator Allen represents over one million constituents. Prior to

joining the State Legislature, he was the President of the Santa Monica-Malibu Unified School District Board of Education and lecturer at UCLA Law School.

**133**

Families served by CCRC

**\$3.9m**

Total family earnings

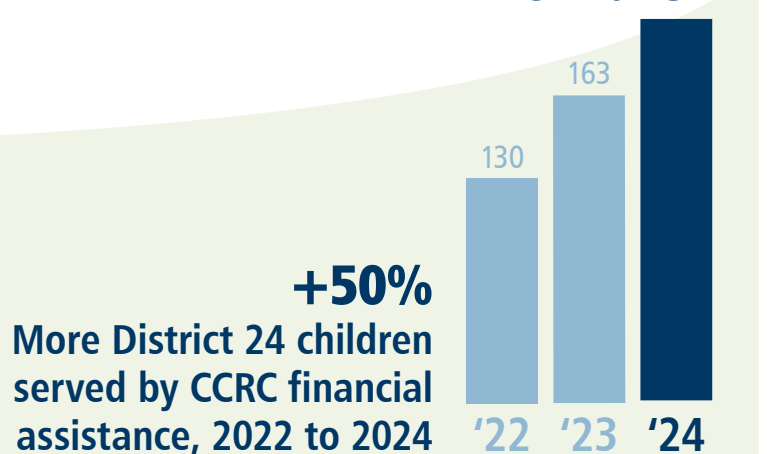
**100**

Providers receiving CCRC child care financial assistance

**\$1.3m**

Invested in community child care providers

**195 children**



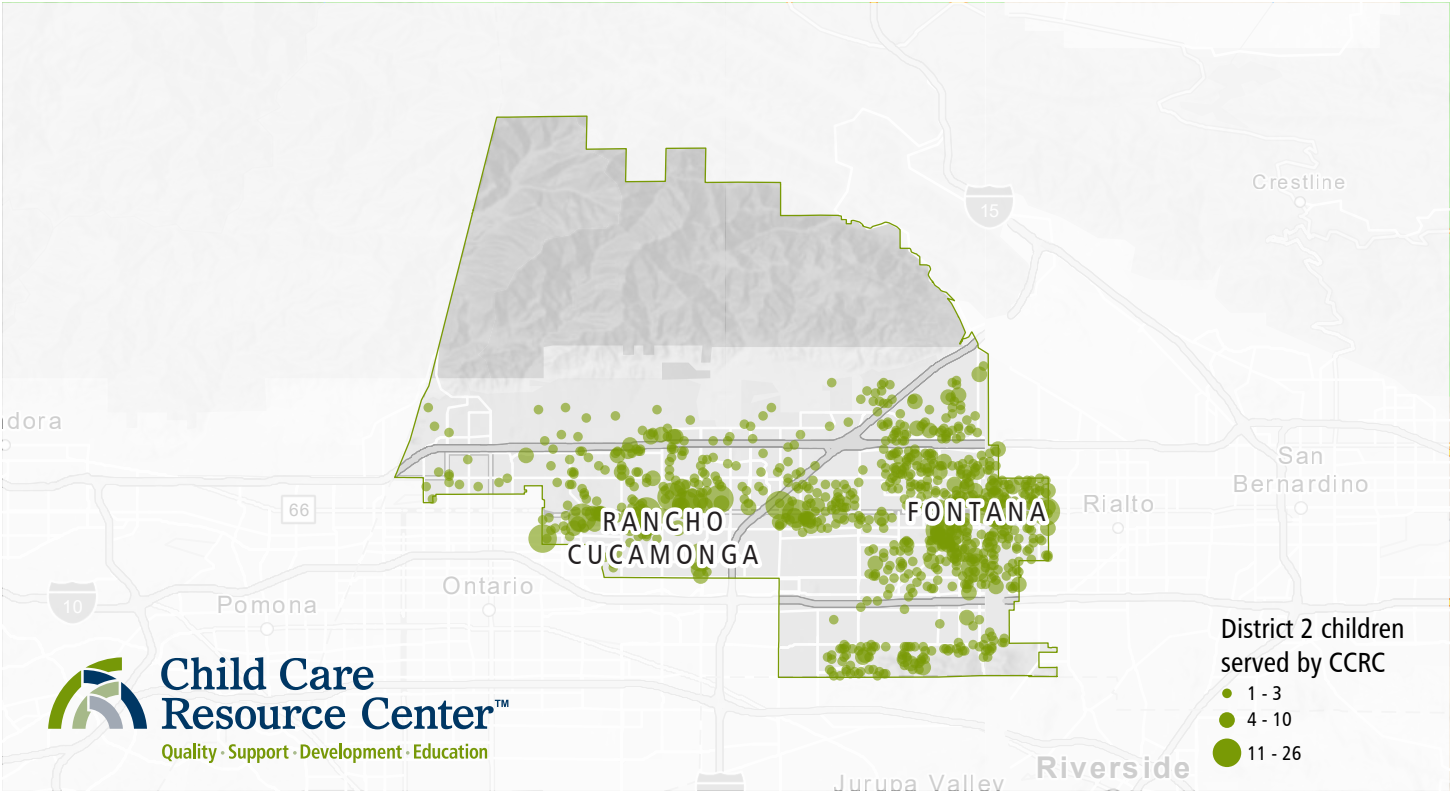
Do you know a parent in need of child care? A family of four earning \$7,900/mo may qualify. Scan the QR code for more information.



Scan the QR code to explore CCRC's legislative data dashboard including charts, maps, and more.



# Jesse Armendarez · San Bernardino County Supervisor · District 2



Supervisor Jesse Armendarez was elected to the San Bernardino County Board of Supervisors in November 2022, representing the Second District, which includes the cities of Fontana, Rancho Cucamonga, and

North Upland. Supervisor Armendarez represents over 400,000 constituents. Before his election, he served on the Fontana Planning Commission, the Fontana Unified School District Board, and as a Fontana City Councilman.

**1,386**  
Families served by CCRC

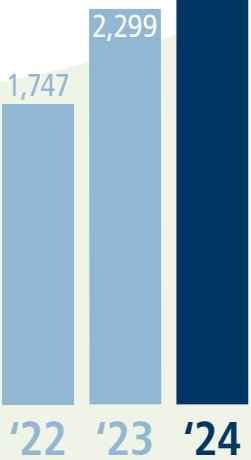
**\$46.4m**  
Total family earnings

**640**  
Providers receiving CCRC  
child care financial assistance

**\$24.2m**  
Invested in community  
child care providers

**2,366**  
children

**+35%**  
More District 2 children  
served by CCRC financial  
assistance, 2022 to 2024



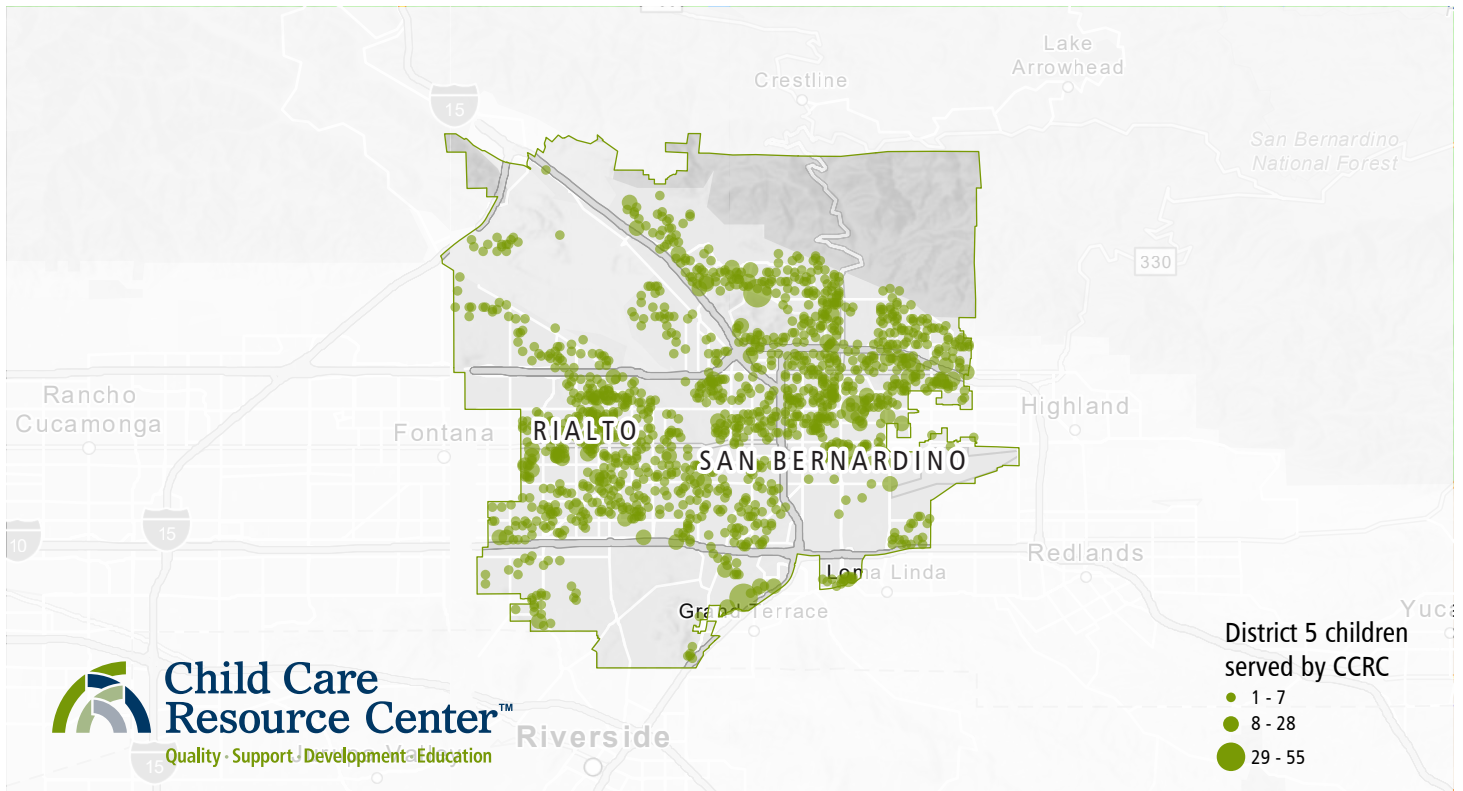
Do you know a parent in need of child care? A family of four earning \$7,900/mo may qualify. Scan the QR code for more information.



Scan the QR code to explore CCRC's legislative data dashboard including charts, maps, and more.



# Joe Baca Jr. · San Bernardino County Supervisor · District 5



Supervisor Joe Baca, Jr. has proudly represented the 5th District of San Bernardino County since 2020, serving communities such as Colton, San Bernardino, Rialto, and several unincorporated areas. The Supervisor

represents over 400,000 constituents. He has a deep understanding of the district's needs, having worked in law enforcement, as a teacher in the Rialto Unified School District, and on the Rialto City Council. He served in

the California State Assembly and continues to focus on public safety, youth development, and infrastructure projects, including road enhancements and affordable housing.

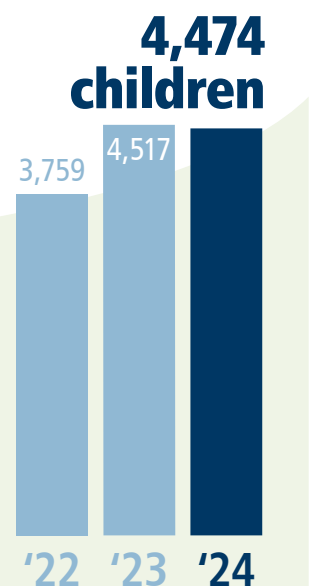
**2,417**  
Families served by CCRC

**\$78.8m**  
Total family earnings

**1,272**  
Providers receiving CCRC  
child care financial assistance

**\$37.3m**  
Invested in community  
child care providers

**+19%**  
More District 5 children  
served by CCRC financial  
assistance, 2022 to 2024



Do you know a parent in need of child care? A family of four earning \$7,900/mo may qualify. Scan the QR code for more information.

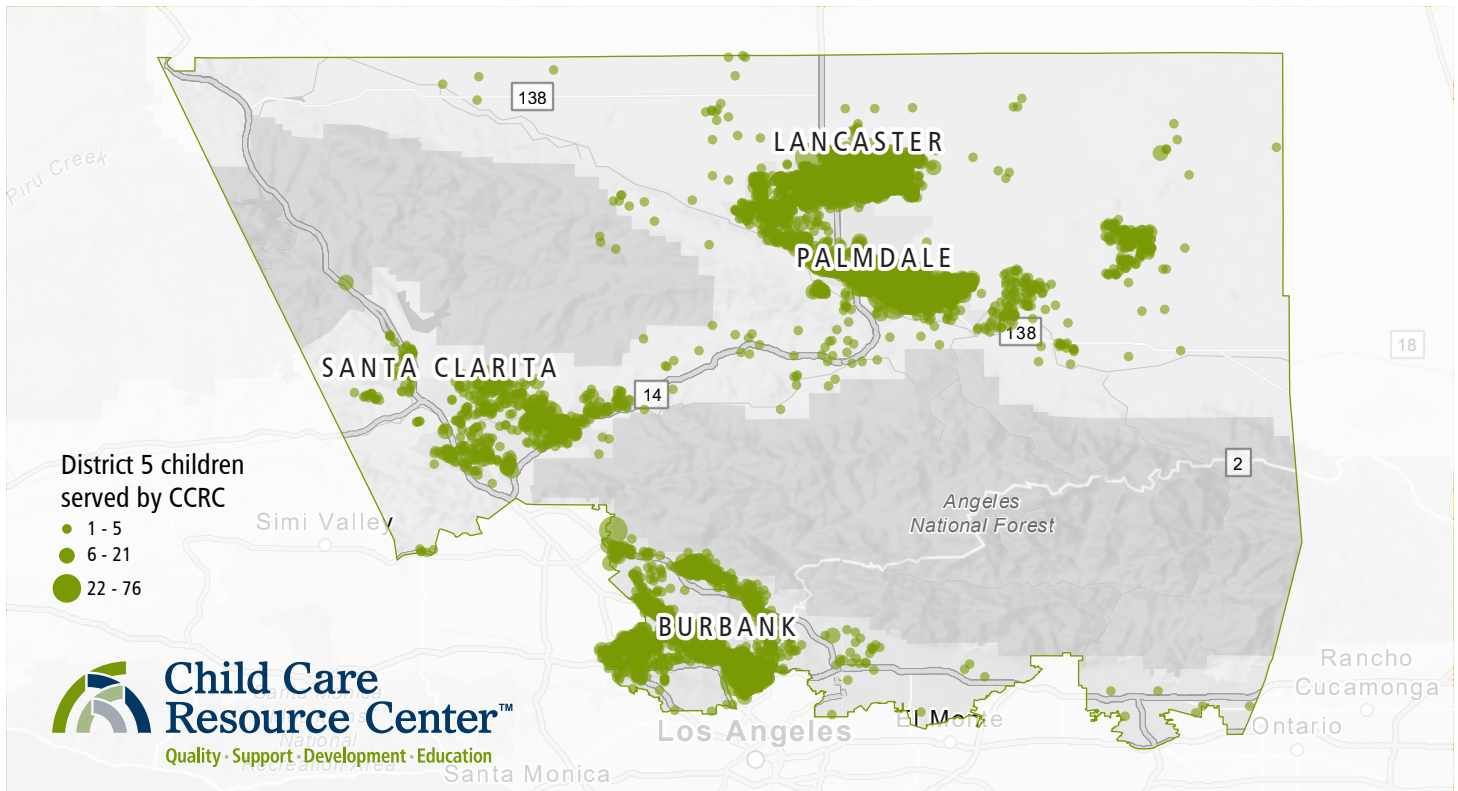


Scan the QR code to explore CCRC's legislative data dashboard including charts, maps, and more.





# Kathryn Barger · L.A. County Supervisor · District 5



Supervisor Kathryn Barger was elected in 2016 and represents the 5th District in the Los Angeles County Board of Supervisors, which includes 22 cities and 70 unincorporated communities in the Antelope, San Gabriel, San

Fernando, Crescenta, and Santa Clarita Valleys. Supervisor Barger represents nearly two million constituents. Prior to joining the Board of Supervisors, she was the Chief Deputy for Supervisor Michael D. Antonovich.

**15,581**

Families served by CCRC

**\$576.6m**

Total family earnings

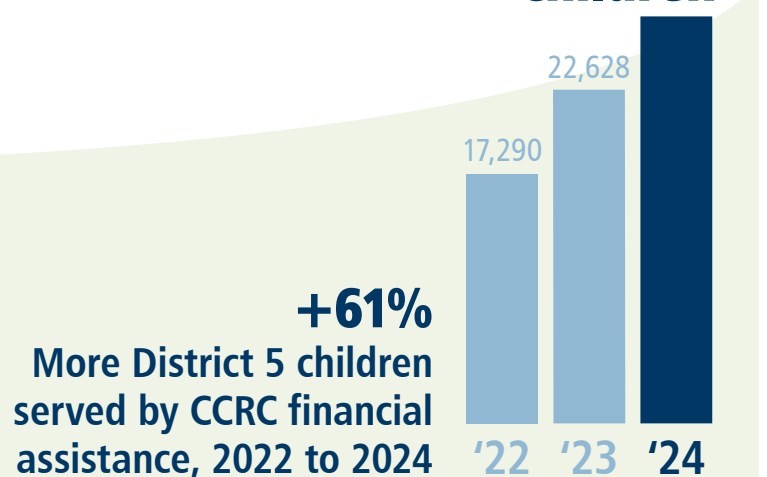
**7,105**

Providers receiving CCRC child care financial assistance

**\$261.9m**

Invested in community child care providers

**27,803**  
children



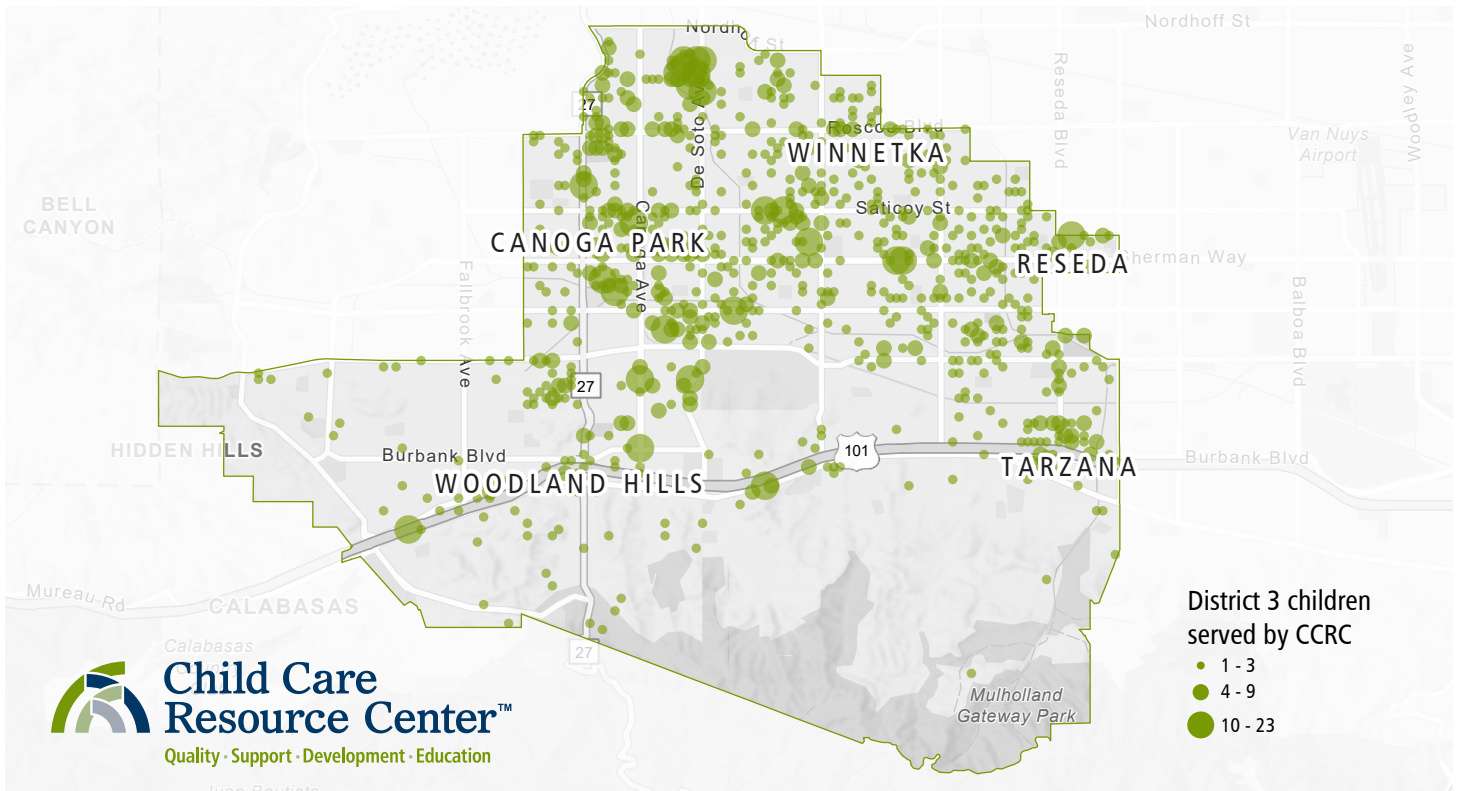
Do you know a parent in need of child care? A family of four earning \$7,900/mo may qualify. Scan the QR code for more information.



Scan the QR code to explore CCRC's legislative data dashboard including charts, maps, and more.



# Bob Blumenfield · L.A. City Council · District 3



Councilmember Bob Blumenfield was elected in 2013 and represents the 3rd District in the Los Angeles City Council which includes Canoga Park, Reseda, Tarzana, Winnetka and Woodland Hills.

Councilmember Blumenfield represents 260,000 constituents. Prior to joining the City Council, he served in the California State Assembly from 2008 to 2013.

**1,723**  
Families served by CCRC

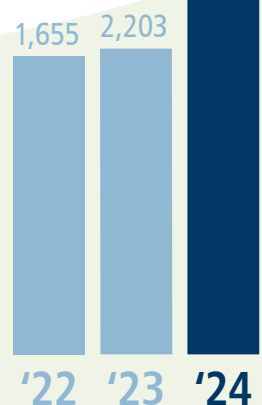
**\$61.4m**  
Total family earnings

**627**  
Providers receiving CCRC  
child care financial assistance

**\$28.9m**  
Invested in community  
child care providers

**2,663**  
children

**+61%**  
More District 3 children  
served by CCRC financial  
assistance, 2022 to 2024



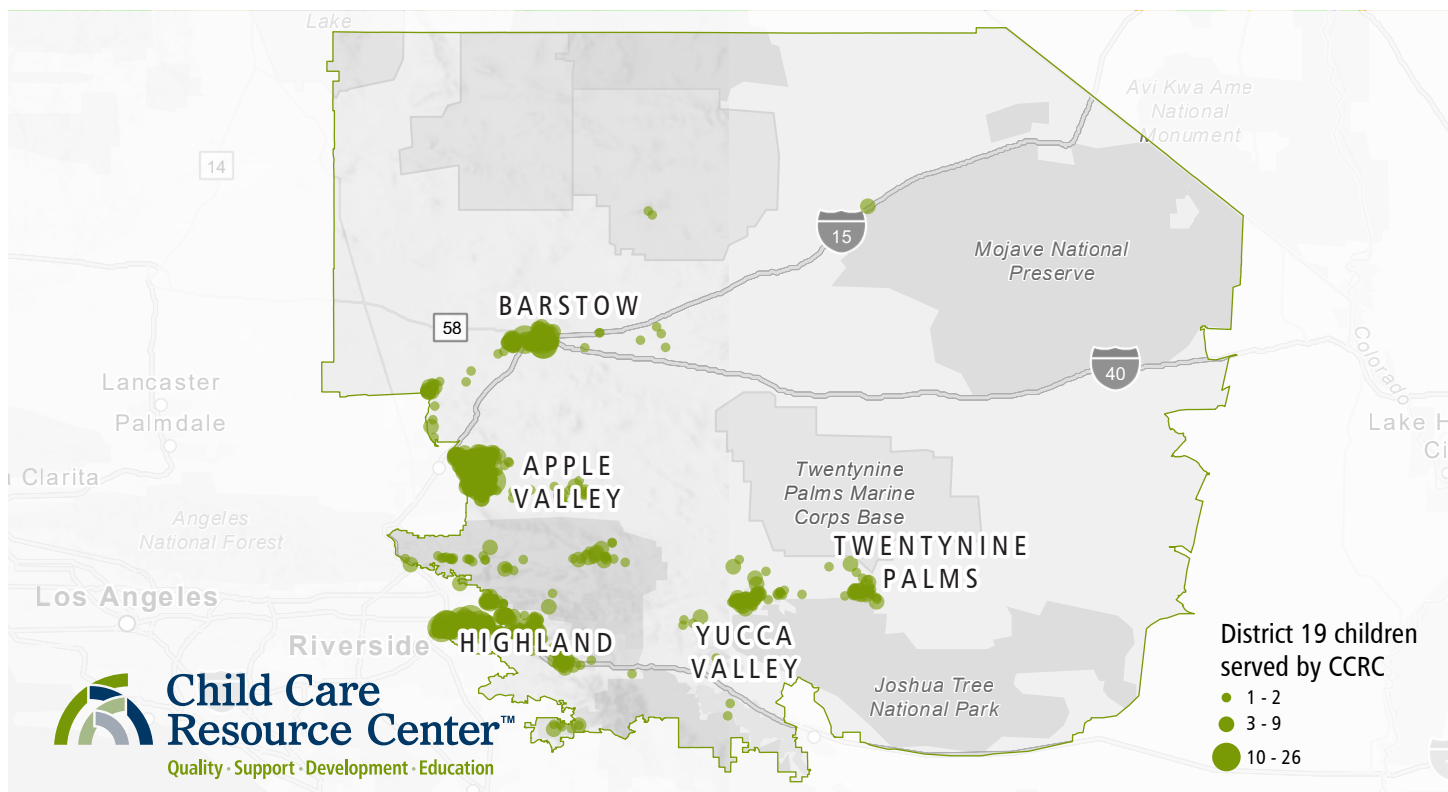
Do you know a parent in need of child care? A family of four earning \$7,900/mo may qualify. Scan the QR code for more information.



Scan the QR code to explore CCRC's legislative data dashboard including charts, maps, and more.



# Rosilicie Ochoa Bogh · State Senator · District 19



Senator Rosilicie Ochoa Bogh was elected in 2020 and represents the 19th Senate District, which is the 3rd largest California Senate District encompassing 40 cities and communities. Senator Ochoa Bogh represents

over 951,000 residents. Throughout her career, Ochoa Bogh has been a champion for stronger schools, lower taxes, better infrastructure, and more affordable home prices. In the State Senate, she has worked to lower the

cost of living in California, support a strong economic recovery, preserve local control, and reverse the cycle of higher taxes and increased government intrusion.

**1,762**

Families served by CCRC

**\$54.4m**

Total family earnings

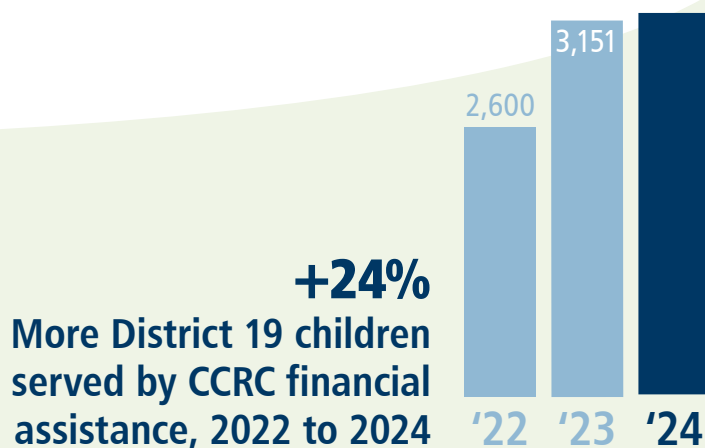
**919**

Providers receiving CCRC child care financial assistance

**\$26.2m**

Invested in community child care providers

**3,220 children**



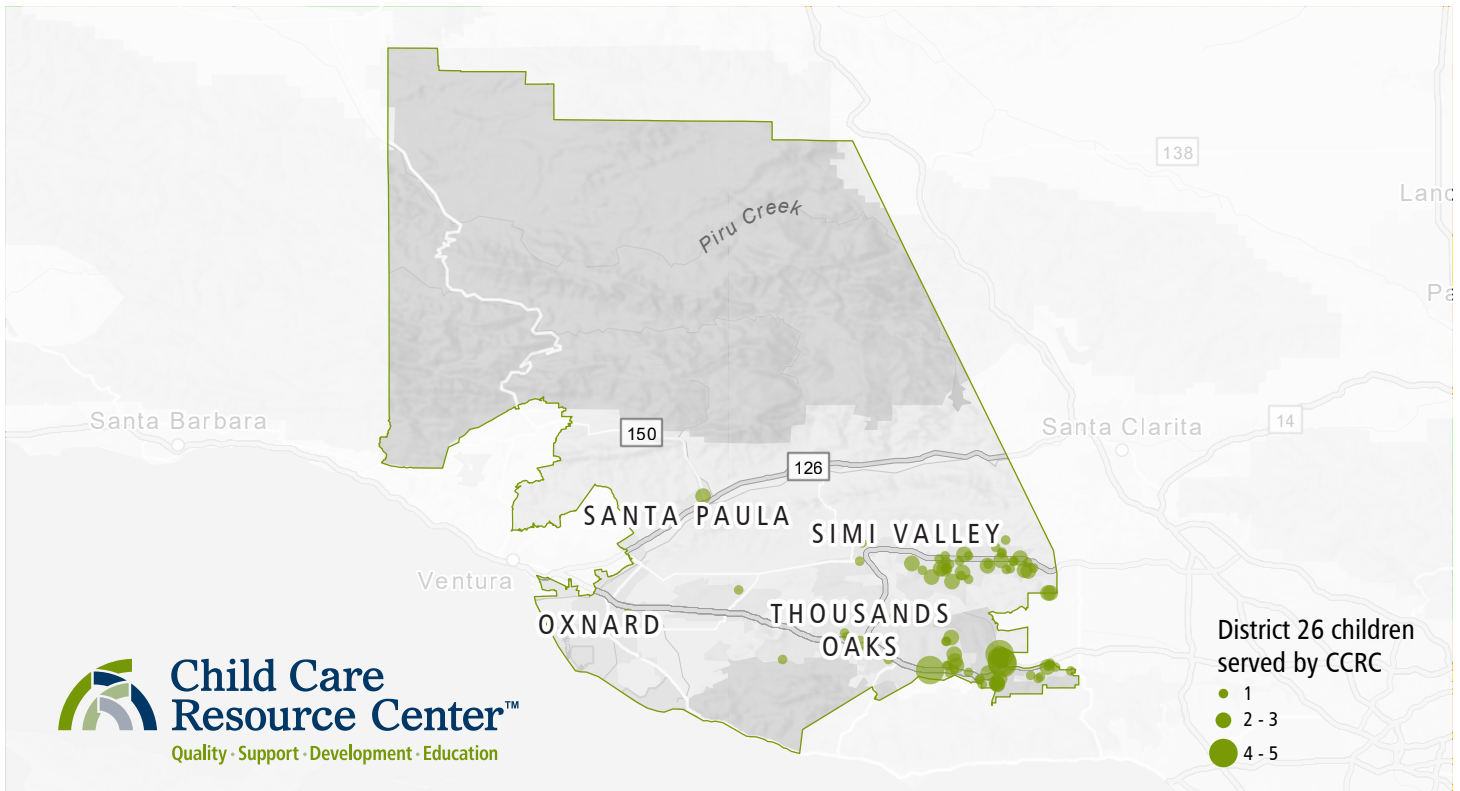
Do you know a parent in need of child care? A family of four earning \$7,900/mo may qualify. Scan the QR code for more information.



Scan the QR code to explore CCRC's legislative data dashboard including charts, maps, and more.



# Julia Brownley · Congresswoman · District 26



Congresswoman Julia Brownley was elected in 2012 and represents the 26th District in the U.S. House of Representatives, which includes most of Ventura County and a portion of Los Angeles County such as Calabasas

and Agoura Hills. Congresswoman Brownley represents 740,000 constituents. Prior to joining Congress, she served in the California State Assembly from 2006 to 2012.

**147**

Families served by CCRC

**\$4.4m**

Total family earnings

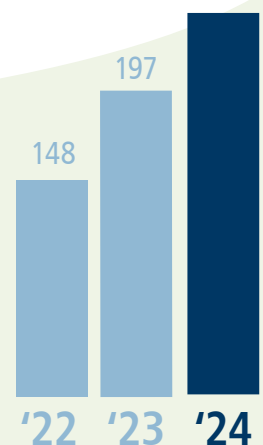
**95**

Providers receiving CCRC child care financial assistance

**\$1.8m**

Invested in community child care providers

**216**  
children



**+46%**

More District 26 children served by CCRC financial assistance, 2022 to 2024



Do you know a parent in need of child care? A family of four earning \$7,900/mo may qualify. Scan the QR code for more information.

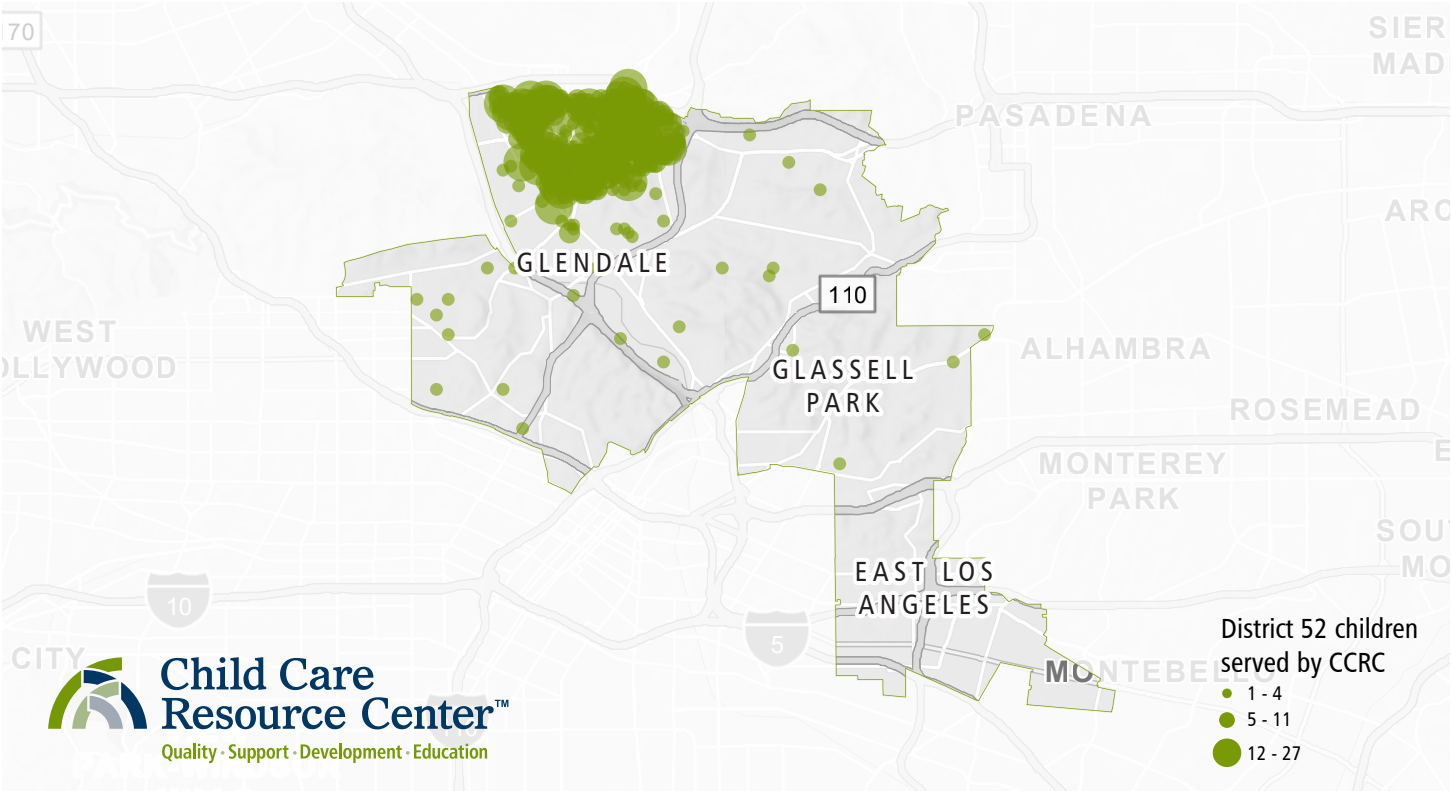


Scan the QR code to explore CCRC's legislative data dashboard including charts, maps, and more.





# Jessica Caloza · State Assemblymember · District 52



Assemblymember Jessica Caloza was elected in 2024 and represents the 52nd District in the California State Assembly, which includes South Glendale, East Los Angeles, and Northeast Los Angeles. Assembly-

member Caloza represents 510,000 constituents. She is a proud immigrant, lifelong public servant, and an advocate for working families throughout her various roles at the federal, state, and local levels.

**1,891**  
Families served by CCRC

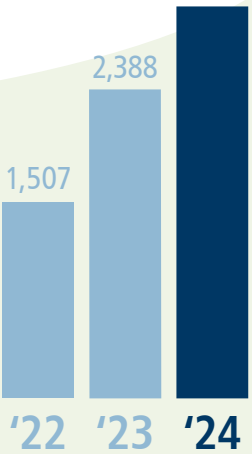
**\$41.3m**  
Total family earnings

**436**  
Providers receiving CCRC  
child care financial assistance

**\$35.9m**  
Invested in community  
child care providers

**3,059**  
children

**+103%**  
More District 52 children  
served by CCRC financial  
assistance, 2022 to 2024



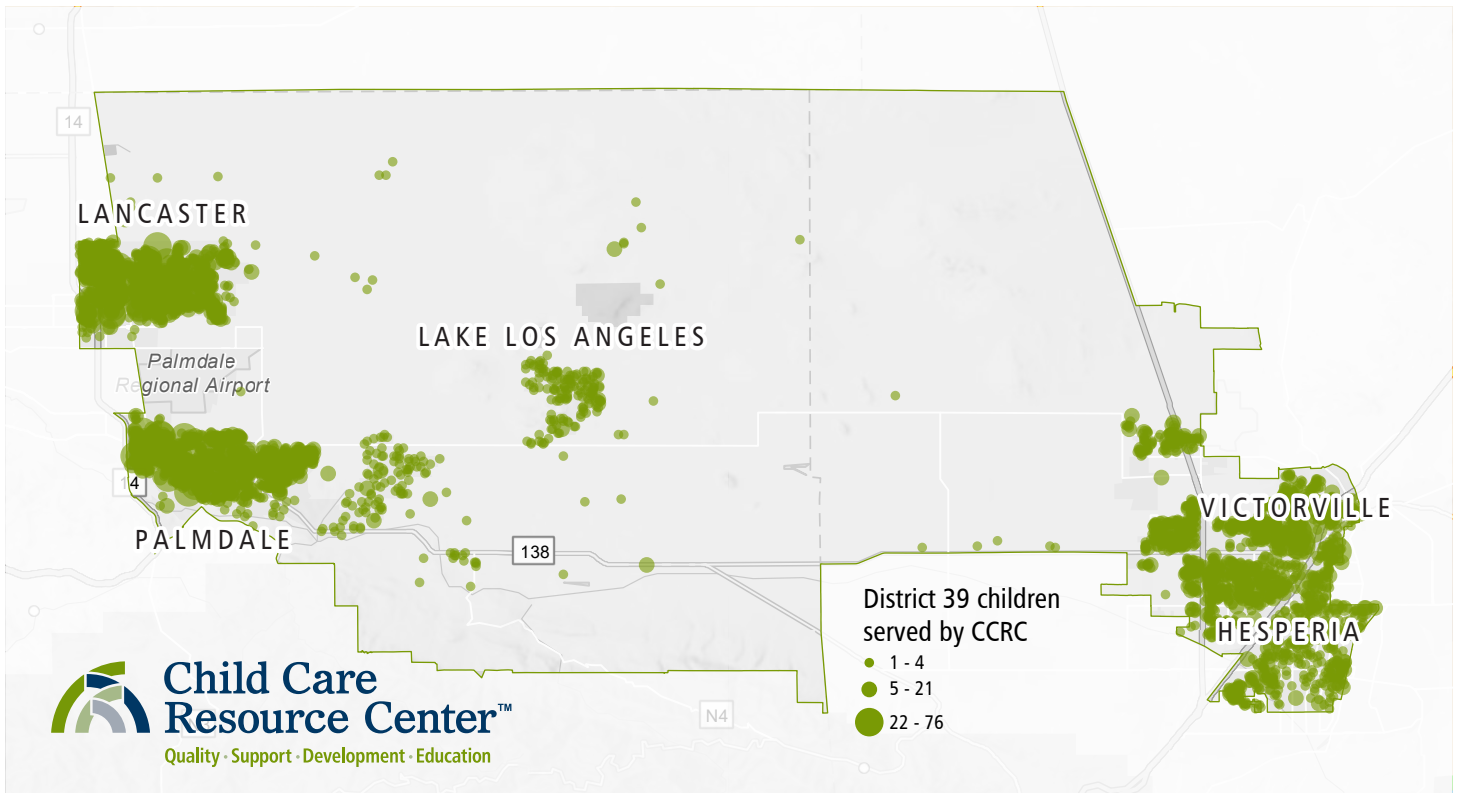
Do you know a parent in need of child care? A family of four earning \$7,900/mo may qualify. Scan the QR code for more information.



Scan the QR code to explore CCRC's legislative data dashboard including charts, maps, and more.



# Juan Carrillo · State Assemblymember · District 39



Assemblymember Juan Carrillo was elected in 2022 and represents the 39th District in the California State Assembly, which includes Palmdale, Lancaster, Littlerock, and Lake Los Angeles in Los Angeles County, as well as Adelanto,

Hesperia, Mountain View Acres and Victorville in San Bernardino County. Assemblymember Carrillo represents 480,000 constituents. Prior to joining the State Legislature, he served as a member of the Palmdale City Council.

**10,145**

Families served by CCRC

**\$404.1m**

Total family earnings

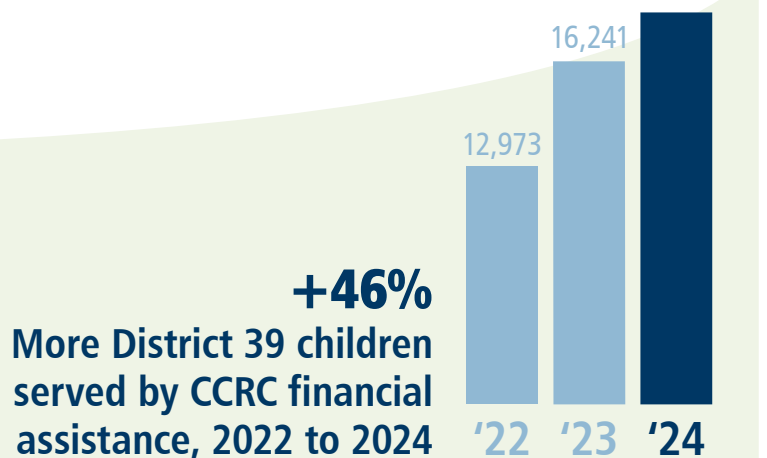
**5,445**

Providers receiving CCRC child care financial assistance

**\$157.4m**

Invested in community child care providers

**18,912**  
children



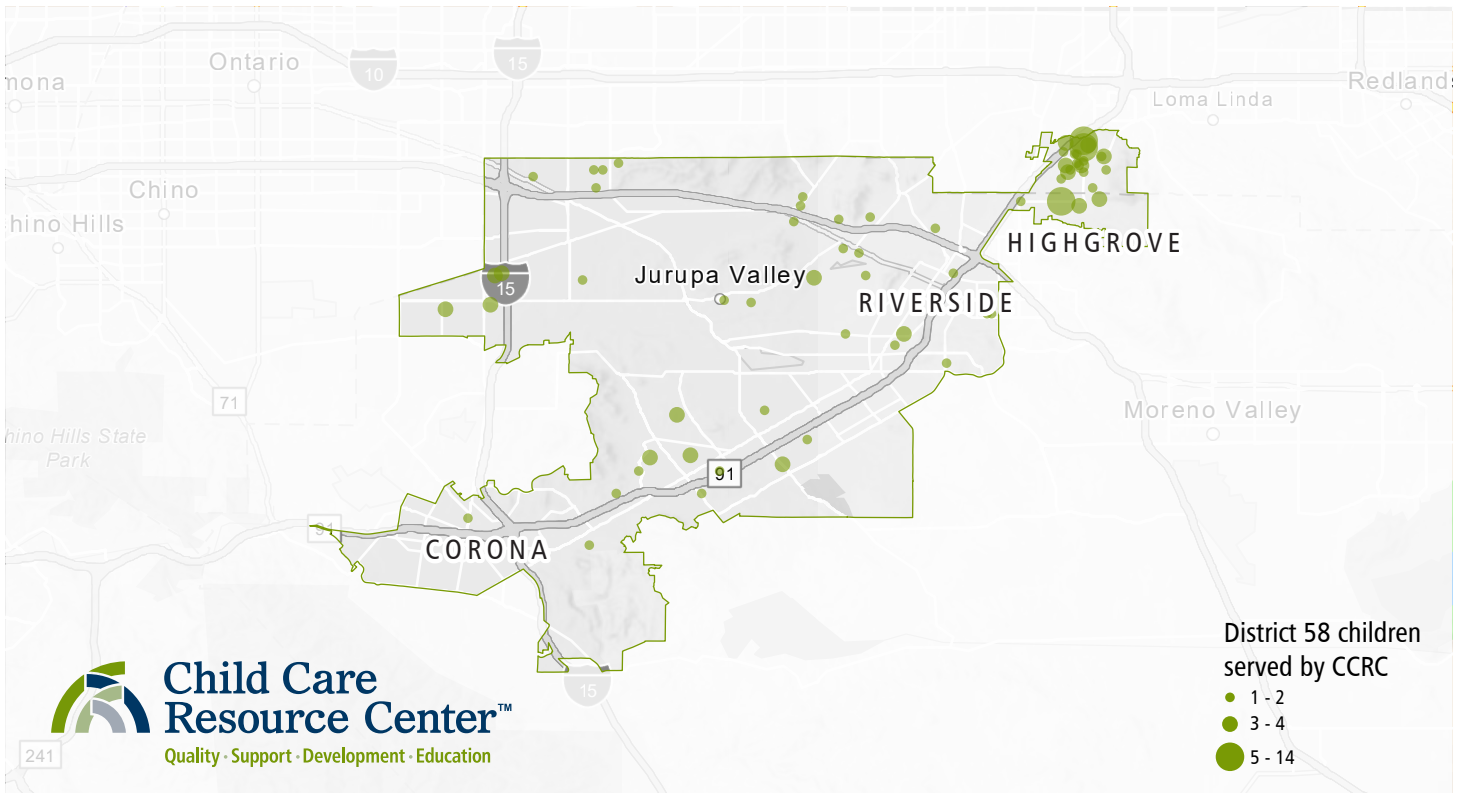
Do you know a parent in need of child care? A family of four earning \$7,900/mo may qualify. Scan the QR code for more information.



Scan the QR code to explore CCRC's legislative data dashboard including charts, maps, and more.



# Leticia Castillo · State Assemblymember · District 58



Assemblymember Leticia Castillo was elected in 2024 to represent California's 58th Assembly District, which includes parts of Riverside County. Assemblymember Castillo represents over 498,000 constituents.

Representing a district with a diverse range of political views, she works to find common ground and serve all constituents. Leticia is committed to addressing issues such as education, economic opportunity, and public

safety, while always prioritizing collaboration and respect across party lines.

**111**

Families served by CCRC

**\$3.8m**

Total family earnings

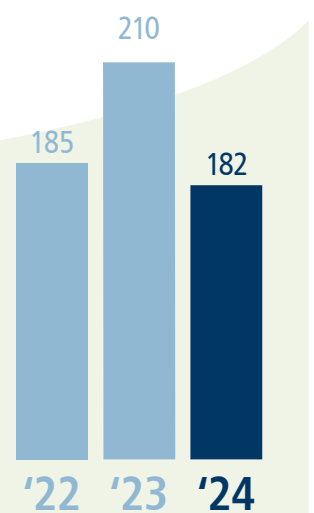
**140**

Providers receiving CCRC child care financial assistance

**\$2.3m**

Invested in community child care providers

District 58 children served by CCRC financial assistance, 2022 to 2024



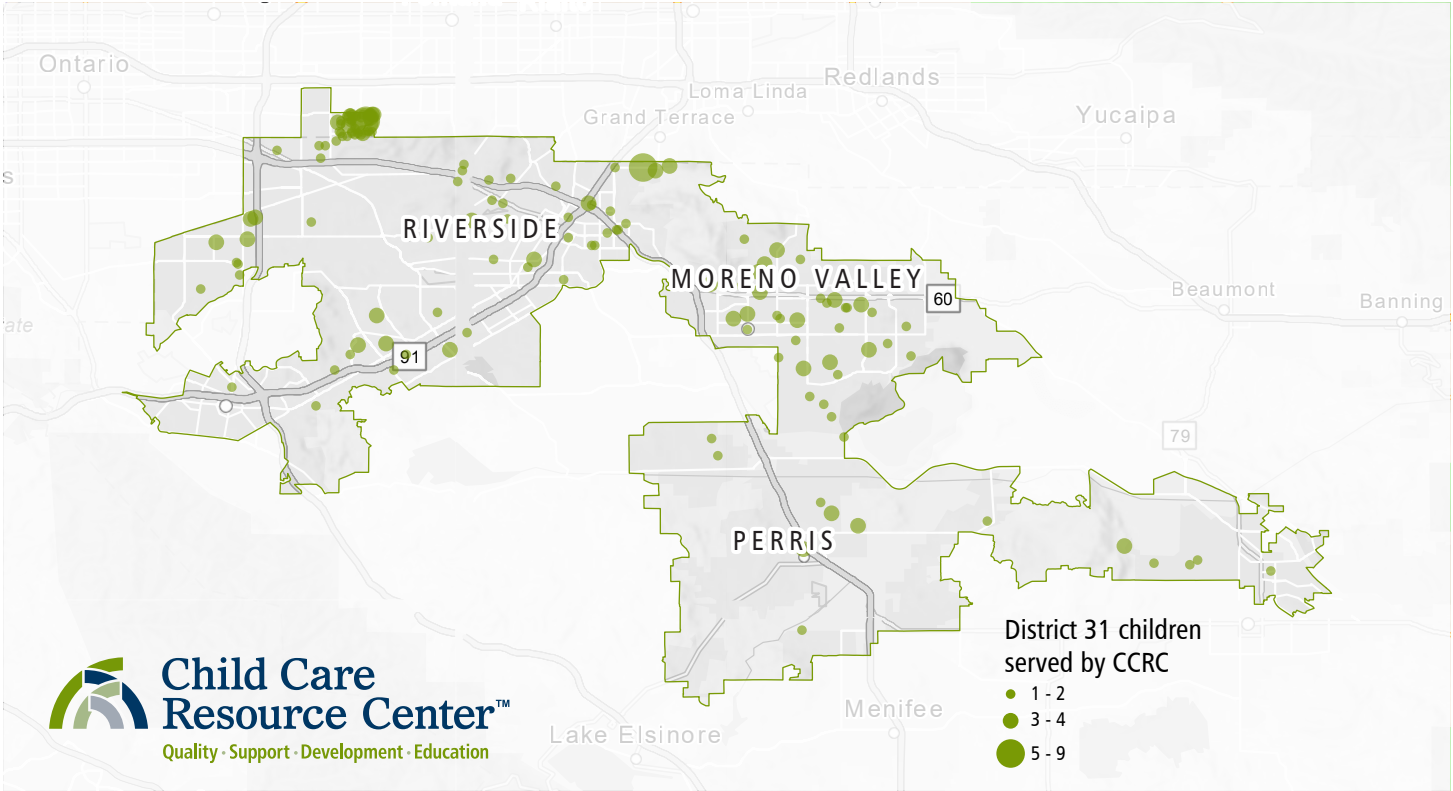
Do you know a parent in need of child care? A family of four earning \$7,900/mo may qualify. Scan the QR code for more information.



Scan the QR code to explore CCRC's legislative data dashboard including charts, maps, and more.



# Sabrina Cervantes · State Senator · District 31



Senator Sabrina Cervantes was elected in 2024 to represent California's 31st Senate District, covering Riverside County and the Inland Empire. Representing over 960,000 constituents, she worked tirelessly to

improve access to healthcare, education, and economic opportunities. As the immediate past Chair of the California Latino Legislative Caucus, she led historic efforts to advance policies for marginalized

communities. Senator Cervantes has successfully passed 49 bills into law, including initiatives to support maternal mental health, student financial aid, and survivors of sexual assault.

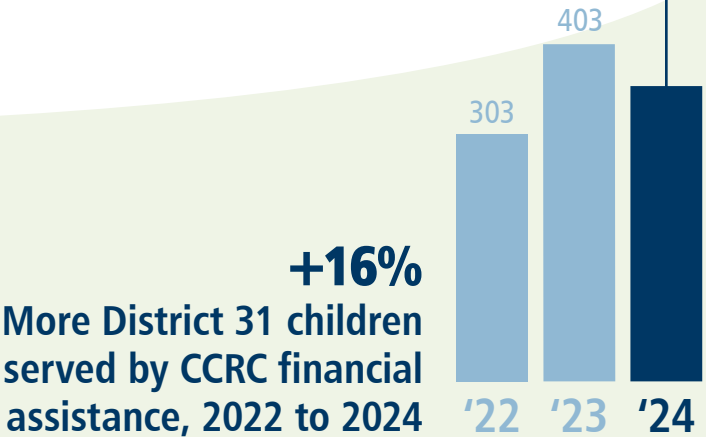
**190**  
Families served by CCRC

**\$6.3m**  
Total family earnings

**238**  
Providers receiving CCRC  
child care financial assistance

**\$4.1m**  
Invested in community  
child care providers

**350**  
children



Do you know a parent in need of child care? A family of four earning \$7,900/mo may qualify. Scan the QR code for more information.



Scan the QR code to explore CCRC's legislative data dashboard including charts, maps, and more.





# Col. Paul Cook · San Bernardino County Supervisor · District 1



Col. Paul Cook (Ret.) was elected to the San Bernardino County Board of Supervisors in March 2020, representing the First District, which includes cities such as Apple Valley, Barstow, and Hesperia. Supervisor Cook

represents over 400,000 constituents. A veteran of the Vietnam War, Cook served 26 years in the U.S. Marine Corps, earning two Purple Hearts and the Bronze Star Medal with a V for valor. Prior to his role as a Supervisor,

he served as a U.S. Congressman for California's 8th Congressional District and in the California State Legislature.

**4,339**  
Families served by CCRC

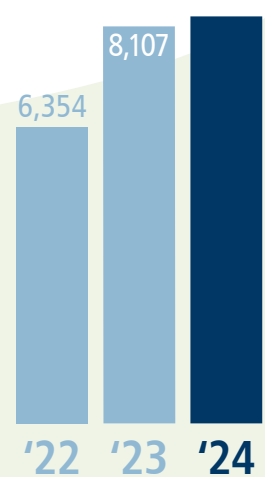
**\$125.9m**  
Total family earnings

**2,342**  
Providers receiving CCRC  
child care financial assistance

**\$73.6m**  
Invested in community  
child care providers

**8,392**  
children

**+32%**  
More District 1 children  
served by CCRC financial  
assistance, 2022 to 2024



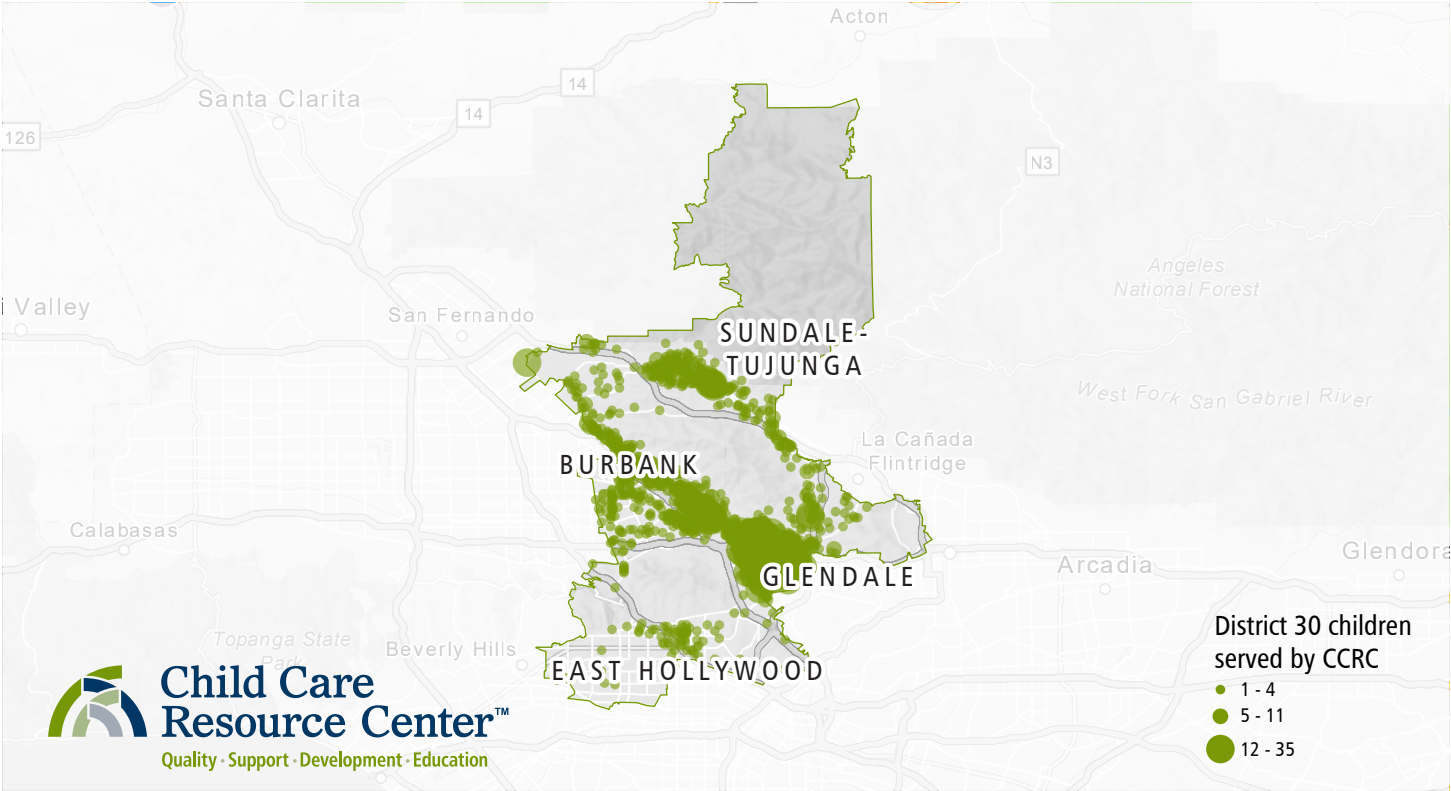
Do you know a parent in need of child care? A family of four earning \$7,900/mo may qualify. Scan the QR code for more information.



Scan the QR code to explore CCRC's legislative data dashboard including charts, maps, and more.



# Laura Friedman · Congresswoman · District 30



Congresswoman Laura Friedman was elected in 2025 and represents the 30th District in the U.S. House of Representatives, which includes Burbank, Glendale, West Hollywood,

and parts of Los Angeles and Pasadena. Congresswoman Friedman represents 750,000 constituents. Prior to joining Congress, she represented the 44th district in the

California State Assembly and served on the Glendale City Council and as the Mayor of Glendale.

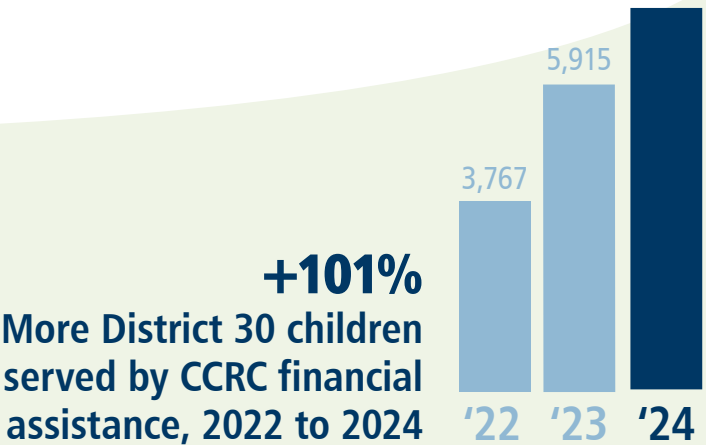
**4,615**  
Families served by CCRC

**\$107.1m**  
Total family earnings

**1,303**  
Providers receiving CCRC  
child care financial assistance

**\$93.6m**  
Invested in community  
child care providers

**7,565**  
children



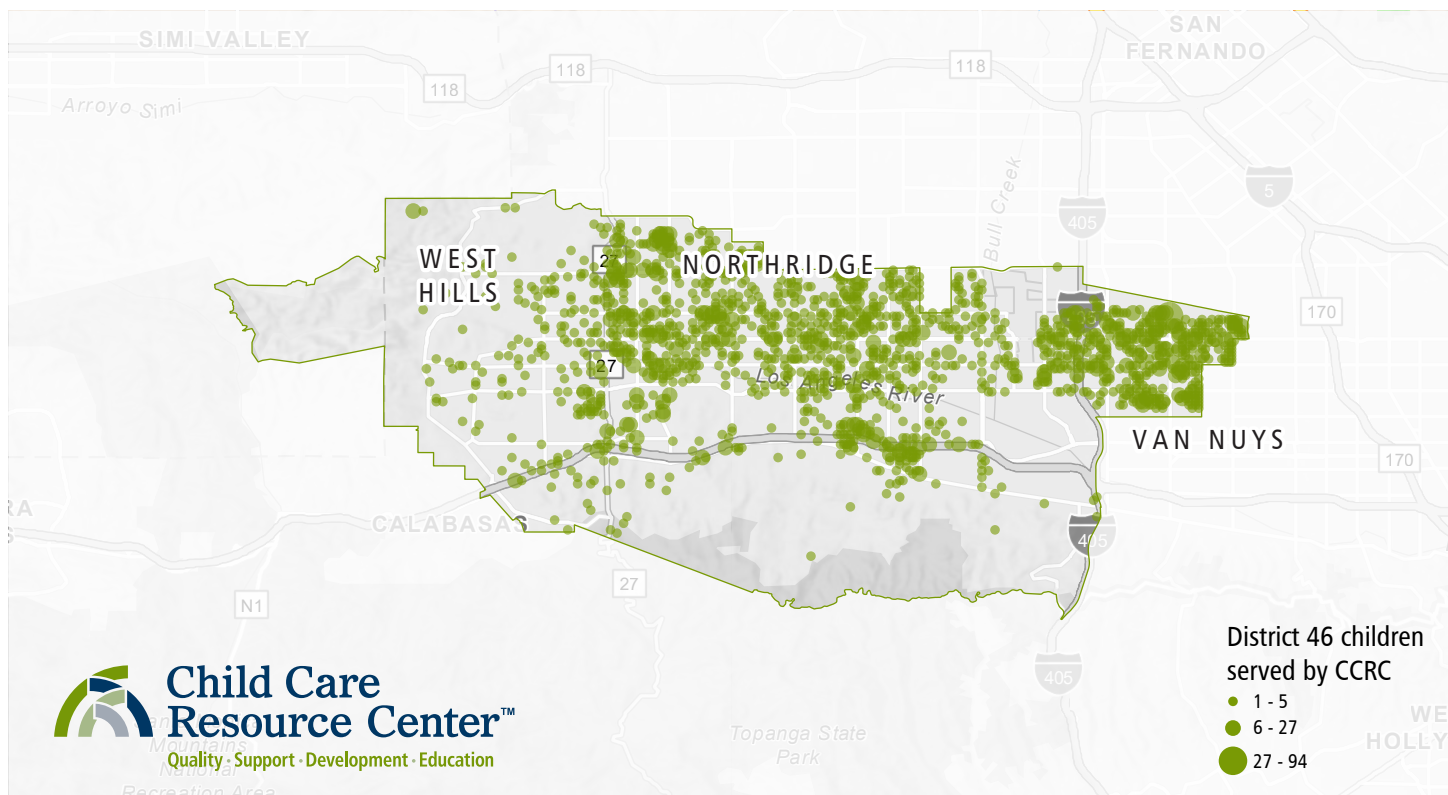
Do you know a parent in need of child care? A family of four earning \$7,900/mo may qualify. Scan the QR code for more information.



Scan the QR code to explore CCRC's legislative data dashboard including charts, maps, and more.



# Jesse Gabriel · State Assemblymember · District 46



Assemblymember Jesse Gabriel was elected in 2018 and represents the 46th District in the California State Assembly, which includes Van Nuys, Lake Balboa, Encino, Reseda, Tarzana, Winnetka, Canoga Park, Warner Center, and West Hills.

Assemblymember Gabriel represents over 500,000 constituents. Prior to joining the State Legislature, he worked as a constitutional rights attorney representing clients in state and federal courts, including the United States Supreme Court.

**3,831**  
Families served by CCRC

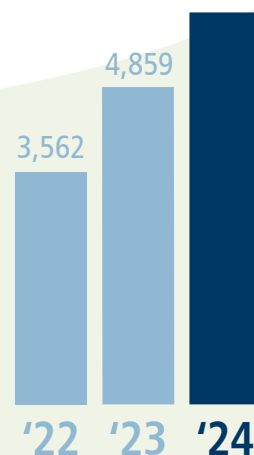
**\$143.6m**  
Total family earnings

**1,321**  
Providers receiving CCRC  
child care financial assistance

**\$58.7m**  
Invested in community  
child care providers

**6,002**  
children

**+69%**  
More District 46 children  
served by CCRC financial  
assistance, 2022 to 2024



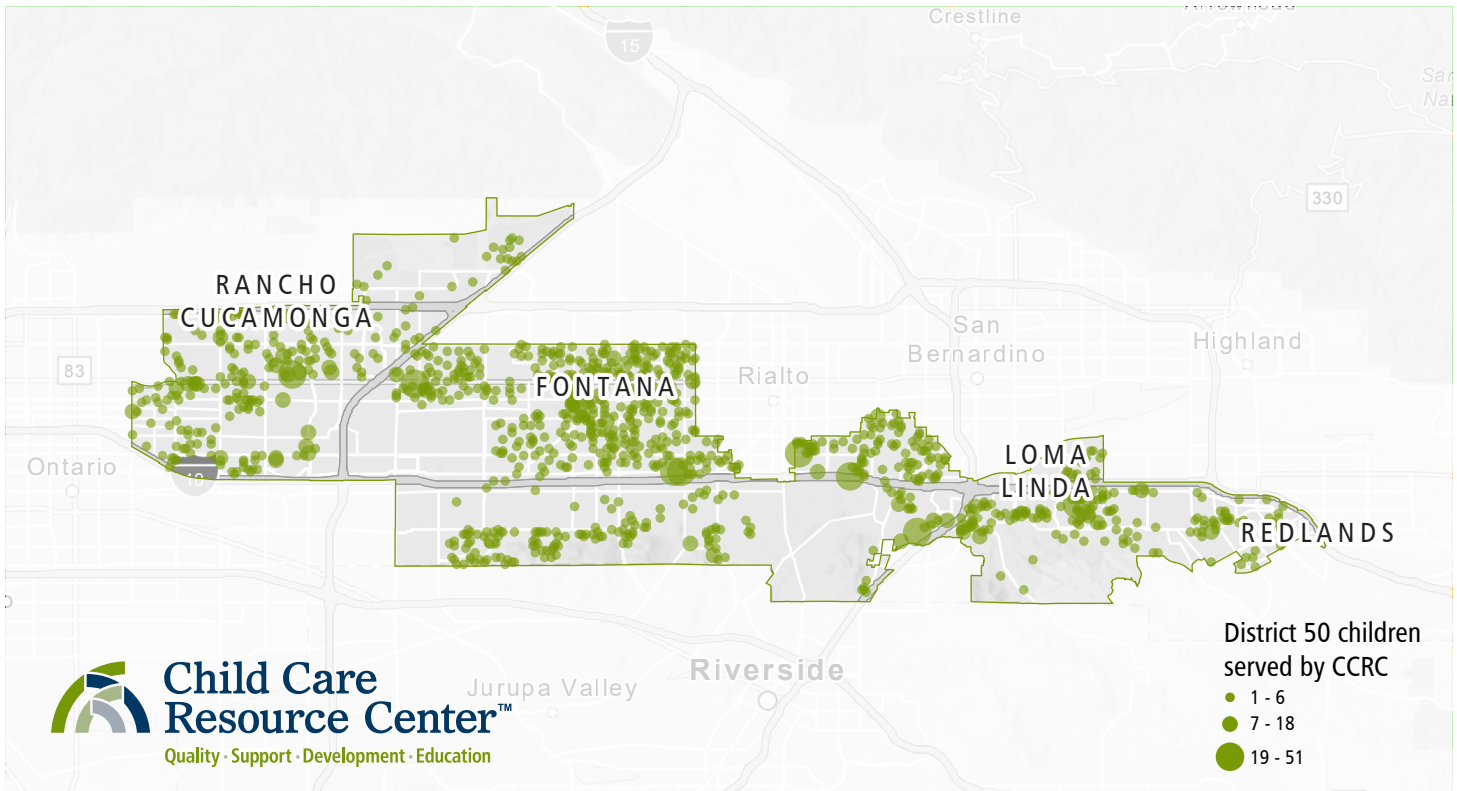
Do you know a parent in need of child care? A family of four earning \$7,900/mo may qualify. Scan the QR code for more information.



Scan the QR code to explore CCRC's legislative data dashboard including charts, maps, and more.



# Robert Garcia · State Assemblymember · District 50



Assemblymember Robert Garcia was elected in 2024 to represent California's 50th Assembly District, which covers parts of San Bernardino and Riverside counties, including Rancho Cucamonga. The Assemblymember represents over 490,000 constitu-

ents. As an educator with over 20 years of experience, Garcia is committed to improving public education and supporting under-resourced communities. Prior to serving in the Assembly, he was a member of

the Etiwanda School District Board of Trustees. Garcia's legislative priorities include fully funding public schools, reducing homelessness, creating good-paying jobs, and supporting small businesses.

**1,920**  
Families served by CCRC

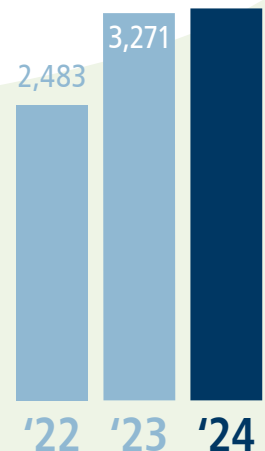
**\$63.3m**  
Total family earnings

**830**  
Providers receiving CCRC  
child care financial assistance

**\$30.3m**  
Invested in community  
child care providers

**3,311**  
children

**+33%**  
More District 50 children  
served by CCRC financial  
assistance, 2022 to 2024



Do you know a parent in need of child care? A family of four earning \$7,900/mo may qualify. Scan the QR code for more information.

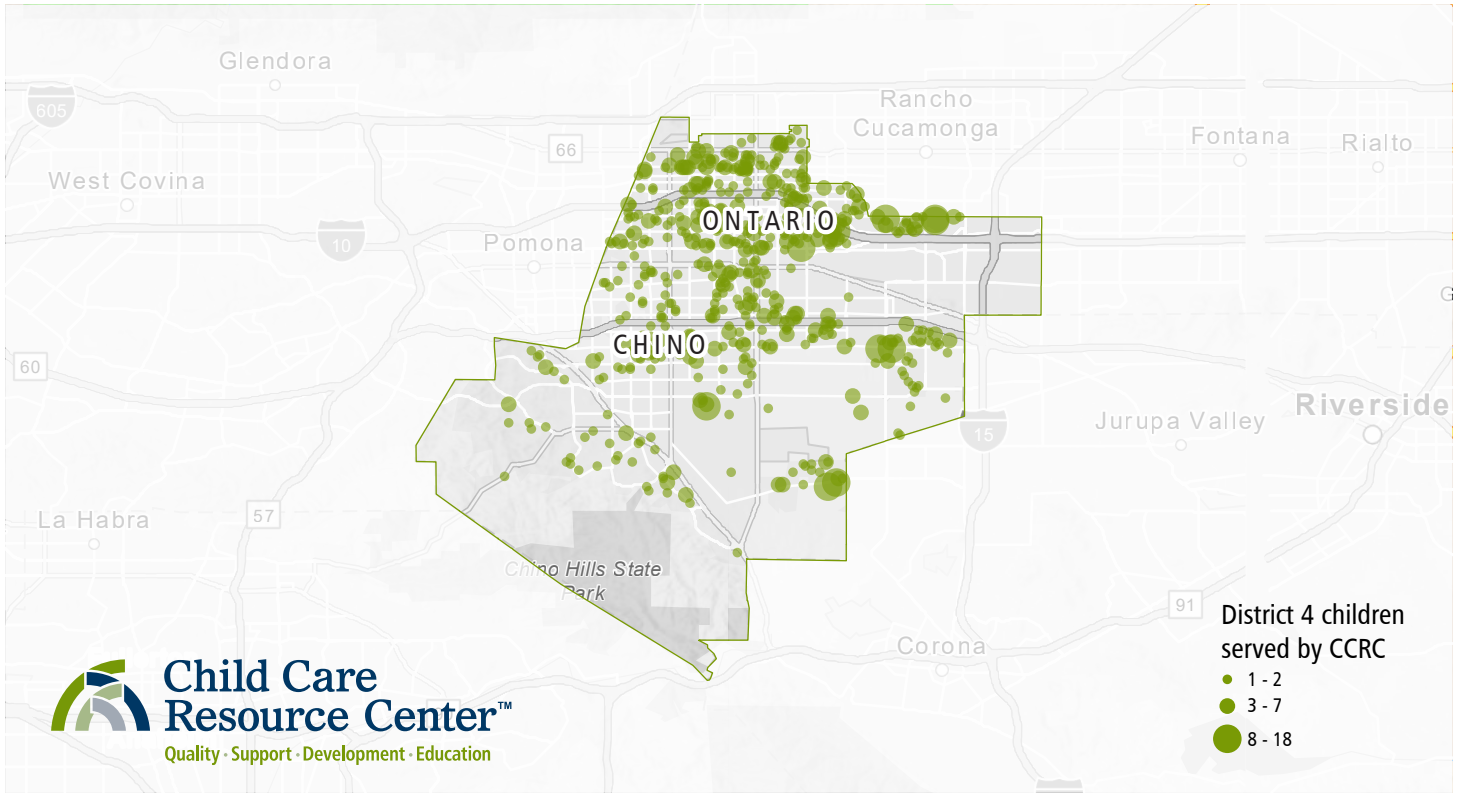


Scan the QR code to explore CCRC's legislative data dashboard including charts, maps, and more.





# Curt Hagman · San Bernardino County Supervisor · District 4



Supervisor Curt Hagman was elected to the San Bernardino County Board of Supervisors in November 2014, representing the Fourth District, which includes the cities of Chino, Chino Hills, Montclair, Ontario, and southern

Upland. The district is home to over 400,000 constituents. A veteran of local government, Hagman has served as a Chino Hills Councilmember and Mayor and spent six years in the California State Assembly.

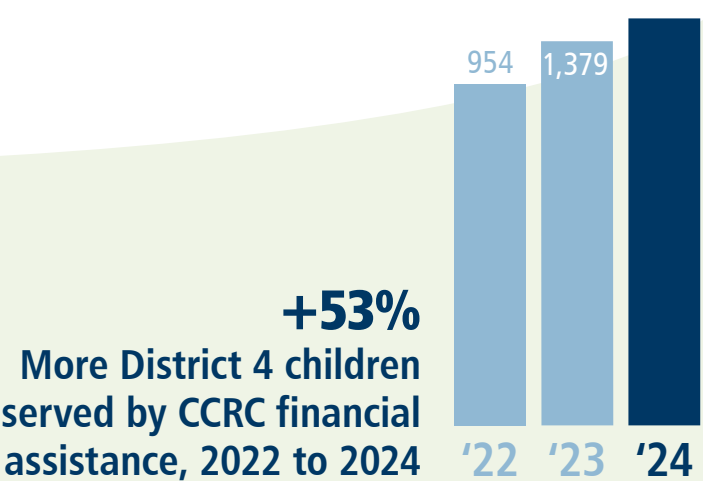
**858**  
Families served by CCRC

**\$28m**  
Total family earnings

**379**  
Providers receiving CCRC  
child care financial assistance

**\$12.1m**  
Invested in community  
child care providers

**1,461**  
children



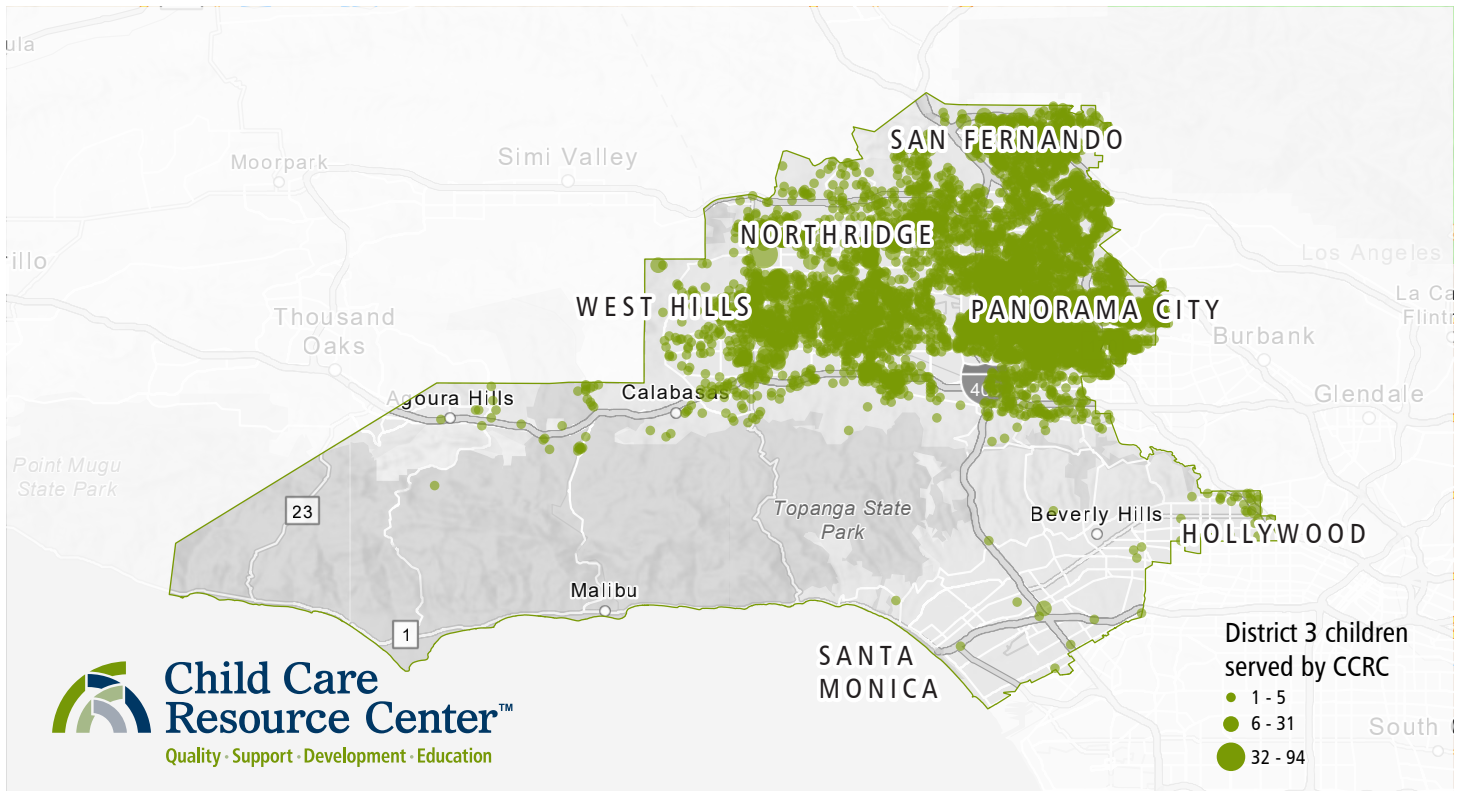
Do you know a parent in need of child care? A family of four earning \$7,900/mo may qualify. Scan the QR code for more information.



Scan the QR code to explore CCRC's legislative data dashboard including charts, maps, and more.



# Lindsey P. Horvath · L.A. County Supervisor · District 3



Supervisor Lindsey P. Horvath was elected in 2022 and represents the 3rd District in the Los Angeles County Board of Supervisors, which includes portions of 10 cities, 26 unincorporated communities and 49 neighbor-

hoods in the City of Los Angeles such as the San Fernando Valley. Supervisor Horvath represents over two million constituents. Prior to joining the Board of Supervisors, she was a City Councilmember and the longest

consecutively serving Mayor for the City of West Hollywood.

**10,632**

Families served by CCRC

**\$373.9m**

Total family earnings

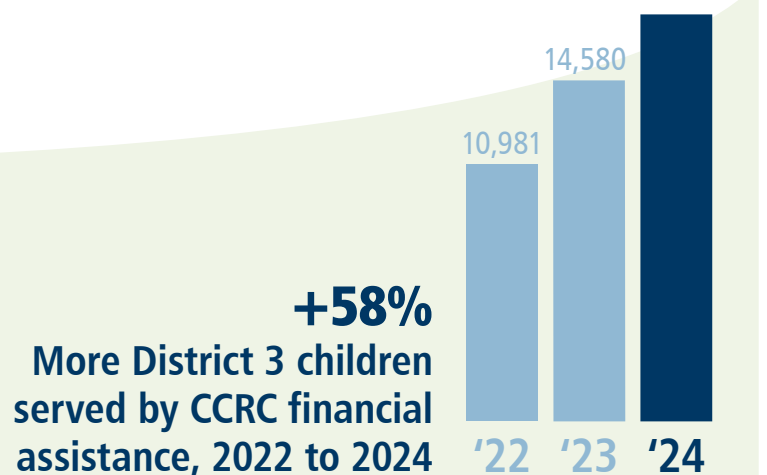
**4,283**

Providers receiving CCRC child care financial assistance

**\$191m**

Invested in community child care providers

**17,402 children**



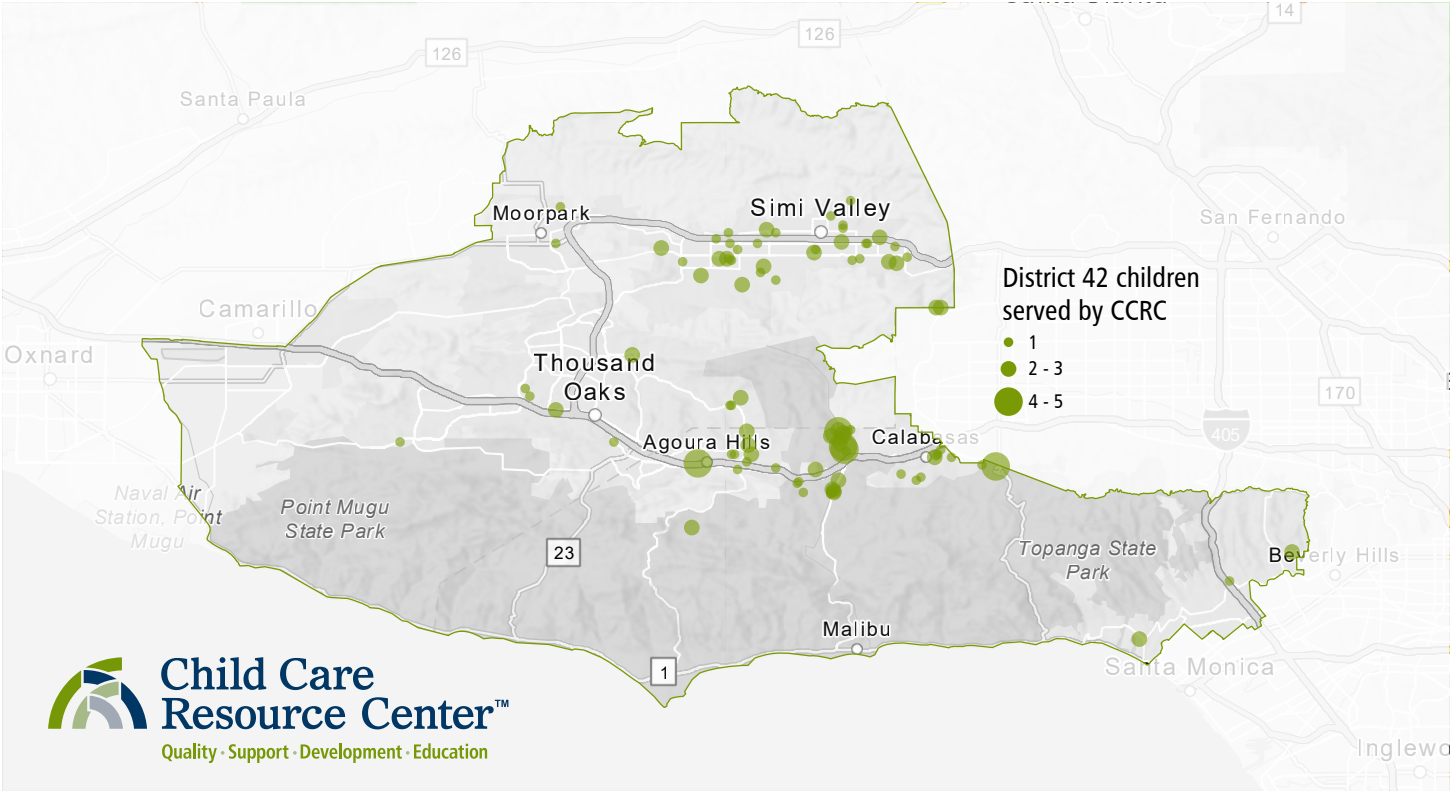
Do you know a parent in need of child care? A family of four earning \$7,900/mo may qualify. Scan the QR code for more information.



Scan the QR code to explore CCRC's legislative data dashboard including charts, maps, and more.



# Jacqui Irwin · State Assemblymember · District 42



Assemblymember Jacqui Irwin was elected in 2014 and represents the 42nd District in the California State Assembly, which includes Agoura Hills, Calabasas, and Hidden Hills. Assemblymember Irwin represents

510,000 constituents. Prior to joining the State Legislature, she was elected to the Thousand Oaks City Council in 2004 and served two terms as mayor of Thousand Oaks.

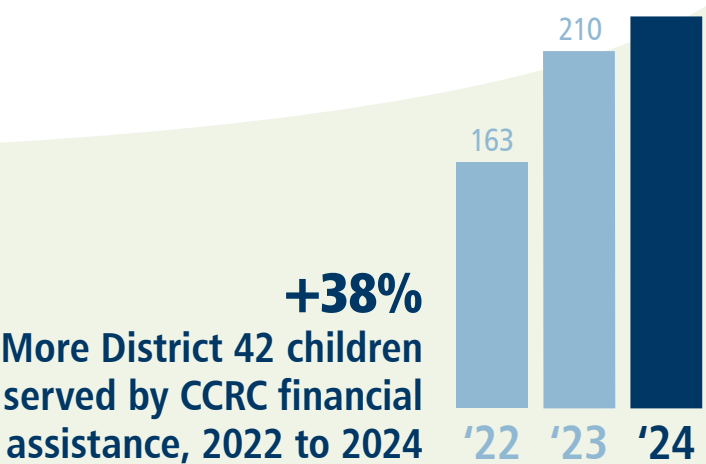
**155**  
Families served by CCRC

**\$4.6m**  
Total family earnings

**94**  
Providers receiving CCRC  
child care financial assistance

**\$1.7m**  
Invested in community  
child care providers

**225**  
children



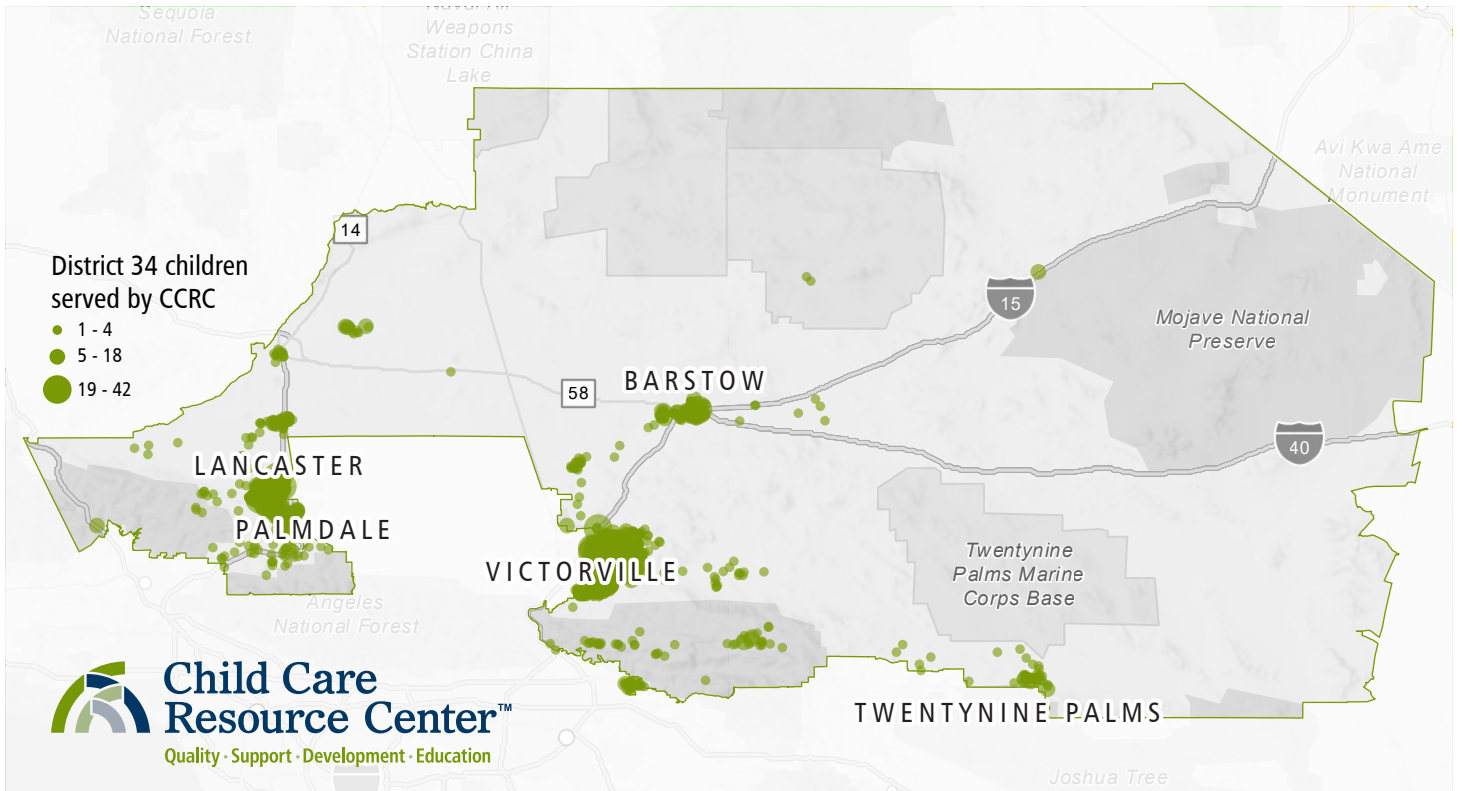
Do you know a parent in need of child care? A family of four earning \$7,900/mo may qualify. Scan the QR code for more information.



Scan the QR code to explore CCRC's legislative data dashboard including charts, maps, and more.



# Tom Lackey · State Assemblymember · District 34



Assemblymember Tom Lackey was elected in 2014 and represents the 34th District in the California State Assembly, which includes Kern, Los Angeles, and San Bernardino County. Assemblymember Lackey represents 520,000 constitu-

ents. Prior to joining the State Legislature, he served on the Palmdale Elementary School District Board of Trustees and the Palmdale City Council.

**3,905**

Families served by CCRC

**\$149.1m**

Total family earnings

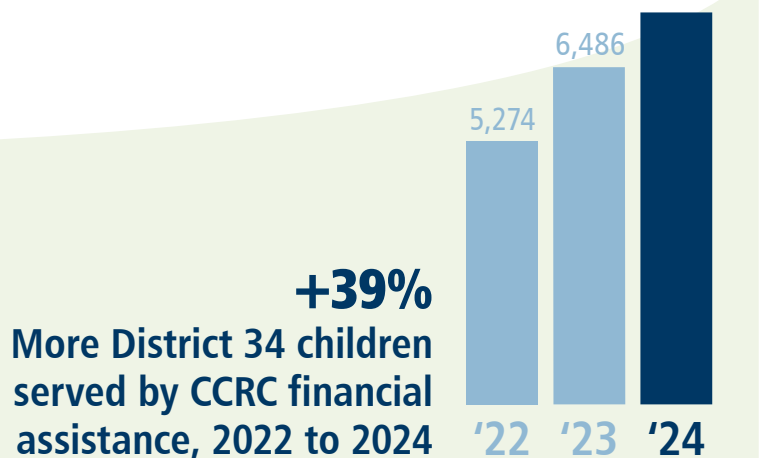
**2,255**

Providers receiving CCRC child care financial assistance

**\$64.4m**

Invested in community child care providers

**7,325**  
children



Do you know a parent in need of child care? A family of four earning \$7,900/mo may qualify. Scan the QR code for more information.

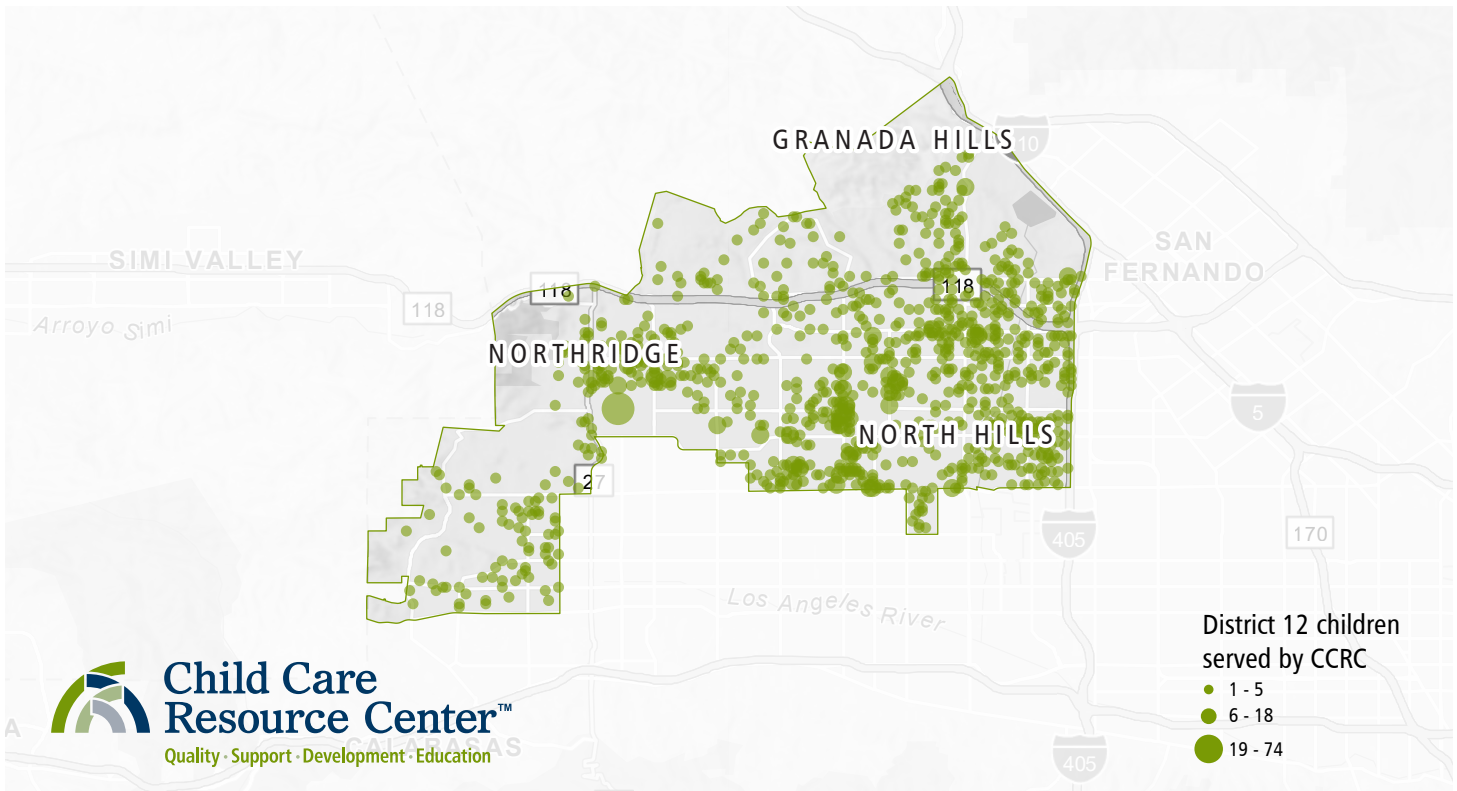


Scan the QR code to explore CCRC's legislative data dashboard including charts, maps, and more.





# John Lee · L.A. City Council · District 12



Councilmember John Lee was elected in 2019 following a special election and was re-elected in 2020 to serve his first full term. He represents the 12th District in the Los Angeles City

Council which includes Northridge, Chatsworth, Porter Ranch, Granada Hills, North Hills, Sherwood Forest, and West Hills. Councilmember Lee represents 260,000 constituents. He

has been a CD12 resident for over 40 years and found his passion for public service at an early age when he first began volunteering for local nonprofits while in middle school.

**1,736**  
Families served by CCRC

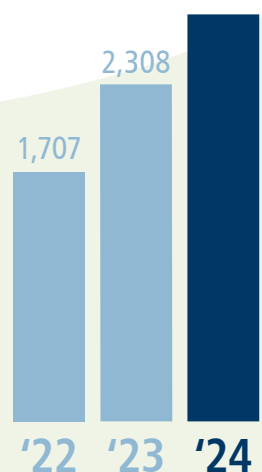
**\$58.9m**  
Total family earnings

**702**  
Providers receiving CCRC  
child care financial assistance

**\$40.9m**  
Invested in community  
child care providers

**2,787**  
children

**+63%**  
More District 12 children  
served by CCRC financial  
assistance, 2022 to 2024



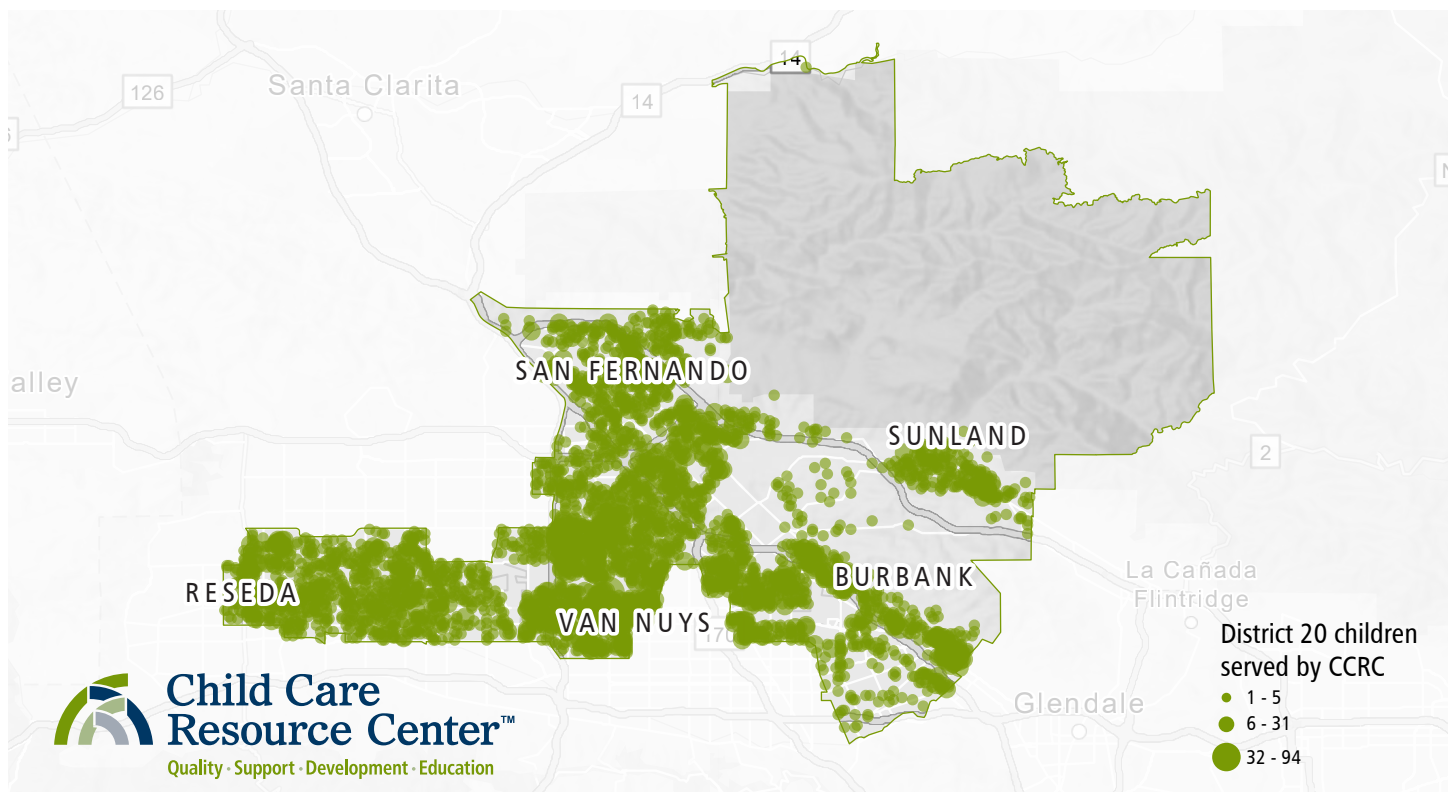
Do you know a parent in need of child care? A family of four earning \$7,900/mo may qualify. Scan the QR code for more information.



Scan the QR code to explore CCRC's legislative data dashboard including charts, maps, and more.



# Caroline Menjivar · State Senator · District 20



Senator Caroline Menjivar was elected in 2022 and represents the 20th District in the California State Senate, which includes Burbank, Panorama City, Van Nuys, Arleta, Sun Valley, Pacoima, San Fernando, Sylmar,

Sunland-Tujunga, Lake Balboa, Reseda, Canoga Park, and Winnetka. Senator Menjivar represents 920,000 constituents. She is a first-generation American daughter of Salvadorean immigrants and was born and raised

in the very communities she now represents.

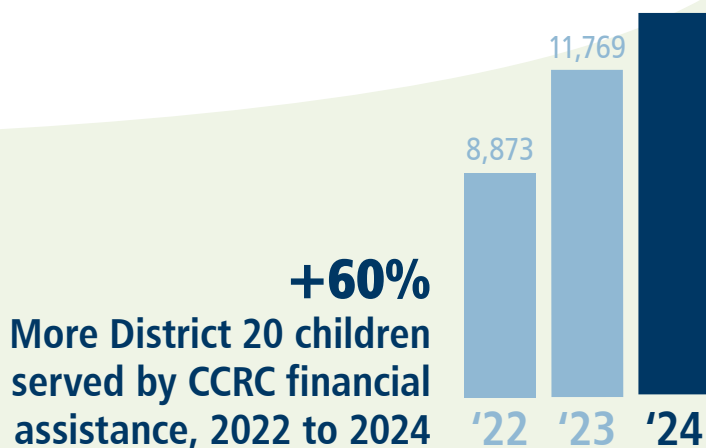
**8,525**  
Families served by CCRC

**\$301.2m**  
Total family earnings

**3,466**  
Providers receiving CCRC  
child care financial assistance

**\$152.4m**  
Invested in community  
child care providers

**14,220**  
children



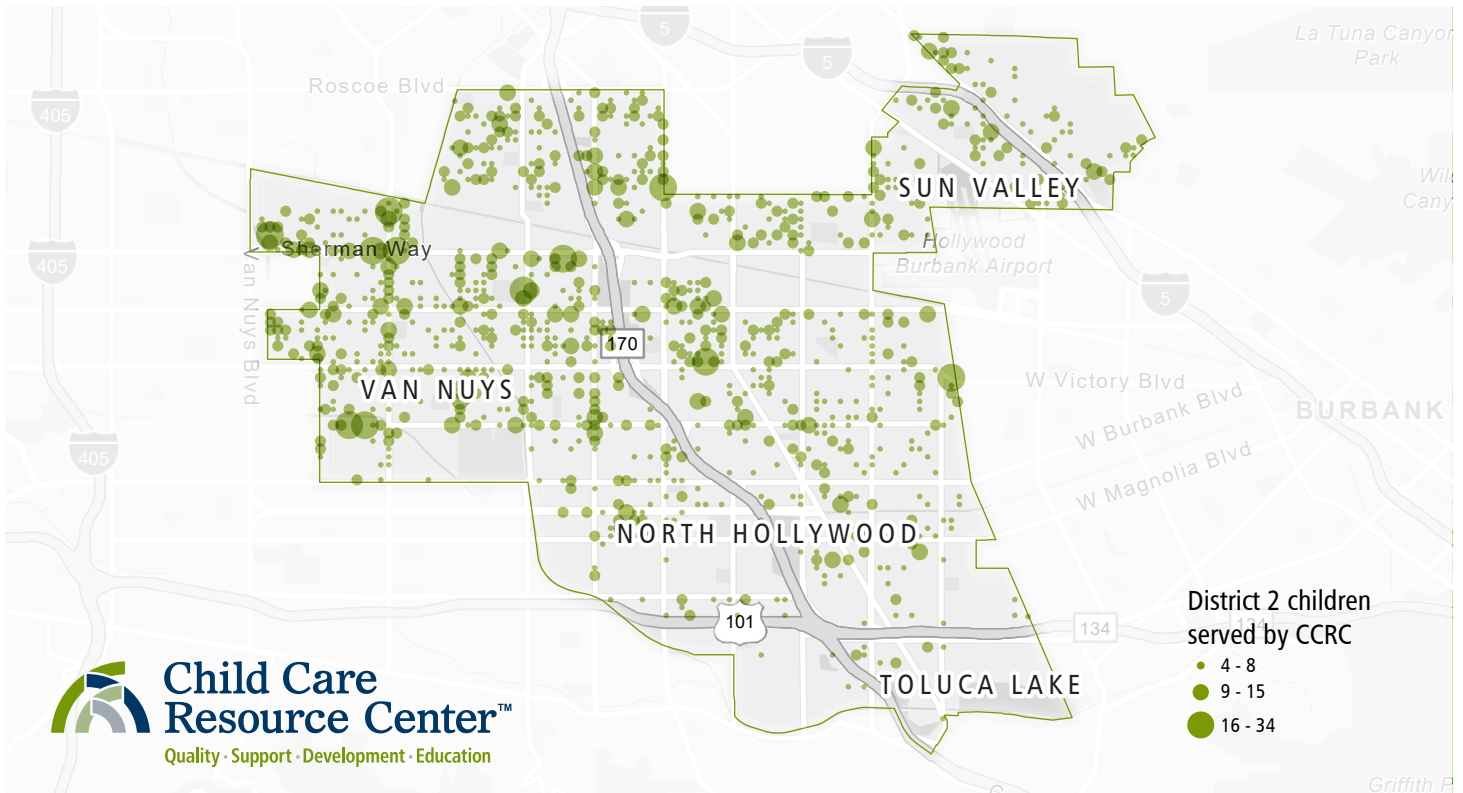
Do you know a parent in need of child care? A family of four earning \$7,900/mo may qualify. Scan the QR code for more information.



Scan the QR code to explore CCRC's legislative data dashboard including charts, maps, and more.



# Adrin Nazarian · L.A. City Council · District 2



Councilmember Nazarian was elected in 2024 and represents the 2nd District in the Los Angeles City Council which includes North Hollywood, Toluca Lake, Studio City, Sun Valley, Valley Village, Van Nuys

and Valley Glen. Councilmember Nazarian represents 250,000 constituents. Prior to joining the City Council, he represented the 46th district in the California State Assembly from 2012 to 2022.

**2,584**  
Families served by CCRC

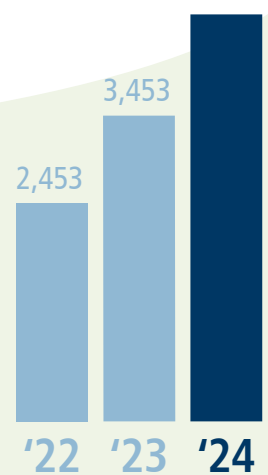
**\$73.8m**  
Total family earnings

**946**  
Providers receiving CCRC  
child care financial assistance

**\$53.3m**  
Invested in community  
child care providers

**4,255**  
children

**+73%**  
More District 2 children  
served by CCRC financial  
assistance, 2022 to 2024



Do you know a parent in need of child care? A family of four earning \$7,900/mo may qualify. Scan the QR code for more information.



Scan the QR code to explore CCRC's legislative data dashboard including charts, maps, and more.



# Jay Obernolte · Congressman · District 23



Congressman Jay Obernolte was elected in 2020 and represents the 23rd Congressional District, which includes portions of Kern, Los Angeles, and San Bernardino Counties. The district features

hundreds of miles of national forest, wilderness, and parkland and is near the heart of America's growing space industry. Congressman Obernolte represents over 768,000 constituents. Before joining Congress, he

served in the California State Assembly and has a background in technology and business.

**5,486**

Families served by CCRC

**\$164.2m**

Total family earnings

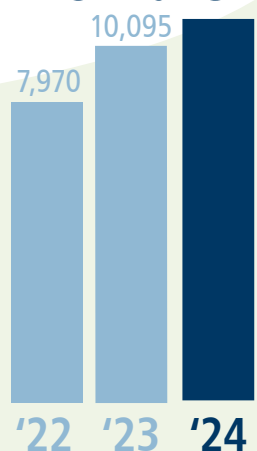
**2,960**

Providers receiving CCRC child care financial assistance

**\$88.9m**

Invested in community child care providers

**10,499**  
children



**+32%**

More District 23 children served by CCRC financial assistance, 2022 to 2024



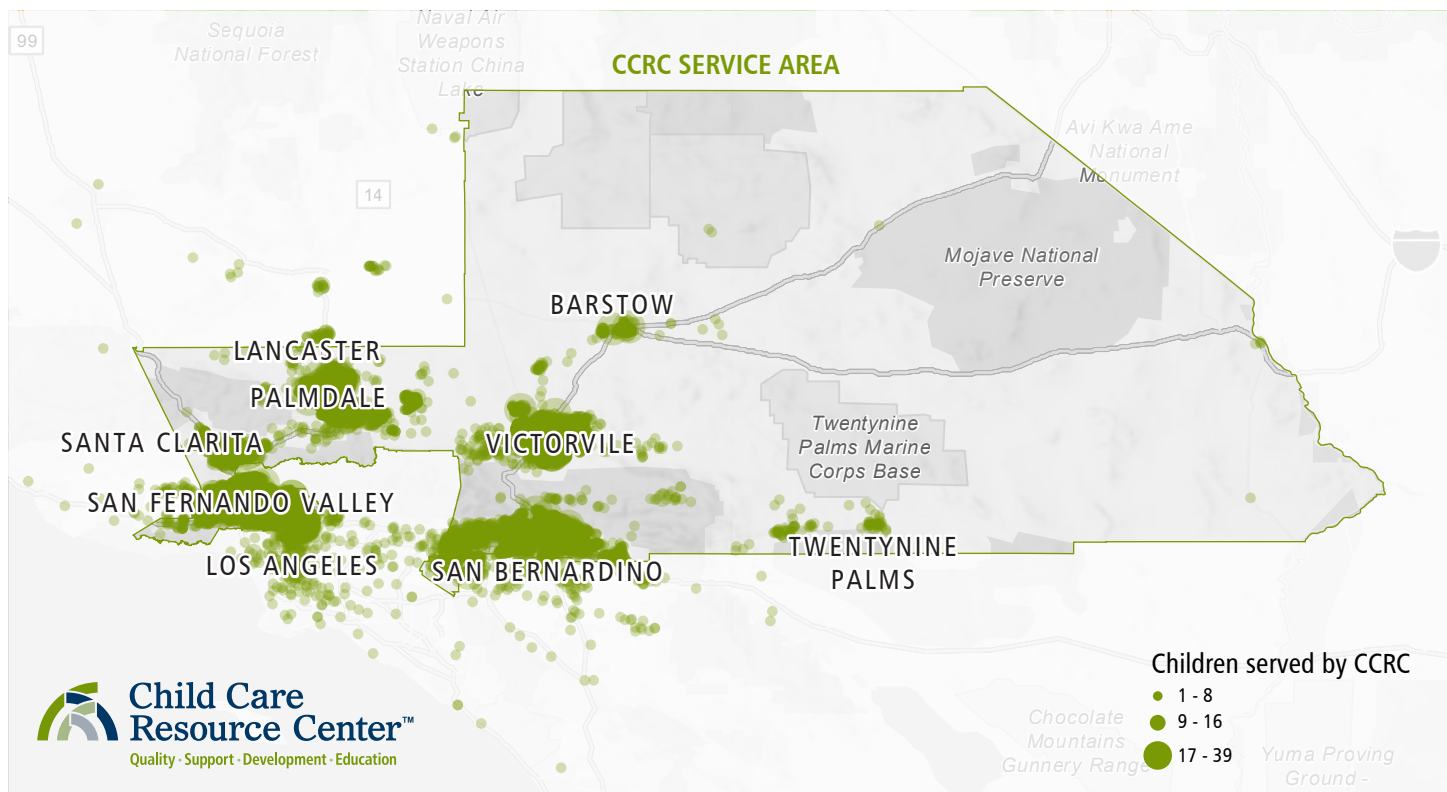
Do you know a parent in need of child care? A family of four earning \$7,900/mo may qualify. Scan the QR code for more information.



Scan the QR code to explore CCRC's legislative data dashboard including charts, maps, and more.



# Alex Padilla · Senator, State of California



U.S. Senator Alex Padilla was elected in 2022 to the United States Senate to represent the State of California. He began serving in January 2021 after being appointed to fill the vacancy created by the election of

Vice President Kamala Harris. Senator Padilla is the first Latino to represent California in the U.S. Senate. He previously served as California's Secretary of State from 2015-2021, as state senator from 2006 to 2014, and

as councilmember of the Los Angeles City Council from 1999 to 2007.

**37,908**

Families served by CCRC

**\$1.3b**

Total family earnings

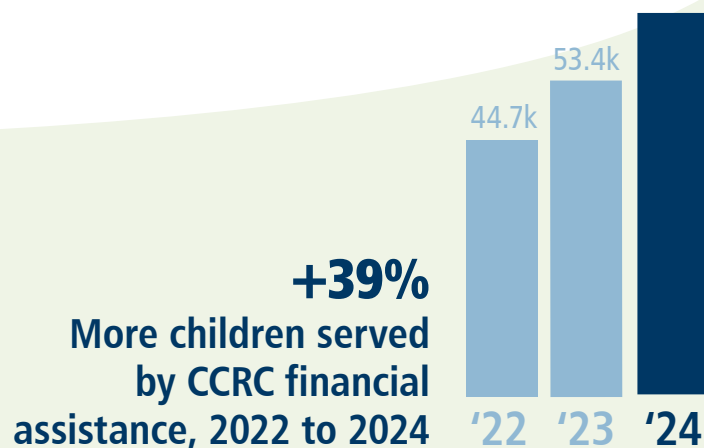
**18,139**

Providers receiving CCRC child care financial assistance

**\$642.8m**

Invested in community child care providers

**66,308**  
children



Do you know a parent in need of child care? A family of four earning \$7,900/mo may qualify. Scan the QR code for more information.

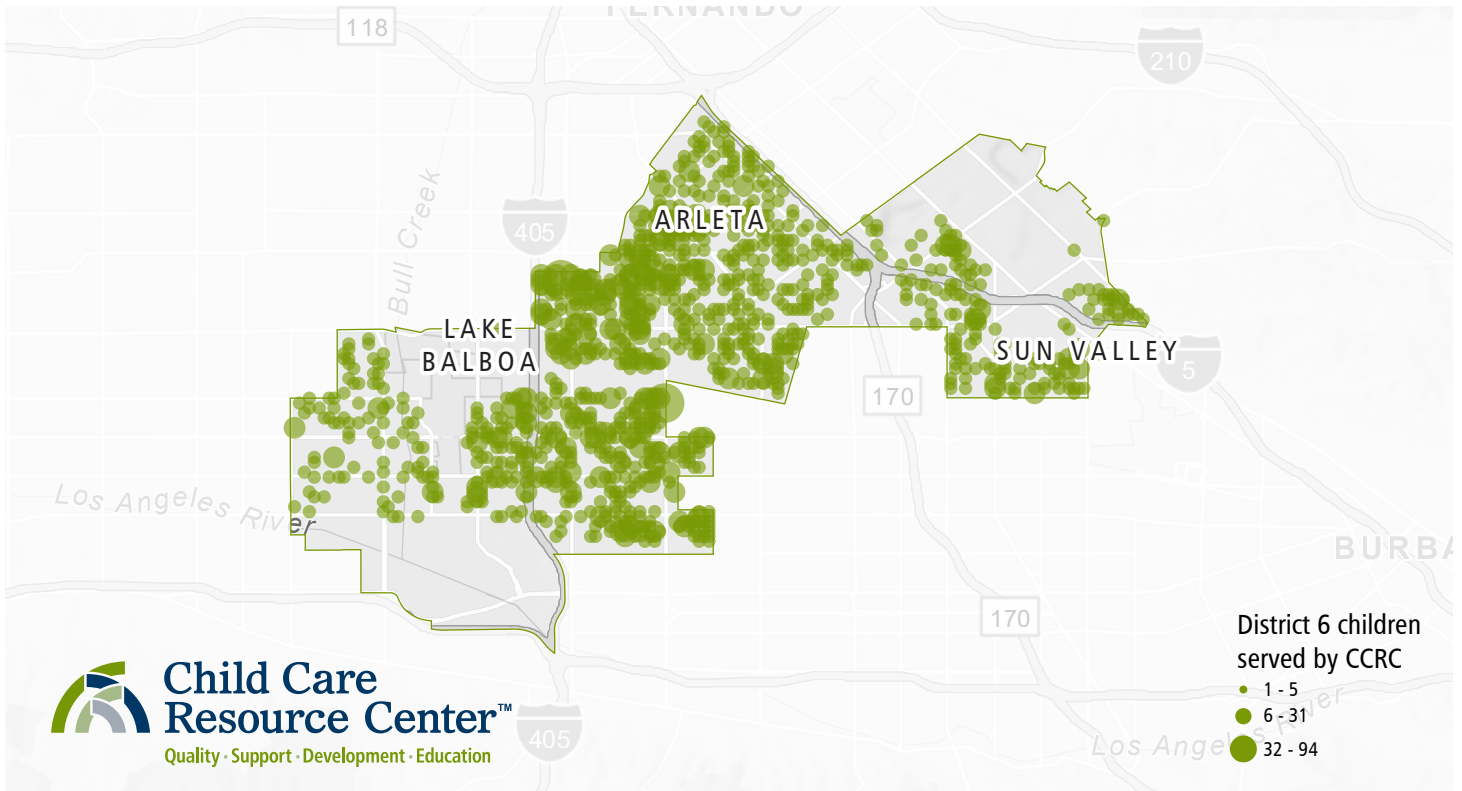


Scan the QR code to explore CCRC's legislative data dashboard including charts, maps, and more.





# Imelda Padilla · L.A. City Council · District 6



Councilwoman Imelda Padilla was elected in 2023 following a special election and was re-elected in 2024 to serve her first full term. She represents the 6th District in the Los Angeles City Council which includes

Arleta, Lake Balboa, North Hollywood, North Hills, Panorama City, Van Nuys, and Sun Valley. Councilwoman Padilla represents 260,000 constituents. A lifelong resident of the Valley, she brings over

20 years of community organizing and advocacy experience to City Hall.

**2,735**  
Families served by CCRC

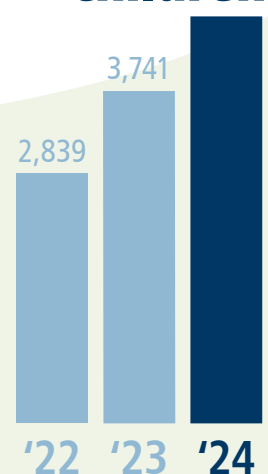
**\$106.6m**  
Total family earnings

**1,048**  
Providers receiving CCRC  
child care financial assistance

**\$38.3m**  
Invested in community  
child care providers

**4,599**  
children

**+62%**  
More District 6 children  
served by CCRC financial  
assistance, 2022 to 2024



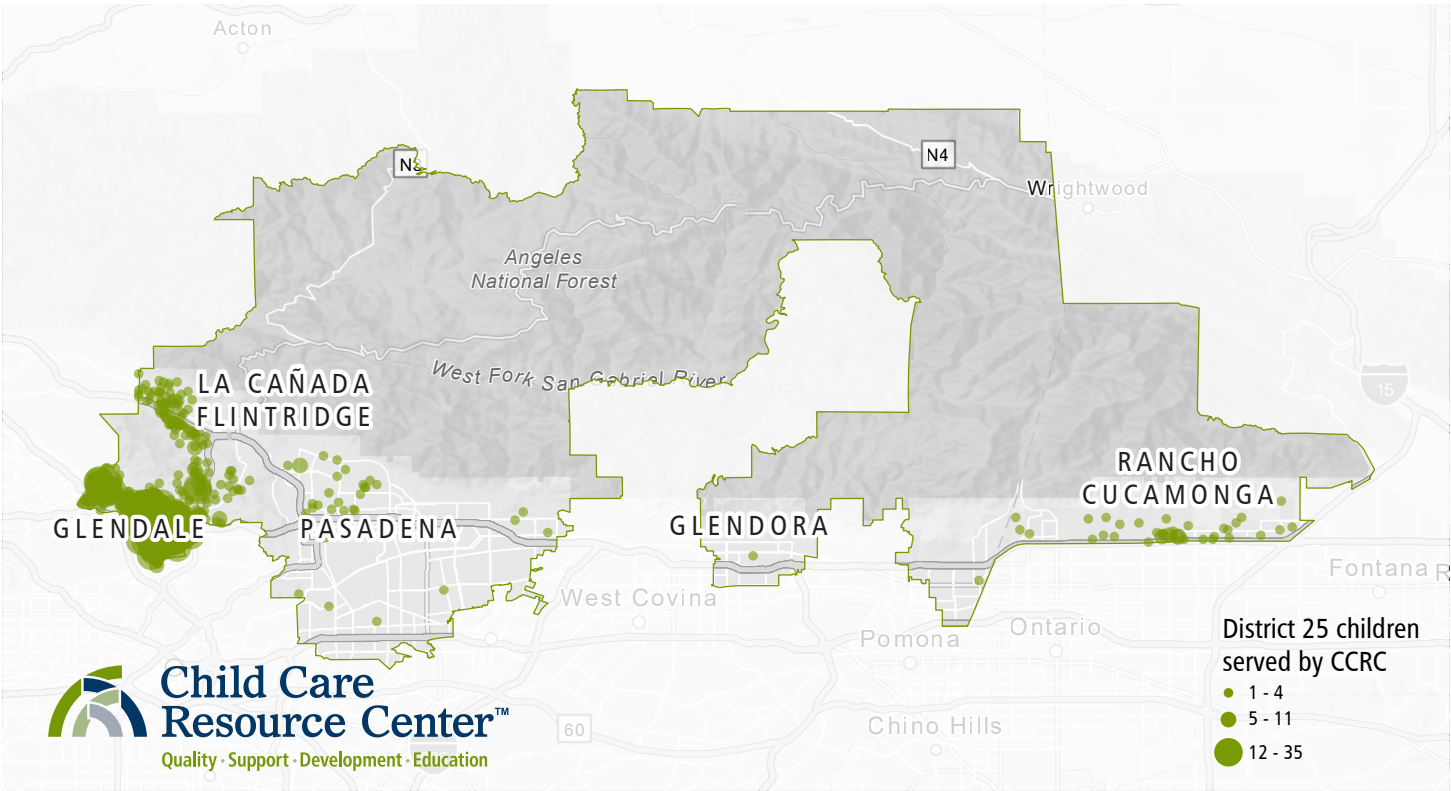
Do you know a parent in need of child care? A family of four earning \$7,900/mo may qualify. Scan the QR code for more information.



Scan the QR code to explore CCRC's legislative data dashboard including charts, maps, and more.



# Sasha Renée Pérez · State Senator · District 25



Senator Sasha Renée Pérez was elected in 2024 and represents the 25th District in the California State Senate, which includes a portion of Burbank and Glendale in Los Angeles County, as well a part of Rancho

Cucamonga in San Bernardino County. Senator Pérez represents over one million constituents. Prior to joining the State Legislature, she was elected to Alhambra City Council in 2020 and served as Mayor.

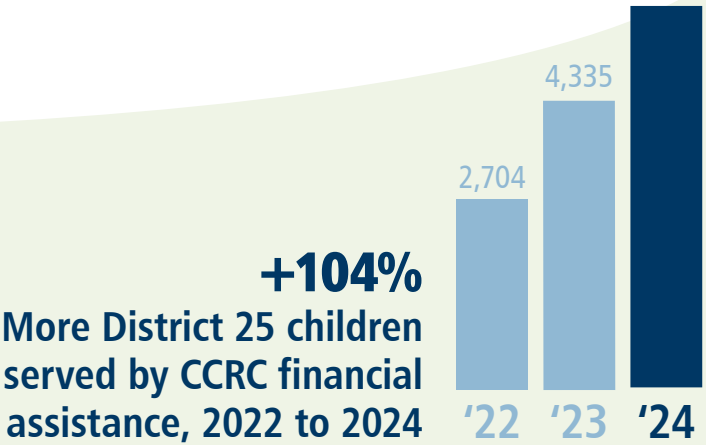
**3,356**  
Families served by CCRC

**\$75m**  
Total family earnings

**884**  
Providers receiving CCRC  
child care financial assistance

**\$69.2m**  
Invested in community  
child care providers

**5,509**  
children



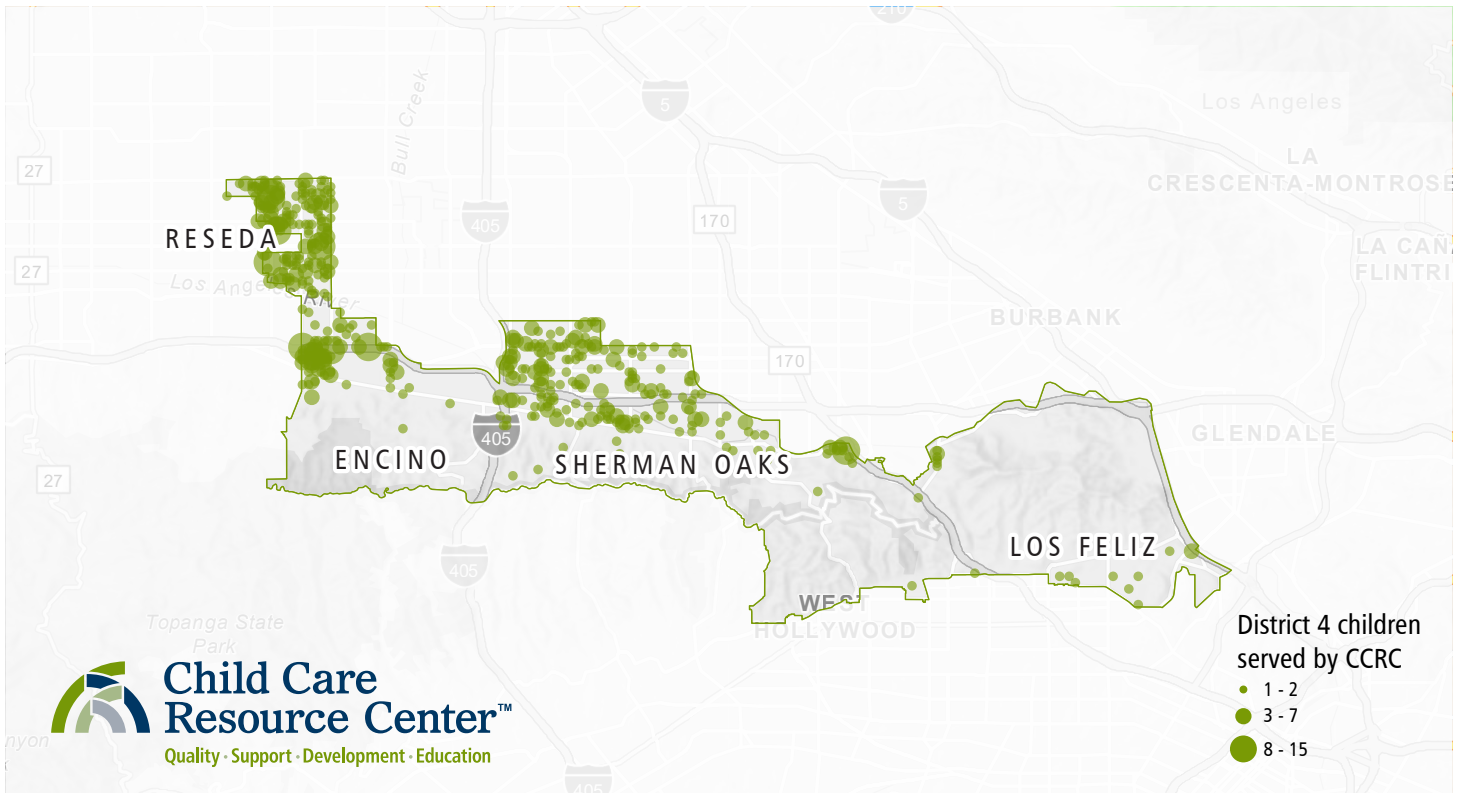
Do you know a parent in need of child care? A family of four earning \$7,900/mo may qualify. Scan the QR code for more information.



Scan the QR code to explore CCRC's legislative data dashboard including charts, maps, and more.



# Nithya Raman · L.A. City Council · District 4



Councilwoman Nithya Raman was elected in 2020 and represents the 4th District in the Los Angeles City Council which includes parts of Silver Lake, Los Feliz, Hollywood Hills, Sherman Oaks, Encino, and parts of

Studio City, Van Nuys, and Reseda. Councilwoman Raman represents 270,000 constituents. She is an urban planner, a graduate of Harvard and MIT, a working mother, and an immigrant to America.

**872**

Families served by CCRC

**\$26.8m**

Total family earnings

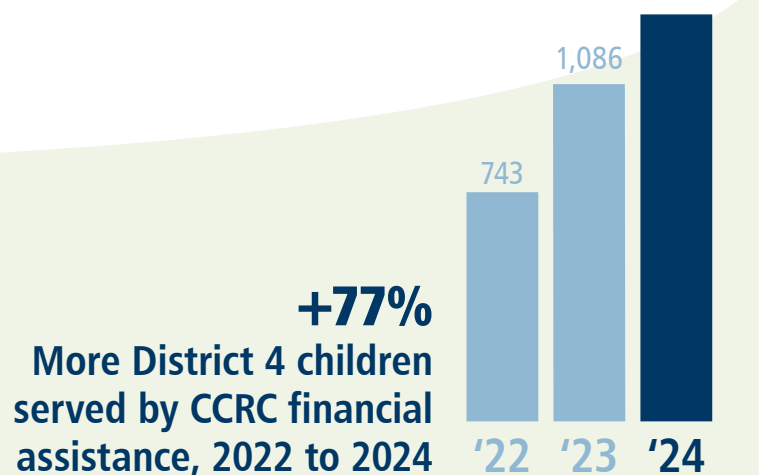
**271**

Providers receiving CCRC child care financial assistance

**\$8.8m**

Invested in community child care providers

**1,314**  
children



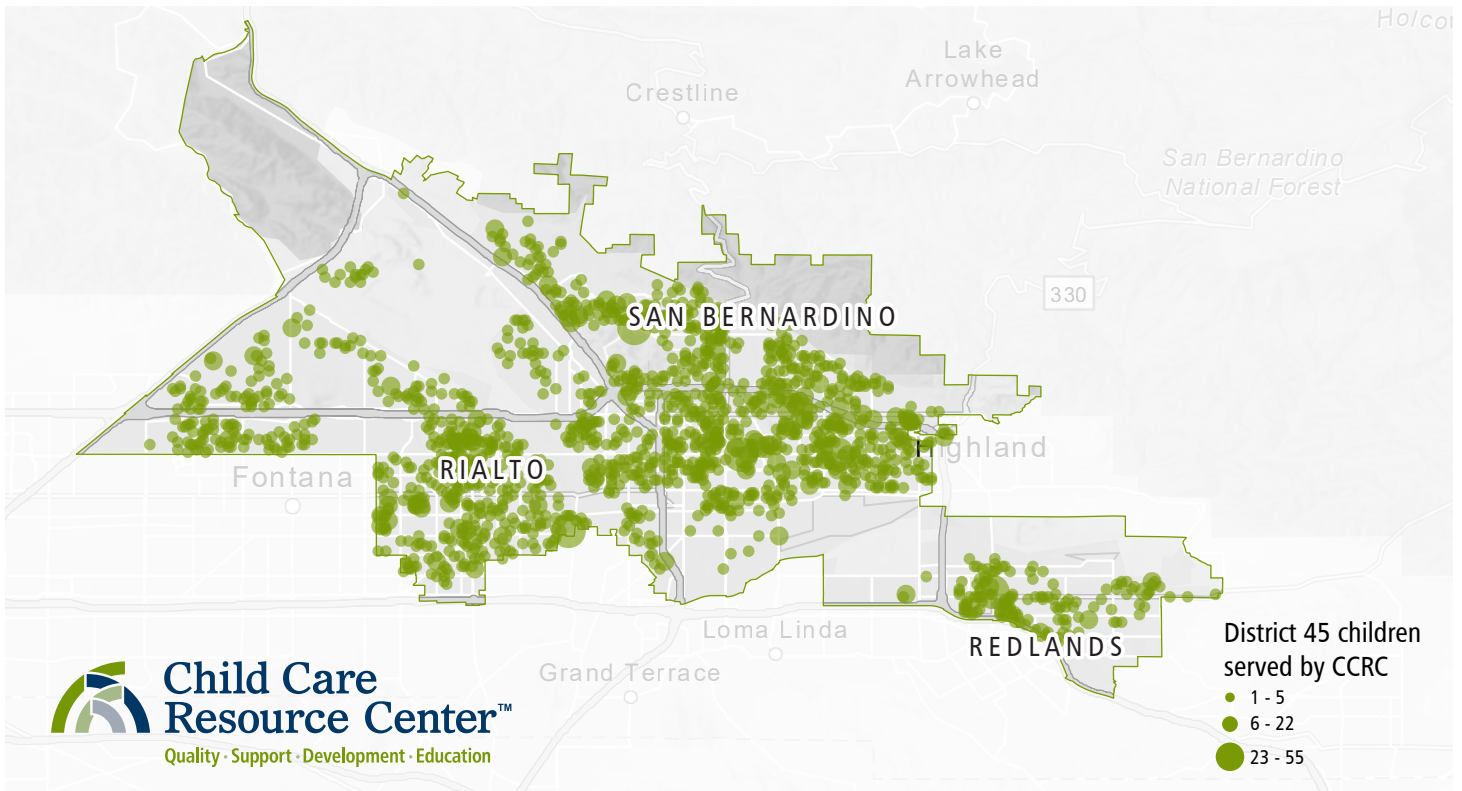
Do you know a parent in need of child care? A family of four earning \$7,900/mo may qualify. Scan the QR code for more information.



Scan the QR code to explore CCRC's legislative data dashboard including charts, maps, and more.



# James C. Ramos · State Assemblymember · District 45



Assemblymember James C. Ramos was elected in 2018 to represent California's 45th Assembly District, which includes the cities of Fontana, Highland, Redlands, Rialto, and San Bernardino. Representing over 490,000 constituents, Ramos is a

lifelong resident of the San Manuel Indian Reservation and the first Native American elected to the California State Legislature. He has held numerous leadership roles, including Chair of the Assembly Budget Subcommittee on Public

Safety and the California Legislative Native American Caucus. Before his legislative career, Ramos served on the San Bernardino County Board of Supervisors.

**2,660**  
Families served by CCRC

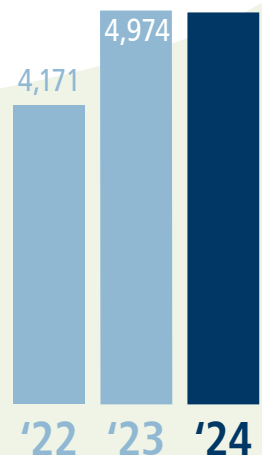
**\$87.3m**  
Total family earnings

**1,413**  
Providers receiving CCRC  
child care financial assistance

**\$43m**  
Invested in community  
child care providers

**4,945**  
children

**+19%**  
More District 45 children  
served by CCRC financial  
assistance, 2022 to 2024



Do you know a parent in need of child care? A family of four earning \$7,900/mo may qualify. Scan the QR code for more information.

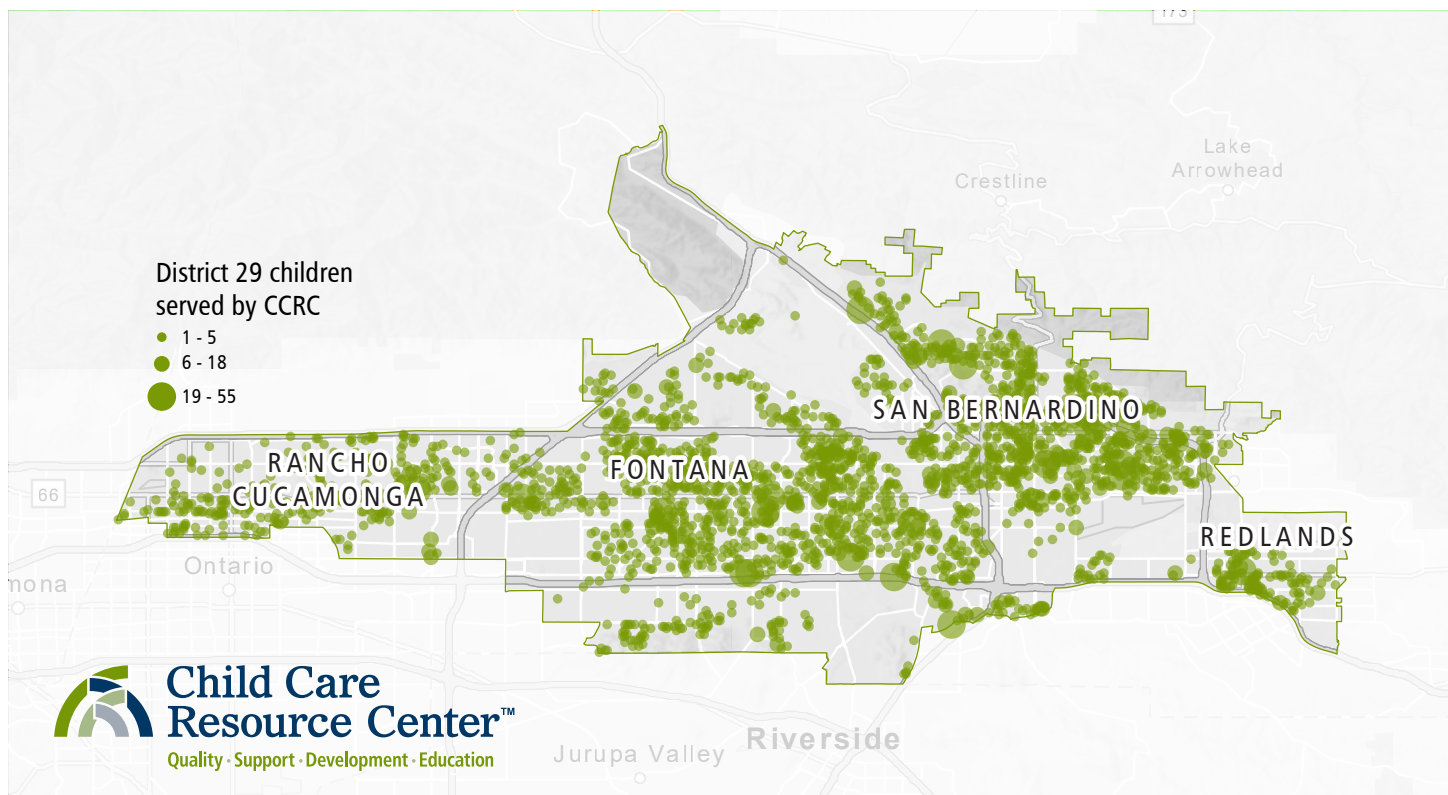


Scan the QR code to explore CCRC's legislative data dashboard including charts, maps, and more.





# Eloise Gómez Reyes · State Senator · District 29



Senator Eloise Reyes was elected in 2024 and represents the 29th District in the California State Senate, which includes the cities of San Bernardino, Rialto, and Colton in San Bernardino County. Senator Reyes represents over

943,000 constituents. Prior to joining the State Legislature, she served as the Majority Leader of the California State Assembly from 2020 to 2023, becoming the first Latina and only the fourth woman to hold the position.

**4,324**

Families served by CCRC

**\$142m**

Total family earnings

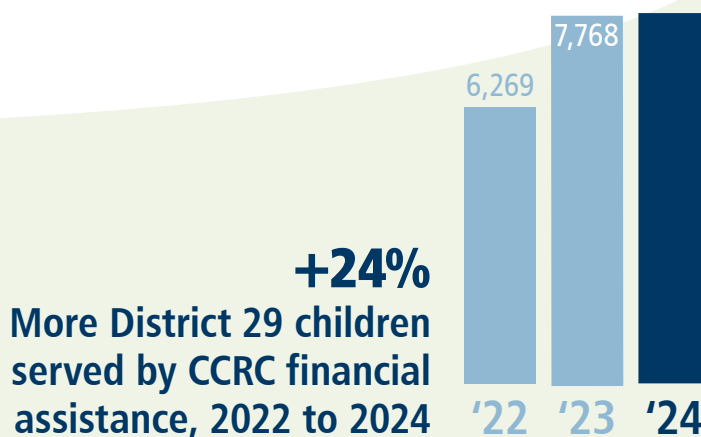
**2,176**

Providers receiving CCRC child care financial assistance

**\$70.6m**

Invested in community child care providers

**7,797**  
children



Do you know a parent in need of child care? A family of four earning \$7,900/mo may qualify. Scan the QR code for more information.

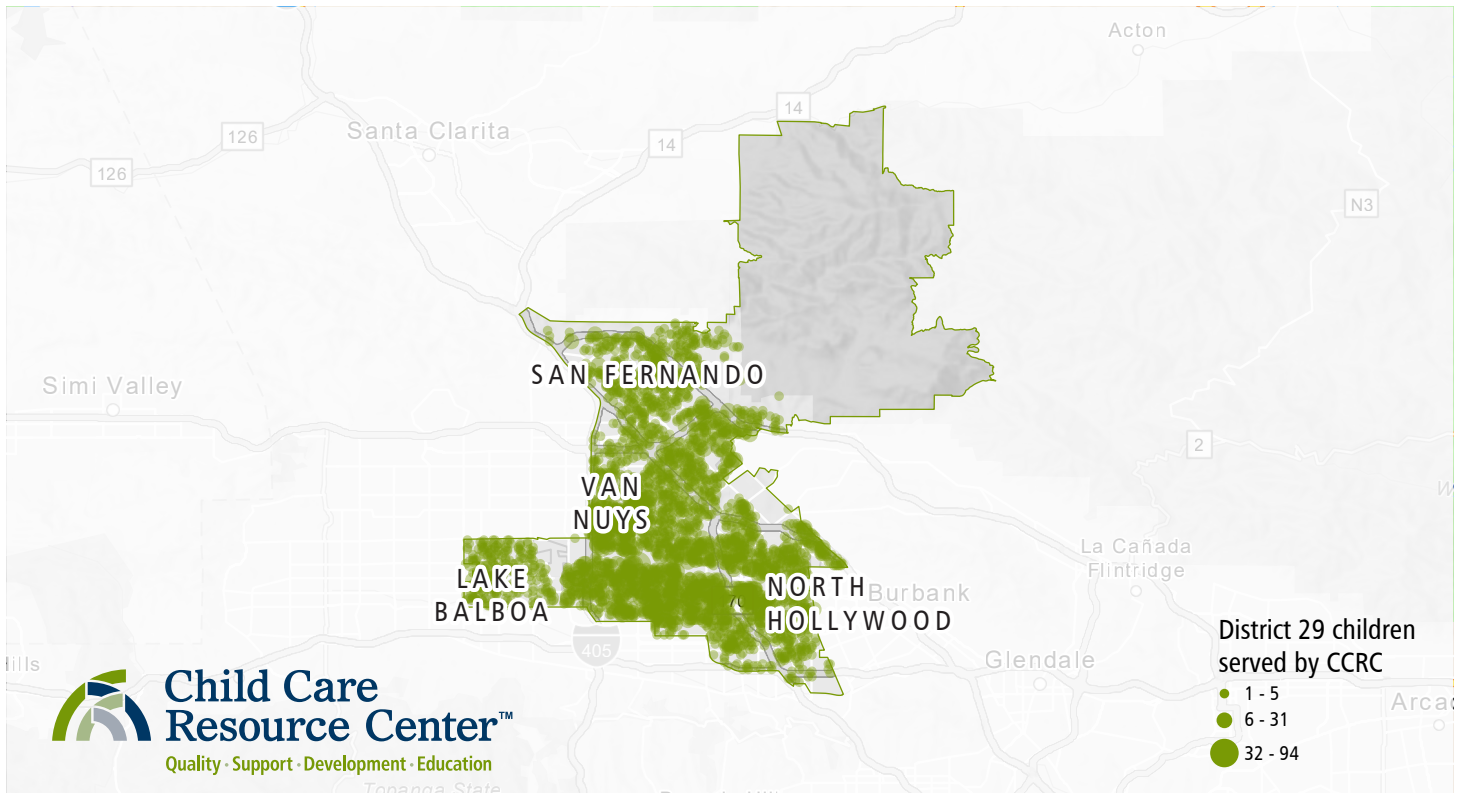


Scan the QR code to explore CCRC's legislative data dashboard including charts, maps, and more.





# Luz Rivas · Congresswoman · District 29



Congresswoman Luz Rivas was elected in 2025 and represents the 29th District in the U.S. House of Representatives, which includes Mission Hills, North Hills, North

Hollywood, Pacoima, Panorama City, Reseda, San Fernando, Sun Valley, Sylmar, Toluca Lake, Valley Glen, Valley Village, and Van Nuys. Congresswoman Rivas represents

720,000 constituents. Prior to joining Congress, she represented the 43rd district in the California State Assembly for six years.

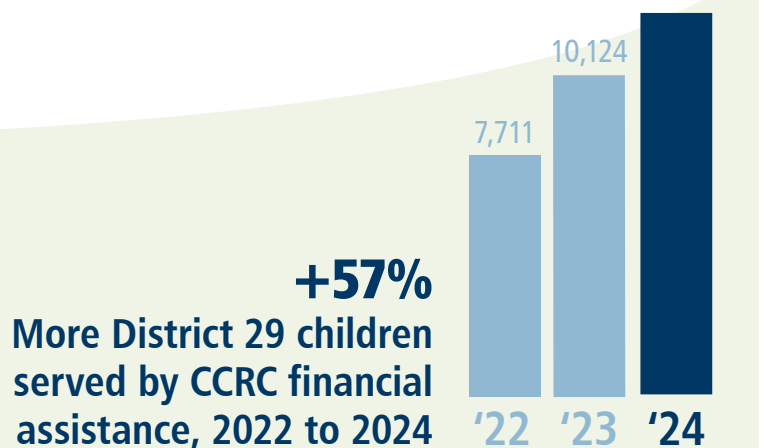
**7,218**  
Families served by CCRC

**\$249.6m**  
Total family earnings

**2,998**  
Providers receiving CCRC  
child care financial assistance

**\$123m**  
Invested in community  
child care providers

**12,082**  
children



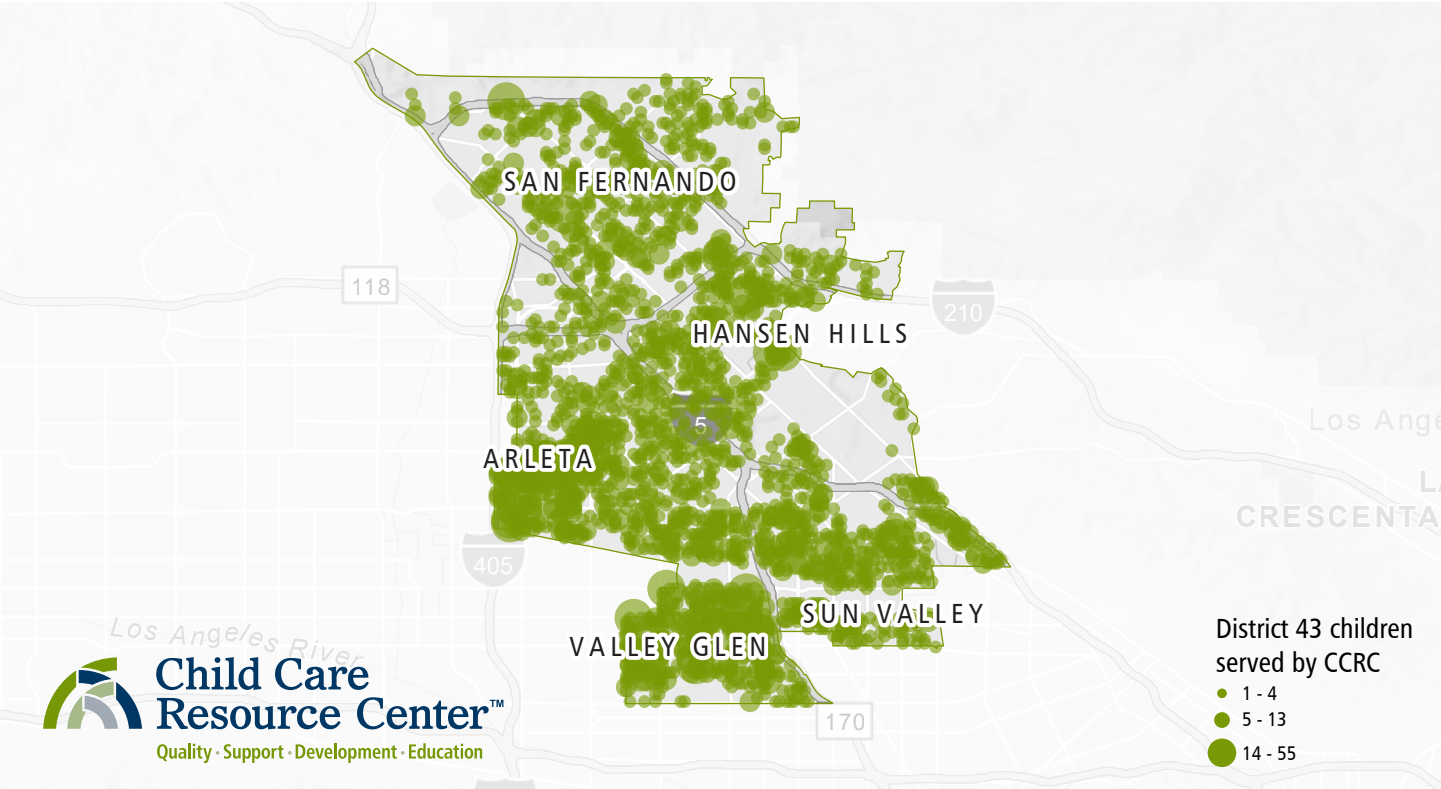
Do you know a parent in need of child care? A family of four earning \$7,900/mo may qualify. Scan the QR code for more information.



Scan the QR code to explore CCRC's legislative data dashboard including charts, maps, and more.



# Celeste Rodriguez · State Assemblymember · District 43



Assemblymember Celeste Rodriguez was elected in 2024 and represents the 43rd District in the California State Assembly, which includes all of San Fernando city, Rancho Cascades, Sylmar, Pacoima, Arleta, Panorama

City, Sun Valley and Valley Glen. Assemblymember Rodriguez represents 490,000 constituents. Prior to joining the State Legislature, she was elected to the San Fernando City Council in 2020 and became Mayor in 2022.

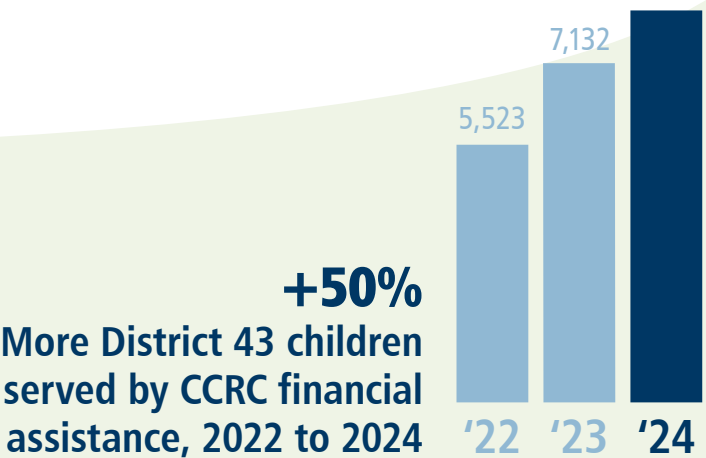
**4,834**  
Families served by CCRC

**\$165.5m**  
Total family earnings

**2,186**  
Providers receiving CCRC  
child care financial assistance

**\$88.3m**  
Invested in community  
child care providers

**8,289**  
children



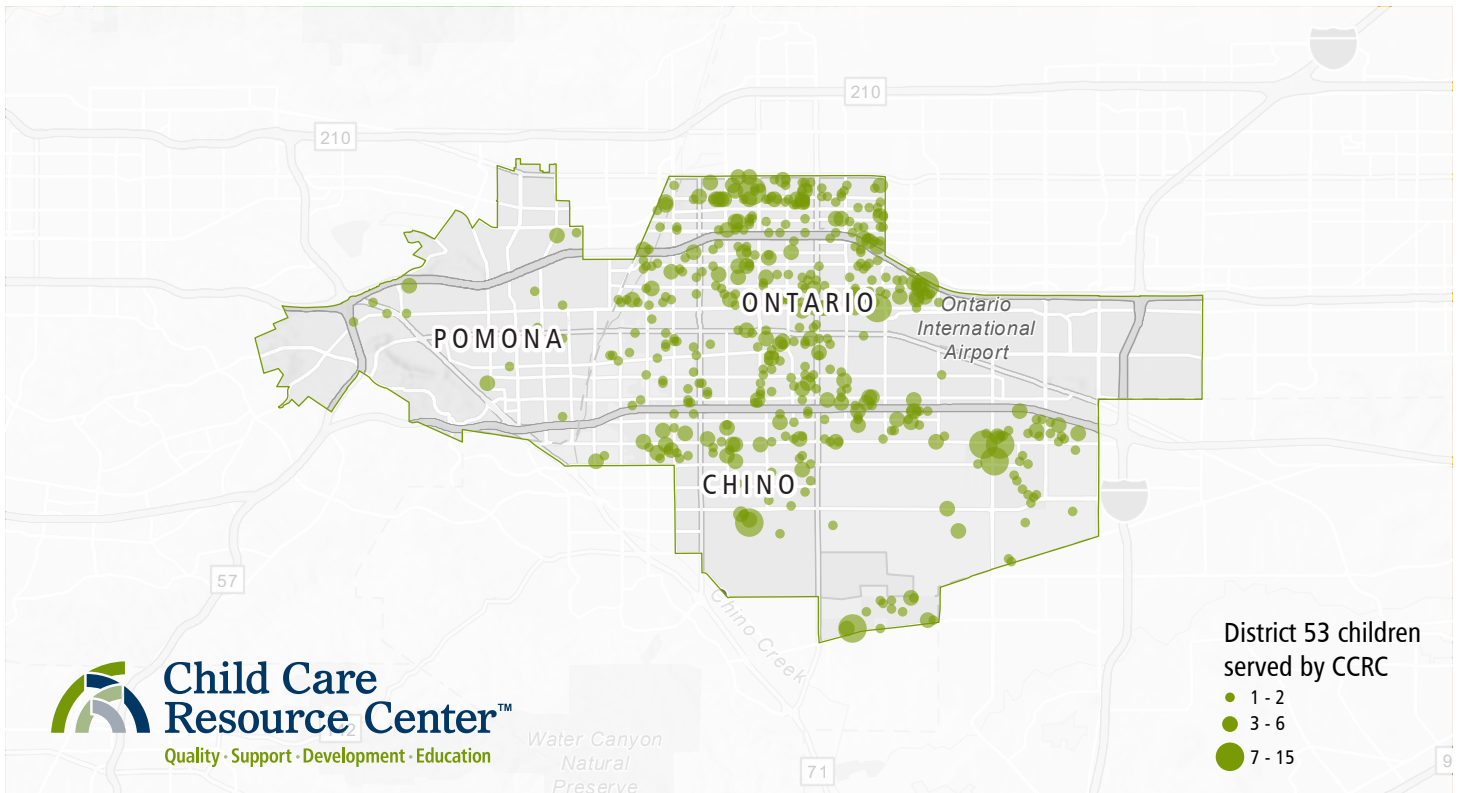
Do you know a parent in need of child care? A family of four earning \$7,900/mo may qualify. Scan the QR code for more information.



Scan the QR code to explore CCRC's legislative data dashboard including charts, maps, and more.



# Michelle Rodriguez · State Assemblymember · District 53



Assemblymember Michelle Rodriguez was elected in 2024 to represent California's 53rd Assembly District, covering communities in Pomona, Ontario, and Chino. The Assemblymember represents over 470,000 constituents. A lifelong resident of

the district, Rodriguez is a proud working-class mother and grandmother who has spent her life supporting her community. She has worked in education, healthcare, and public safety, including serving on the California Commission on Peace

Officer Standards and Training (POST). A survivor of gun violence and the mother of a deputy sheriff, Rodriguez is deeply committed to public safety, equity, and providing opportunities for working families.

**705**  
Families served by CCRC

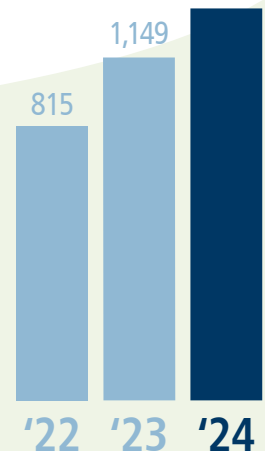
**\$23.1m**  
Total family earnings

**364**  
Providers receiving CCRC  
child care financial assistance

**\$9.3m**  
Invested in community  
child care providers

**1,207**  
children

**+48%**  
More District 53 children  
served by CCRC financial  
assistance, 2022 to 2024



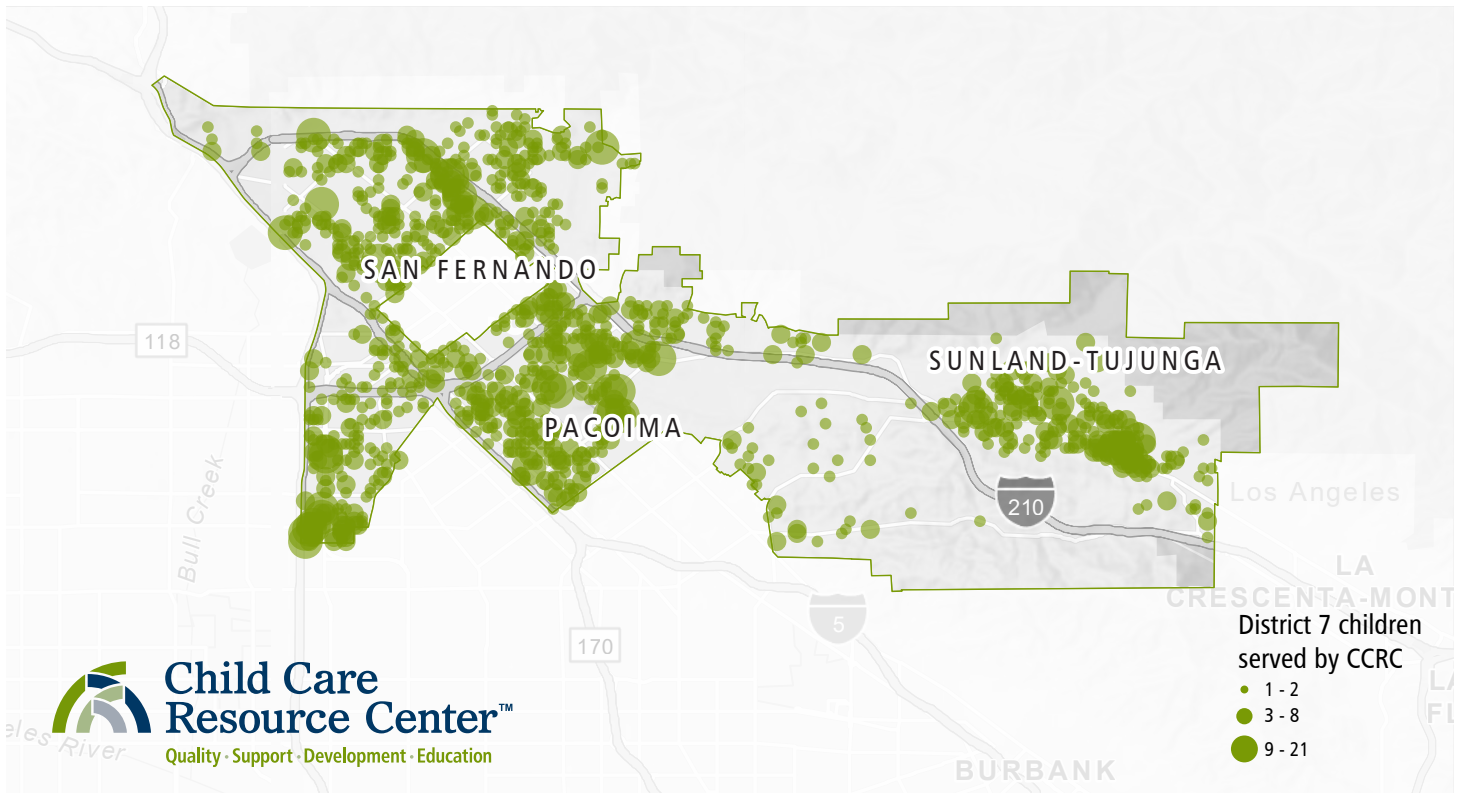
Do you know a parent in need of child care? A family of four earning \$7,900/mo may qualify. Scan the QR code for more information.



Scan the QR code to explore CCRC's legislative data dashboard including charts, maps, and more.



# Monica Rodriguez · L.A. City Council · District 7



Councilwoman Monica Rodriguez was elected in 2017 and represents the 7th District in the Los Angeles City Council which includes Sylmar, Mission Hills, Pacoima, Lakeview

Terrace, Sunland-Tujunga, North Hills, Shadow Hills, and La Tuna Canyon. Councilwoman Rodriguez represents 270,000 constituents. Prior to joining the City Council, she was the

founding President of Latinas Lead California and was a Commissioner on the Board of Public Works.

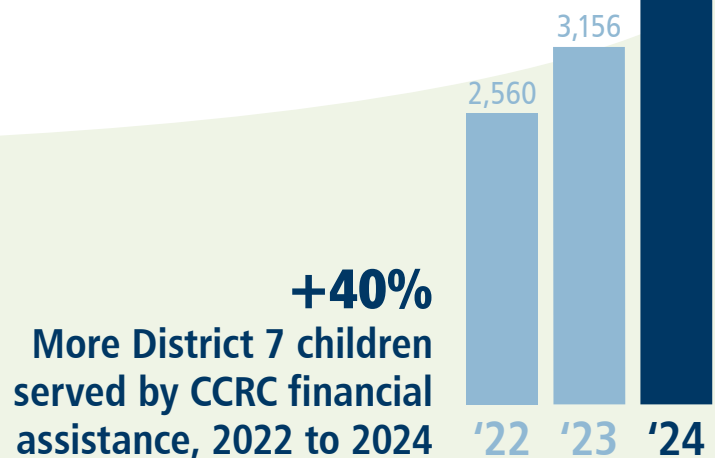
**2,079**  
Families served by CCRC

**\$72.1m**  
Total family earnings

**1,023**  
Providers receiving CCRC  
child care financial assistance

**\$34.3m**  
Invested in community  
child care providers

**3,586**  
children



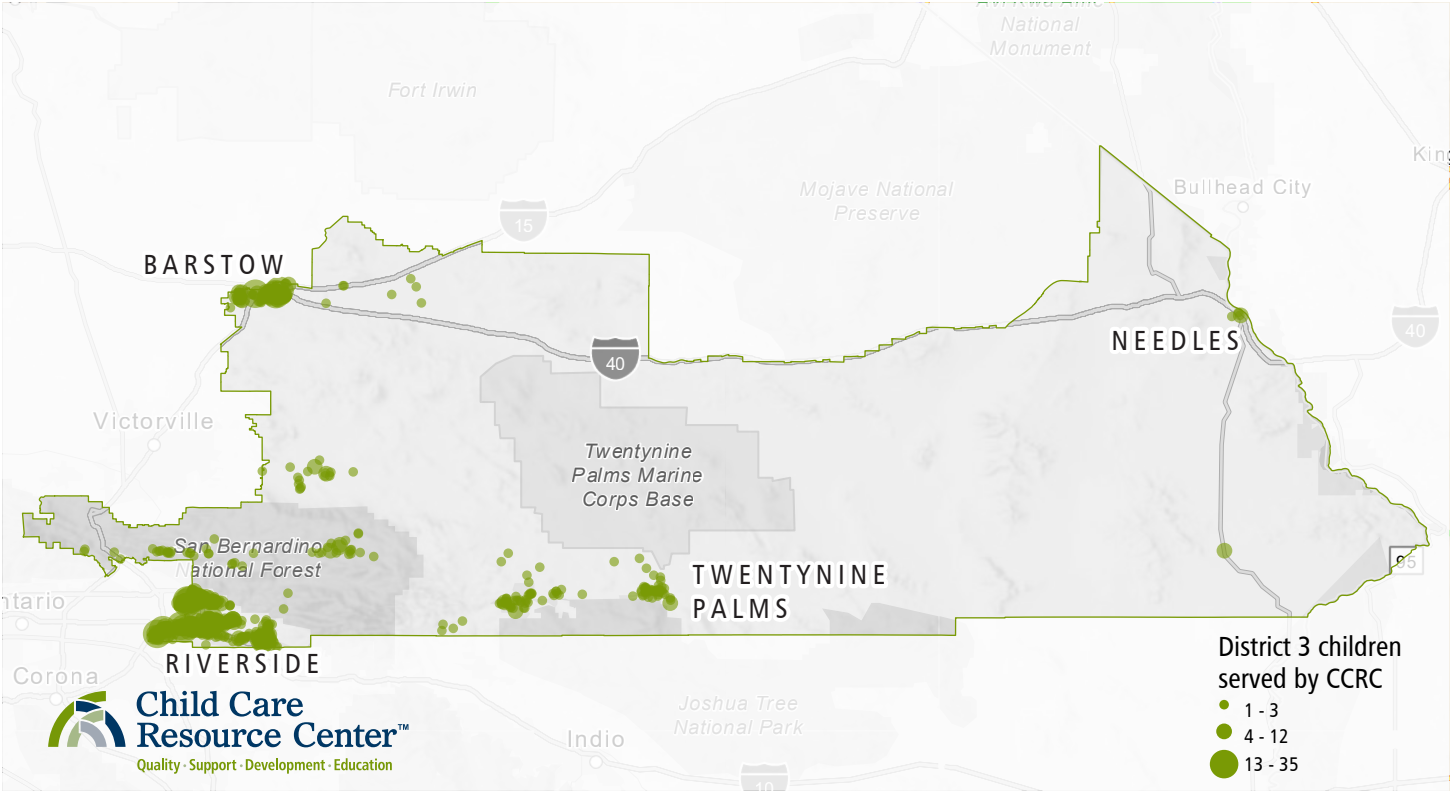
Do you know a parent in need of child care? A family of four earning \$7,900/mo may qualify. Scan the QR code for more information.



Scan the QR code to explore CCRC's legislative data dashboard including charts, maps, and more.



# Dawn Rowe · San Bernardino County Supervisor · District 3



Supervisor Dawn Rowe was appointed to the San Bernardino County Board of Supervisors in 2018 and served her first full term in 2020. Supervisor Rowe represents the Third District, which spans nearly 10,000

square miles, including rural areas such as Joshua Tree and the High Desert. Supervisor Rowe represents over 410,000 constituents. Supervisor Rowe is a strong advocate for public safety and rural communities and

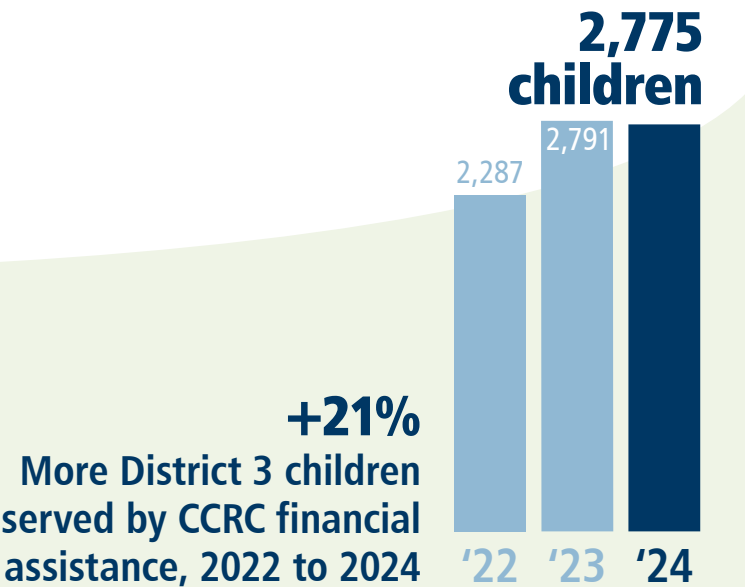
served as Chair of the Board and held leadership roles in the San Bernardino County Transportation Authority. Prior to her time on the Board, Rowe served on the Yucca Valley Town Council.

**1,506**  
Families served by CCRC

**\$48.8m**  
Total family earnings

**726**  
Providers receiving CCRC  
child care financial assistance

**\$23.7m**  
Invested in community  
child care providers



Do you know a parent in need of child care? A family of four earning \$7,900/mo may qualify. Scan the QR code for more information.

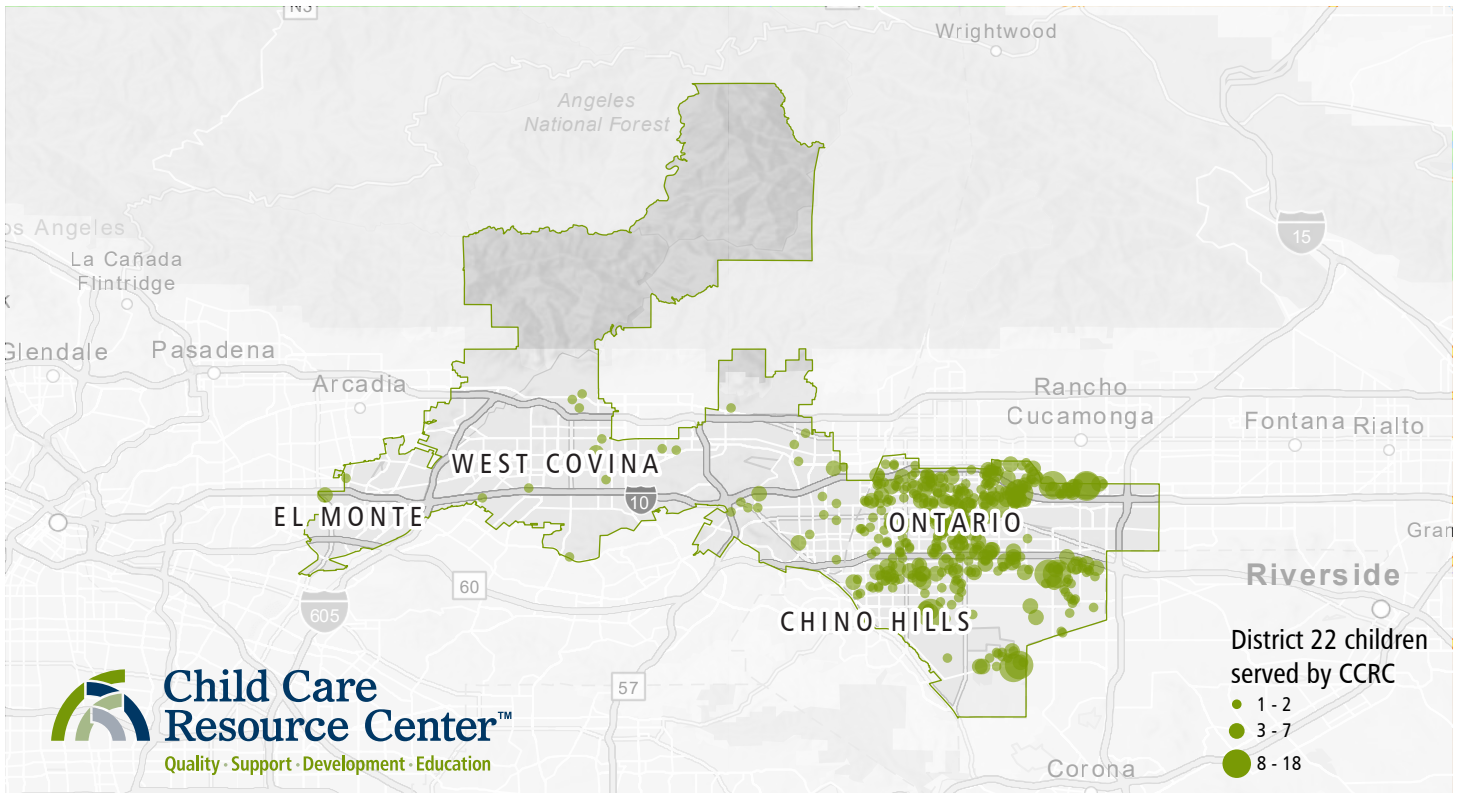


Scan the QR code to explore CCRC's legislative data dashboard including charts, maps, and more.





# Susan Rubio · State Senator · District 22



Senator Susan Rubio was elected in 2018 and represents the 22nd District in California State Senate, which includes Baldwin Park, Pomona, and West Covina, encompassing over one million constituents. Senator Rubio is a

passionate advocate for survivors of domestic violence, affordable housing, and educational reform. In the State Senate, she continues to work on policies that support vulnerable populations by enhancing legal

protections for victims and addressing housing affordability challenges.

**695**

Families served by CCRC

**\$22.7m**

Total family earnings

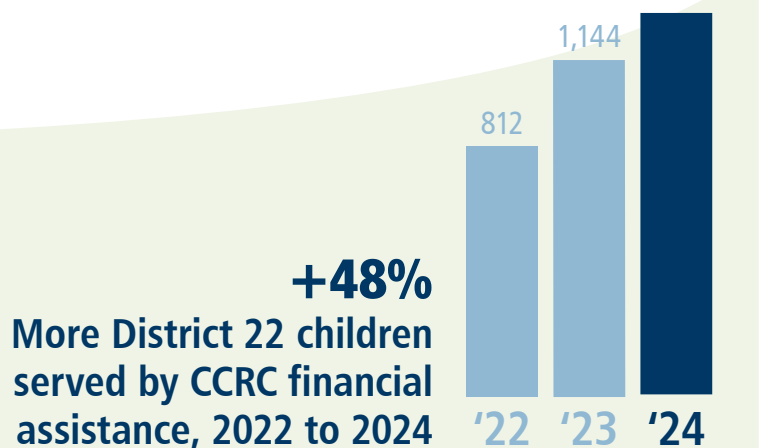
**417**

Providers receiving CCRC child care financial assistance

**\$10m**

Invested in community child care providers

**1,204 children**



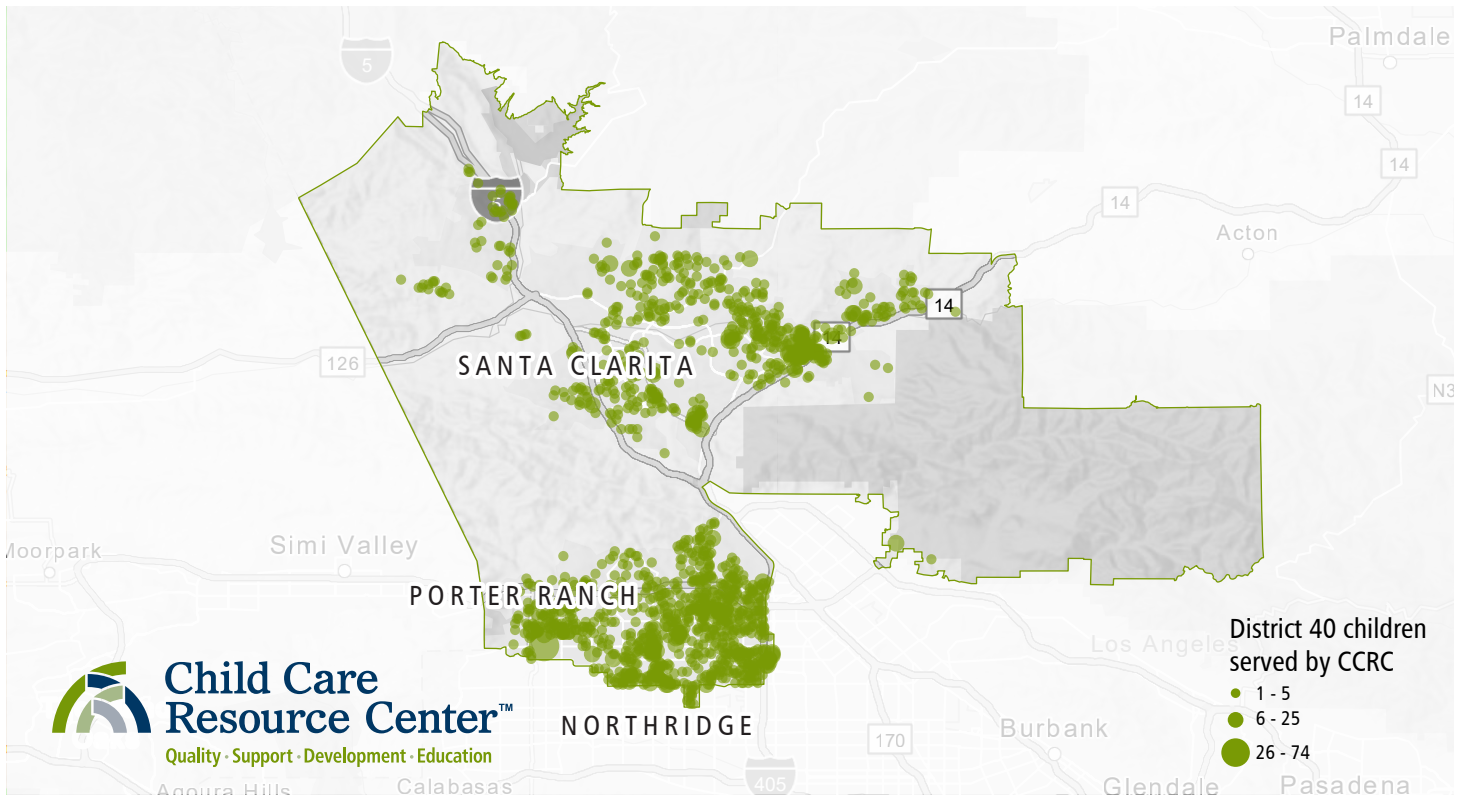
Do you know a parent in need of child care? A family of four earning \$7,900/mo may qualify. Scan the QR code for more information.



Scan the QR code to explore CCRC's legislative data dashboard including charts, maps, and more.



# Pilar Schiavo · State Assemblymember · District 40



Assemblymember Pilar Schiavo was elected in 2022 and represents the 40th District in the California State Assembly, which includes Chatsworth, Northridge, Granada Hills, North Hills, Porter Ranch, the Santa Clarita Valley, Newhall, and

Castaic. Assemblymember Schiavo represents 510,000 constituents. Prior to joining the State Legislature, she was a Small Business Owner and a Nurse Advocate who worked in the labor movement for more than 20 years.

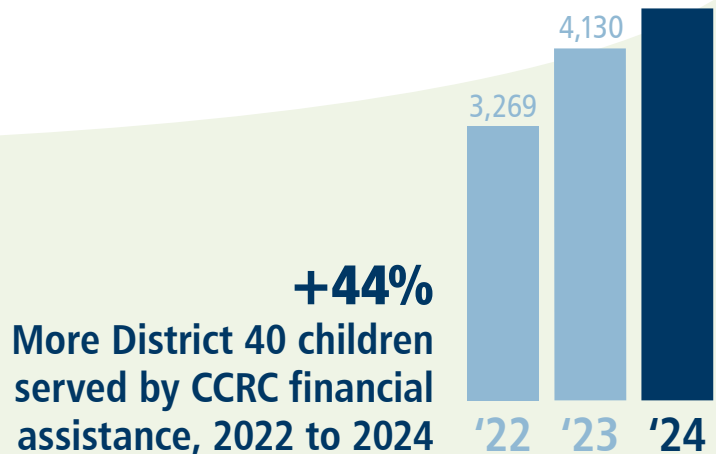
**2,813**  
Families served by CCRC

**\$91.6m**  
Total family earnings

**1,140**  
Providers receiving CCRC  
child care financial assistance

**\$58.5m**  
Invested in community  
child care providers

**4,699**  
children



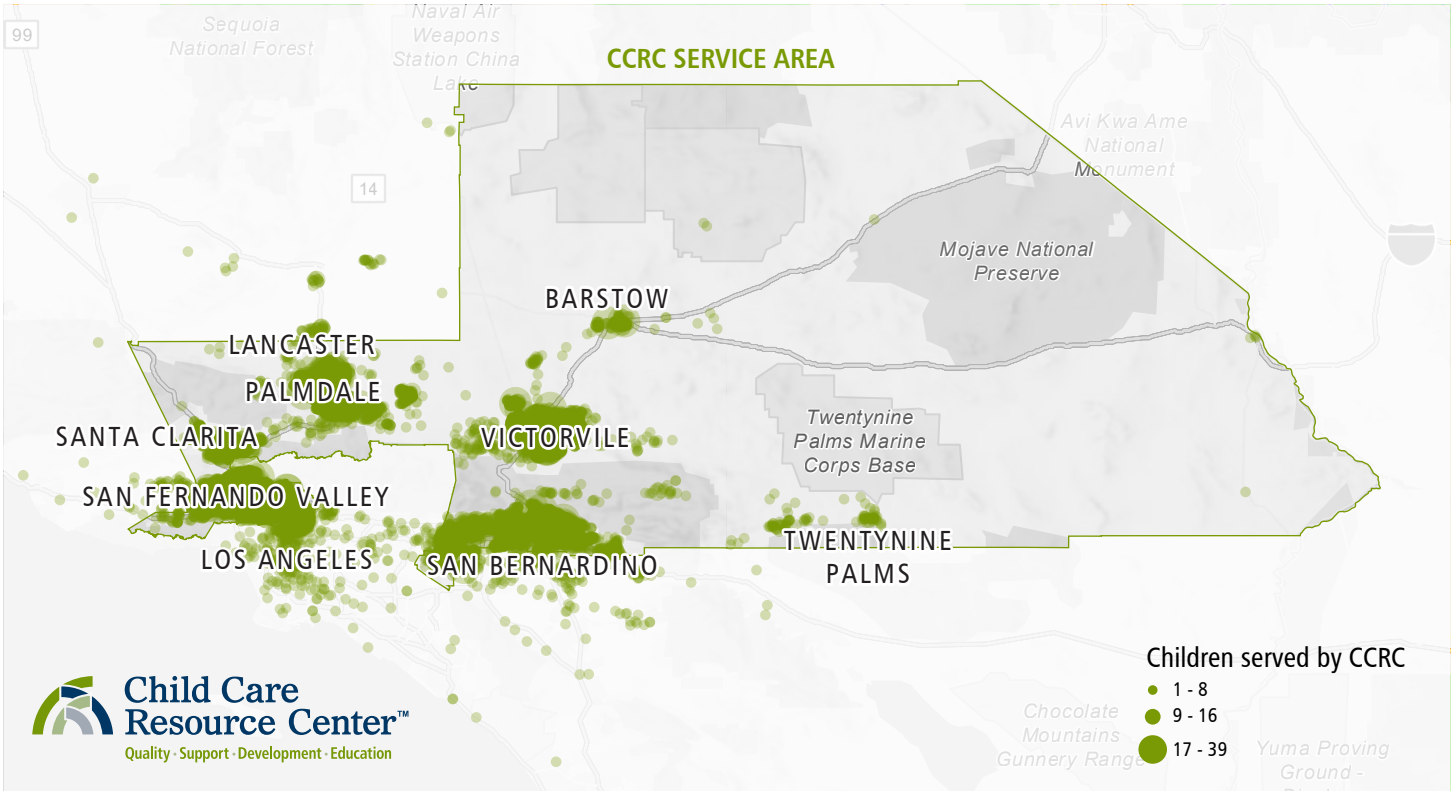
Do you know a parent in need of child care? A family of four earning \$7,900/mo may qualify. Scan the QR code for more information.



Scan the QR code to explore CCRC's legislative data dashboard including charts, maps, and more.



# Adam Schiff · Senator, State of California



U.S. Senator Adam Schiff was elected in 2024 to the United States Senate to represent the State of California. He began his career in public service in 1996 as the youngest California State Senator. In 2000, he was elected to

the U.S. House of Representatives. Senator Schiff is a champion to California's local priorities for working families, the middle class, small businesses, Medi-Cal expansion, environment, and clean energy.

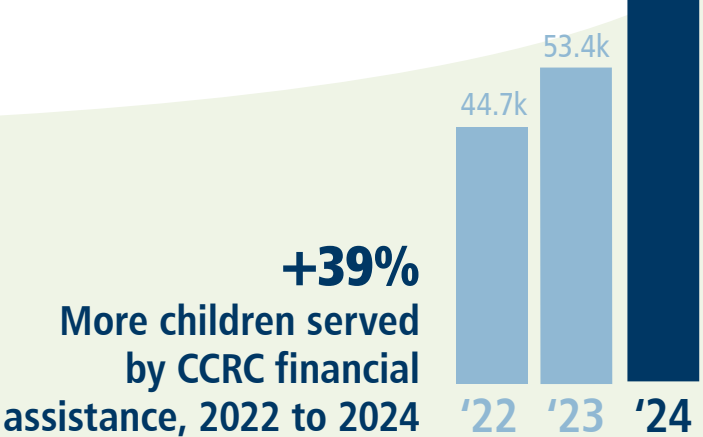
**37,908**  
Families served by CCRC

**\$1.3b**  
Total family earnings

**18,139**  
Providers receiving CCRC  
child care financial assistance

**\$642.8m**  
Invested in community  
child care providers

**66,308**  
children



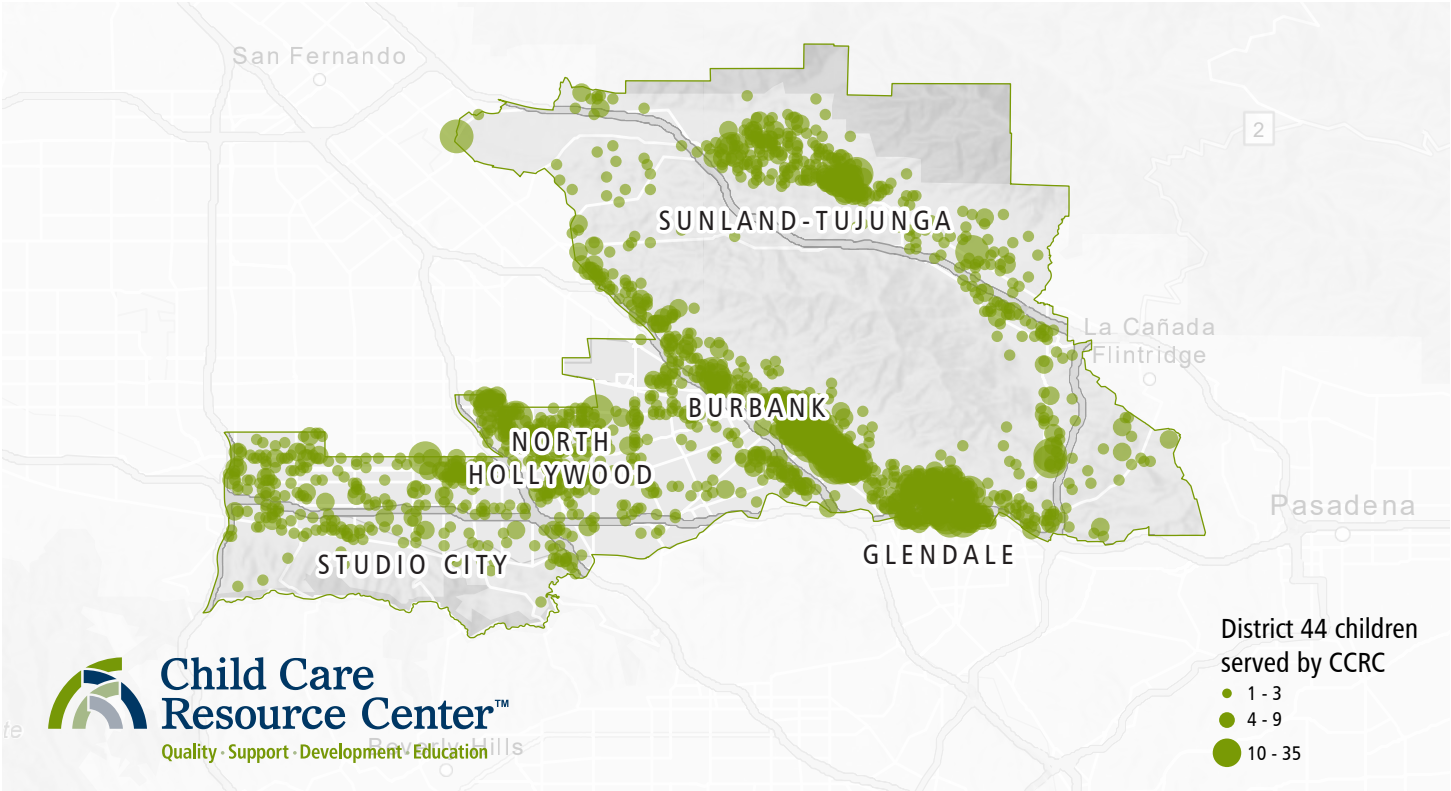
Do you know a parent in need of child care? A family of four earning \$7,900/mo may qualify. Scan the QR code for more information.



Scan the QR code to explore CCRC's legislative data dashboard including charts, maps, and more.



# Nick Schultz · State Assemblymember · District 44



Assemblymember Nick Schultz was elected in 2024 and represents the 44th District in the California State Assembly, which includes the cities of Burbank and Glendale, alongside the Los Angeles neighborhoods of Sunland Tujunga, North Hollywood,

Sherman Oaks, Studio City, and Valley Village. Assemblymember Schultz represents 500,000 constituents. Prior to joining the State Legislature, he was elected to the Burbank City Council in 2020 and became Mayor in 2023.

**3,615**  
Families served by CCRC

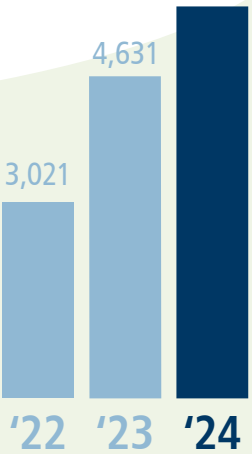
**\$88.9m**  
Total family earnings

**1,156**  
Providers receiving CCRC  
child care financial assistance

**\$67.2m**  
Invested in community  
child care providers

**5,848**  
children

**+94%**  
More District 44 children  
served by CCRC financial  
assistance, 2022 to 2024



Do you know a parent in need of child care? A family of four earning \$7,900/mo may qualify. Scan the QR code for more information.

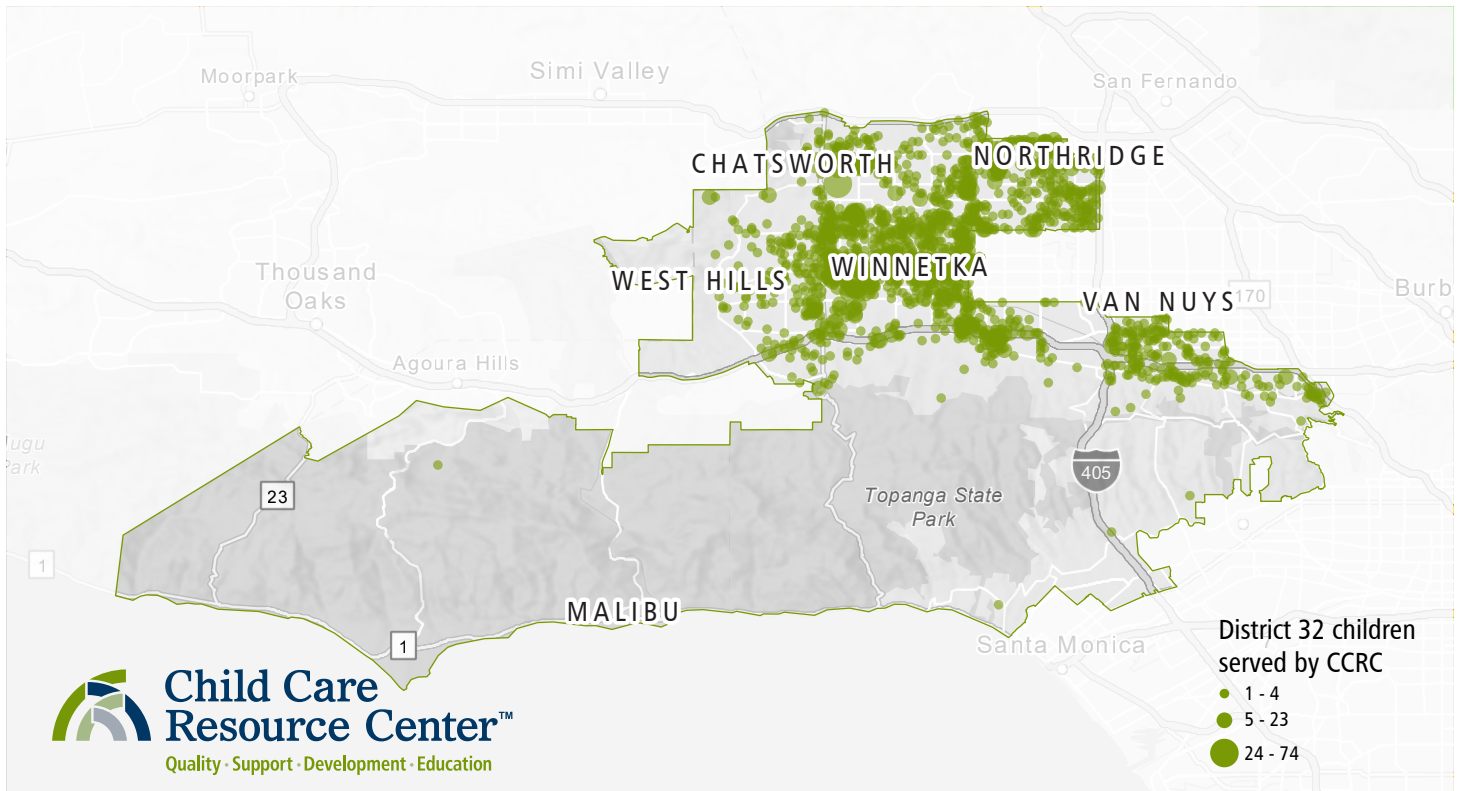


Scan the QR code to explore CCRC's legislative data dashboard including charts, maps, and more.





# Brad Sherman · Congressman · District 32



Congressman Brad Sherman was elected in 1997 and represents the 32nd District in the U.S. House of Representatives, which includes Canoga Park, Chatsworth, Encino,

North Hills, Northridge, Reseda, Sherman Oaks, Studio City, Tarzana, West Hills, Winnetka, and Woodland Hills. Congressman Sherman represents 760,000 constituents.

Prior to joining Congress, he served on the California State Board of Equalization from 1991 to 1996.

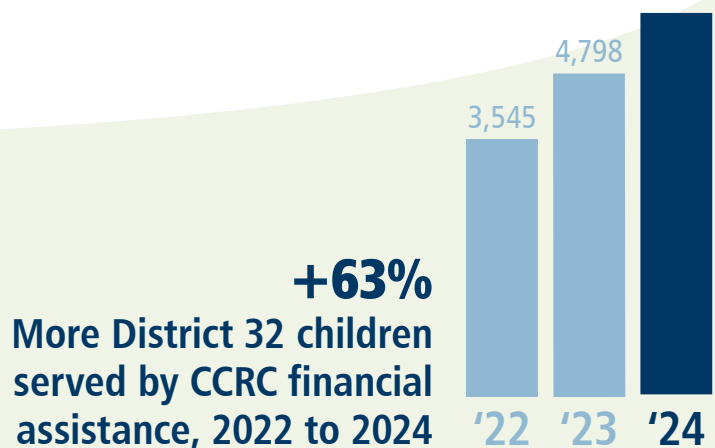
**3,718**  
Families served by CCRC

**\$128.4m**  
Total family earnings

**1,311**  
Providers receiving CCRC  
child care financial assistance

**\$64m**  
Invested in community  
child care providers

**5,761**  
children



Do you know a parent in need of child care? A family of four earning \$7,900/mo may qualify. Scan the QR code for more information.

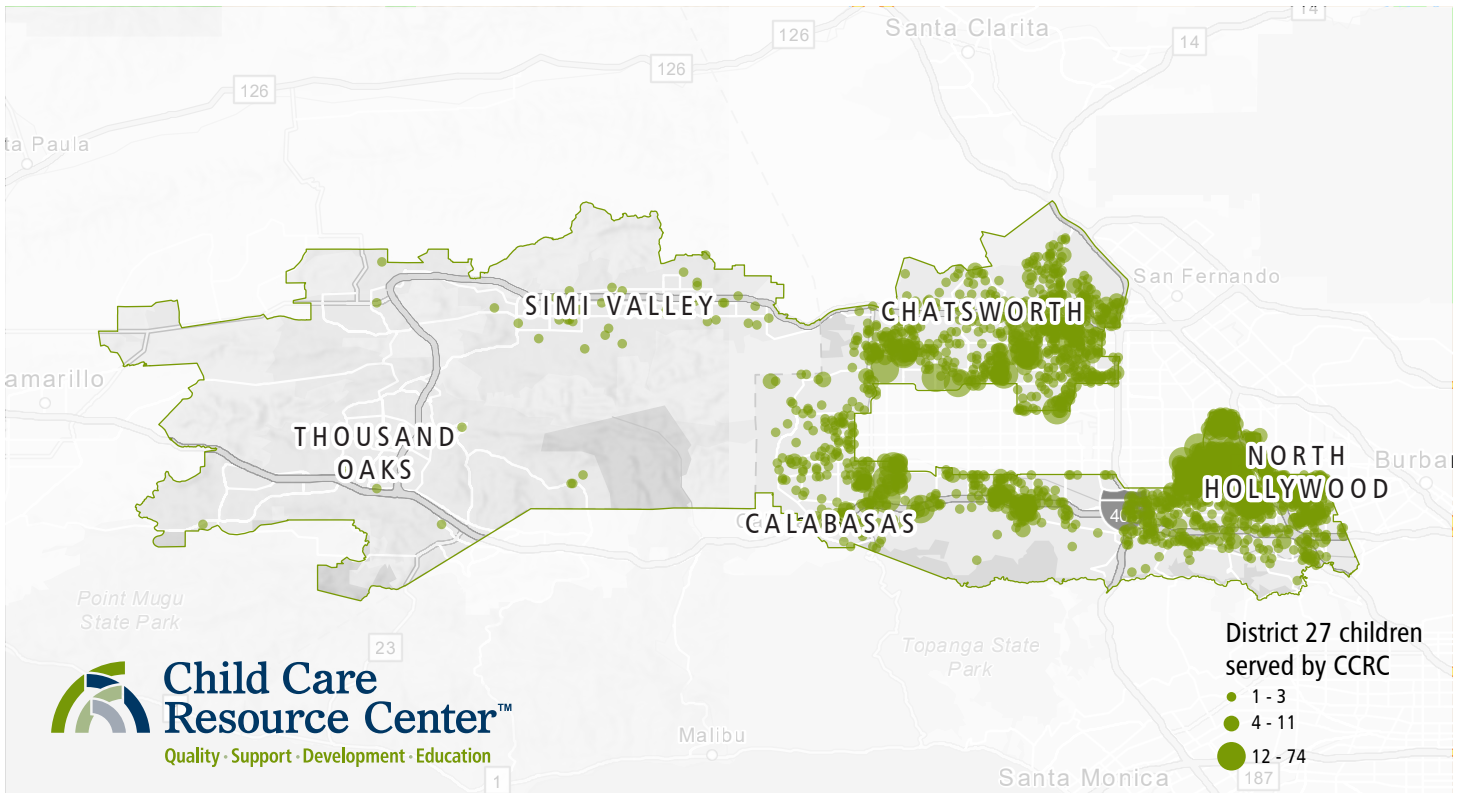


Scan the QR code to explore CCRC's legislative data dashboard including charts, maps, and more.





# Henry Stern · State Senator · District 27



Senator Henry Stern was elected in 2016 and represents the 27th District in the California State Senate, which includes Agoura Hills, Calabasas, Hidden Hills, part of Santa Clarita and

the following Los Angeles communities: Canoga Park, Chatsworth, Encino, Porter Ranch, Reseda, Lake Balboa, Tarzana, West Hills, Winnetka, and Woodland Hills. Senator Stern

represents 990,000 constituents. Prior to joining the State Legislature, he was an environmental attorney and an educator.

**4,161**  
Families served by CCRC

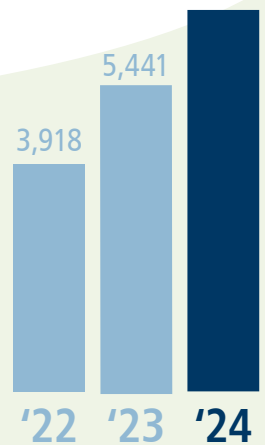
**\$124.5m**  
Total family earnings

**1,539**  
Providers receiving CCRC  
child care financial assistance

**\$72.4m**  
Invested in community  
child care providers

**6,514**  
children

**+66%**  
More District 27 children  
served by CCRC financial  
assistance, 2022 to 2024



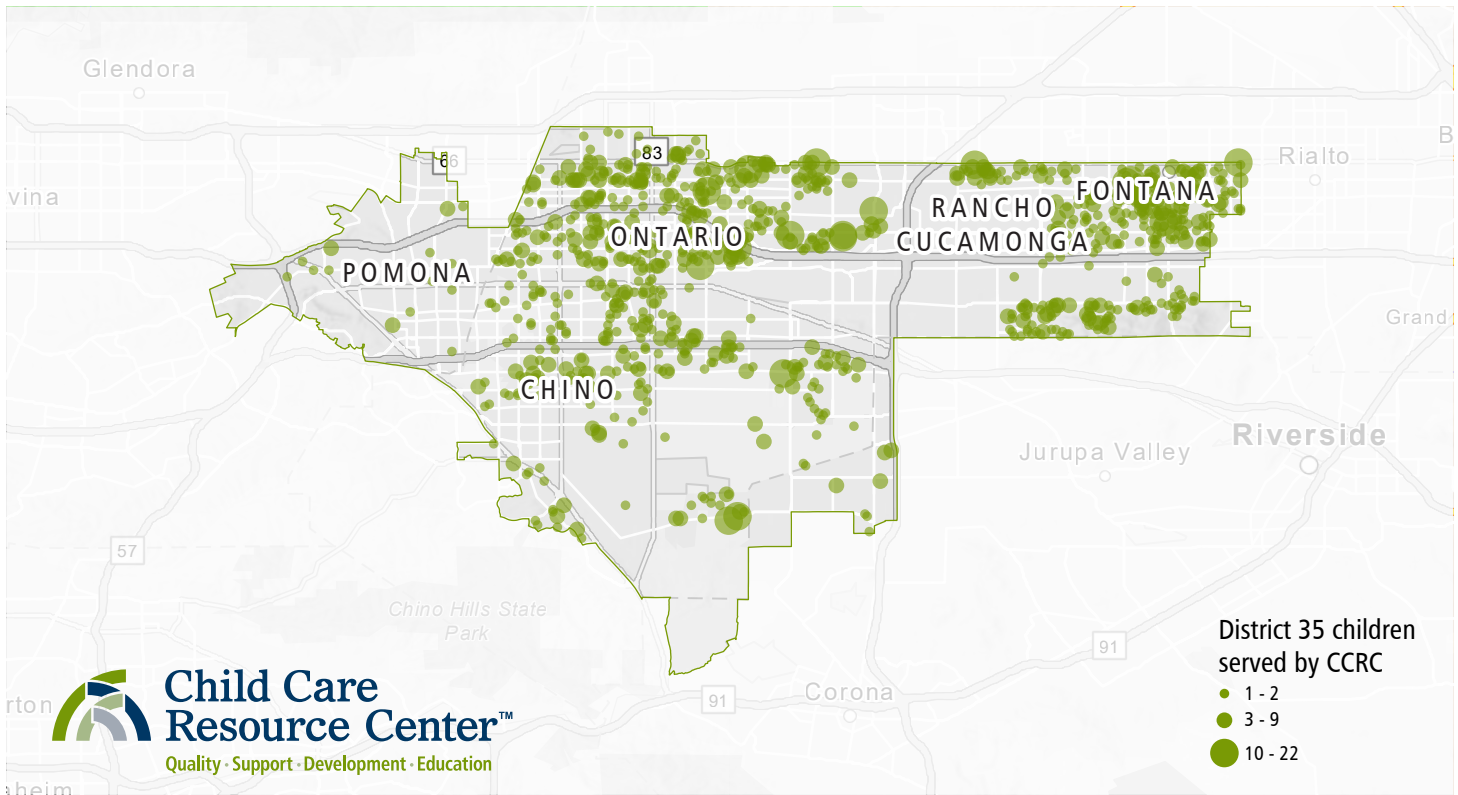
Do you know a parent in need of child care? A family of four earning \$7,900/mo may qualify. Scan the QR code for more information.



Scan the QR code to explore CCRC's legislative data dashboard including charts, maps, and more.



# Norma Torres · Congresswoman · District 35



Congresswoman Norma Torres was elected in 2014 and represents the 35th Congressional District, which includes the cities of Pomona, Ontario, and Chino, as well as

neighborhoods in the surrounding San Bernardino County area. Congresswoman Torres represents over 750,000 constituents. Prior to her tenure in Congress, she served in

the California State Assembly and worked on policies addressing public safety, education, and affordable housing.

**1,544**

Families served by CCRC

**\$50.5m**

Total family earnings

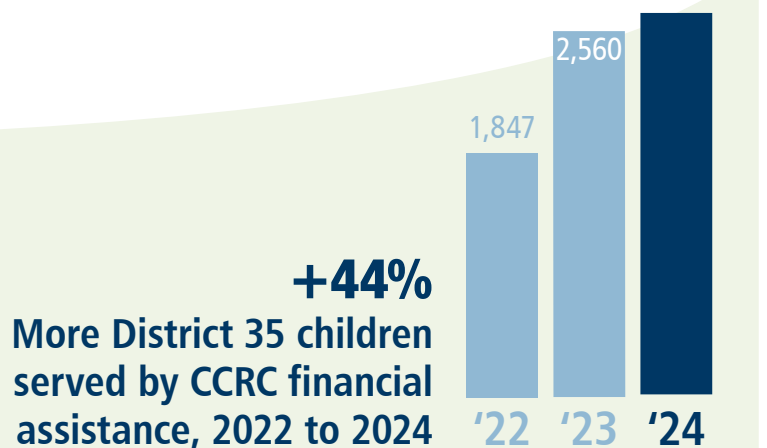
**753**

Providers receiving CCRC child care financial assistance

**\$23.4m**

Invested in community child care providers

**2,655 children**



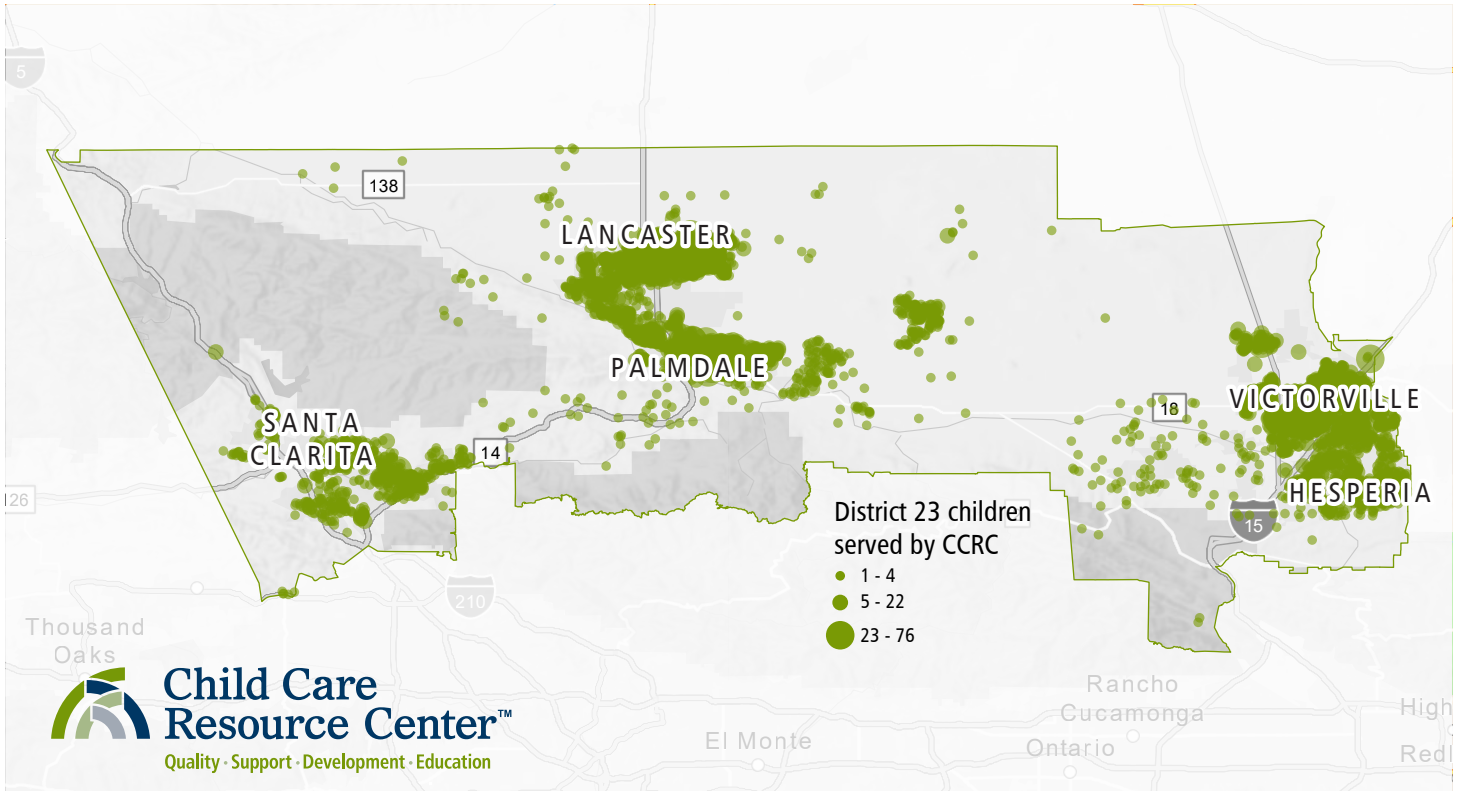
Do you know a parent in need of child care? A family of four earning \$7,900/mo may qualify. Scan the QR code for more information.



Scan the QR code to explore CCRC's legislative data dashboard including charts, maps, and more.



# Suzette Martinez Valladares · State Senator · District 23



Senator Suzette Martinez Valladares was elected in 2024 and represents the 23rd District in the California State Senate, which includes Lancaster, Palmdale, and Santa Clarita Valley in Los Angeles County, as well as the

southeast portions of Victorville and Hesperia in San Bernardino County. Senator Valladares represents over one million constituents. Prior to joining the State Legislature, she represented the 38th district in the

California State Assembly from 2020-2022.

**14,070**

Families served by CCRC

**\$555.4m**

Total family earnings

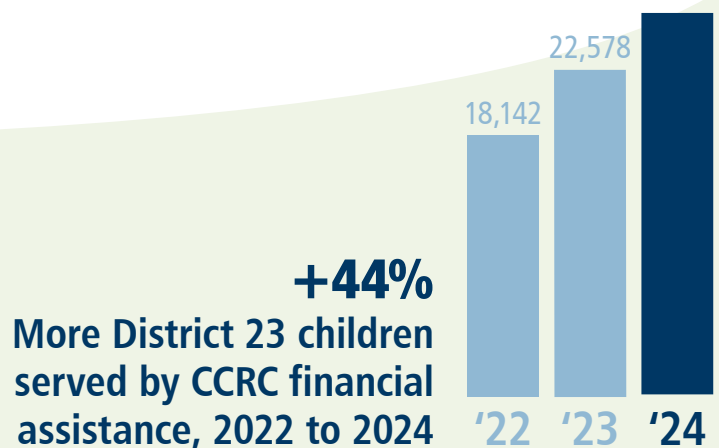
**7,433**

Providers receiving CCRC  
child care financial assistance

**\$222.7m**

Invested in community  
child care providers

**26,065**  
children



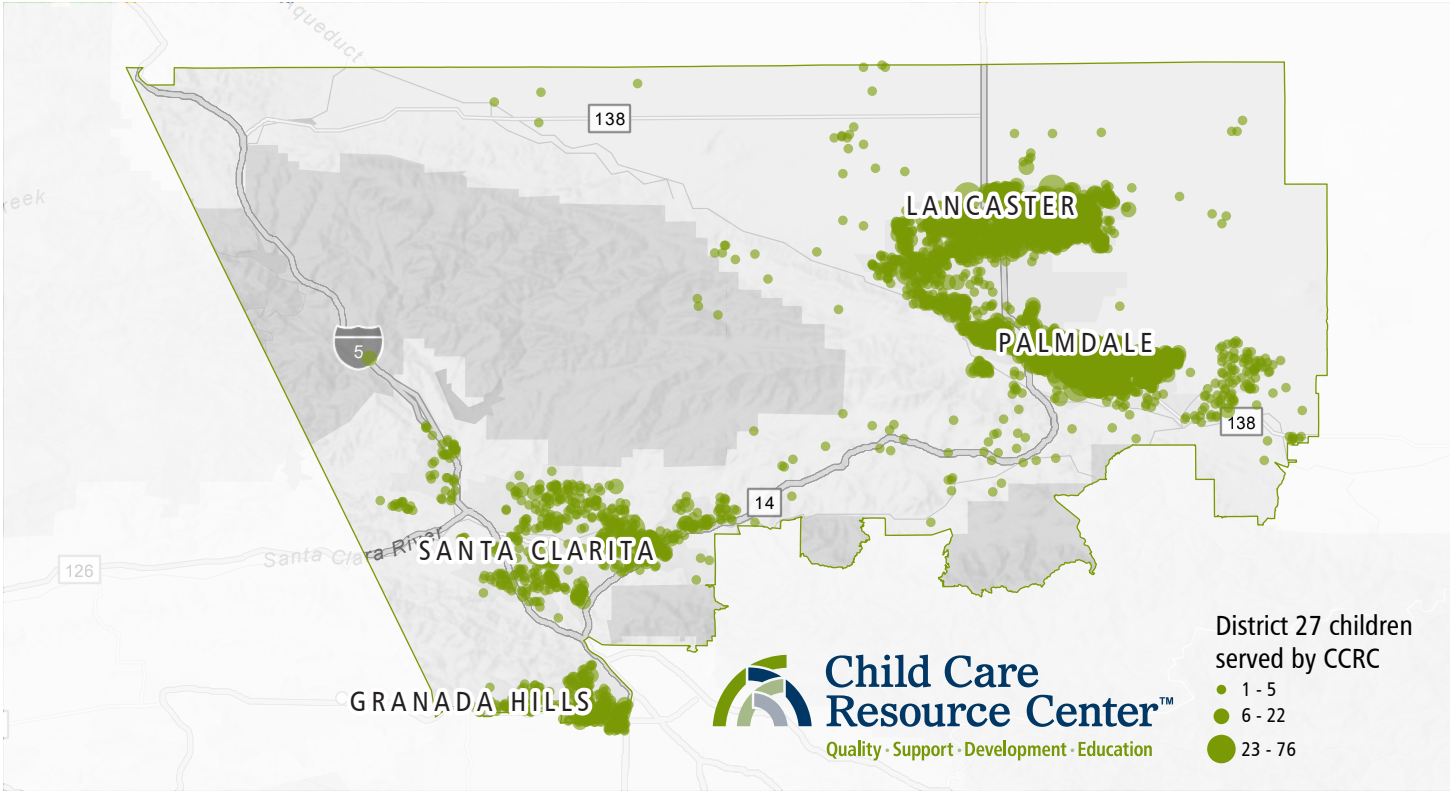
Do you know a parent in need of child care? A family of four earning \$7,900/mo may qualify. Scan the QR code for more information.



Scan the QR code to explore CCRC's legislative data dashboard including charts, maps, and more.



# George Whitesides · Congressman · District 27



Congressman George Whitesides was elected in 2025 and represents the 27th Congressional District, which includes Santa Clarita, Palmdale, Lancaster, Granada Hills, Newhall, Porter Ranch, and Valencia.

Congressman Whitesides represents 740,000 constituents. Before joining Congress, he served as NASA Chief of Staff and co-founded an organization that works to solve the megafire crisis.

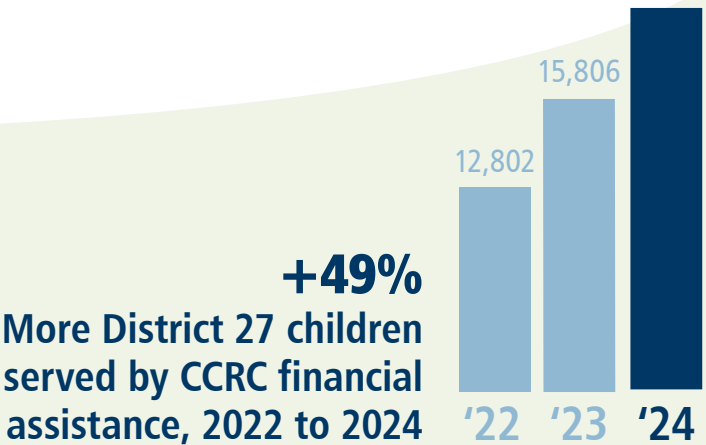
**10,554**  
Families served by CCRC

**\$451.6m**  
Total family earnings

**5,540**  
Providers receiving CCRC  
child care financial assistance

**\$167.1m**  
Invested in community  
child care providers

**19,124**  
children



Do you know a parent in need of child care? A family of four earning \$7,900/mo may qualify. Scan the QR code for more information.



Scan the QR code to explore CCRC's legislative data dashboard including charts, maps, and more.







# CCRC's Service Area

CCRC serves over 66,000 children and 18,000 child care providers across Southern California

CCRC cultivates child, family, and community well-being to over 100,000 children, families, and child care providers across our 22,500-square-mile service area of Northern Los Angeles and San Bernardino Counties. With a team of over 1,200 professional staff, we offer a wide range of programs for families and child care providers, host fundraising activities, distribute essential items in times of need, and maintain a base of support to ensure better outcomes for all Californians in the future.

